

MONUMENT 433

CERTIFICATE OF LOCATION OF FOUND MONUMENT

Center of Section 16, Township 29 North, Range 22 West, County of Ramsey, State of Minnesota.

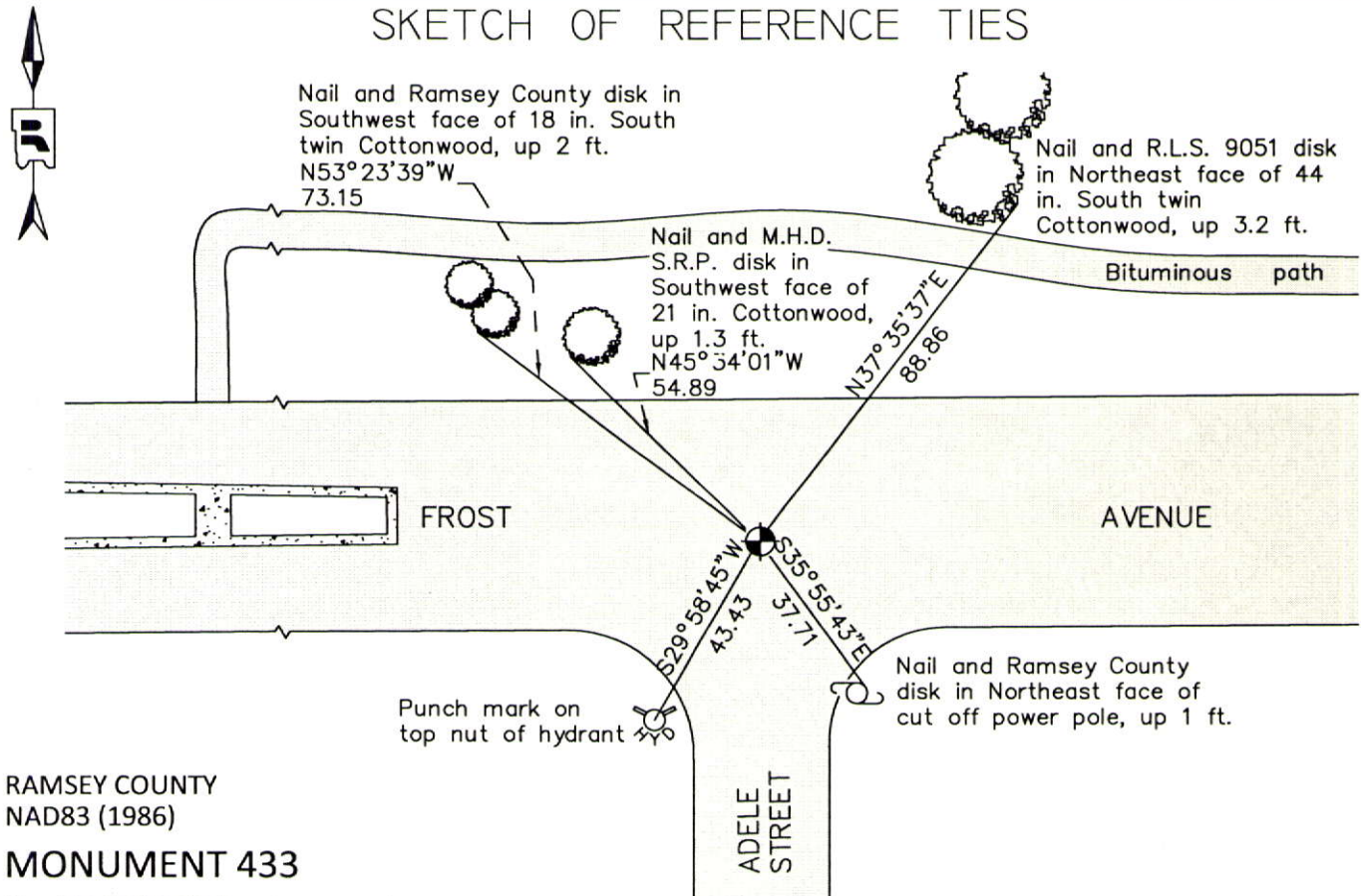
At the corner location shown on the sketch

On July 20, 2012 found a "Ramsey County" cast iron monument within a cast iron manhole assembly.

left monument as found raised/lowered monument removed monument (explain)

On _____ placed a _____

SKETCH OF REFERENCE TIES



RAMSEY COUNTY
NAD83 (1986)

MONUMENT 433

X= 584700.184 (Easting)
Y= 176052.862 (Northing)

ALL DISTANCES ARE SHOWN IN U.S. SURVEY FEET.
BEARINGS ARE FOR TIE REFERENCE PURPOSES ONLY.

Statements of evidence relative to this corner are on the following page.

I hereby certify that this document was prepared by me or under my direct supervision and that I am a duly Licensed Land Surveyor under the laws of the State of Minnesota.

Daniel D. Baar 12-14-14
Date

Daniel D. Baar
Minnesota License No. 45816

- County Surveyor Land Surveyor
 Deputy County Surveyor

OFFICE OF COUNTY SURVEYOR
County of Ramsey

I hereby certify that this document was filed in the County Surveyor's office this 14th day of December, 20 14.

Craig W. Hinzman
Craig W. Hinzman, L.S.
Ramsey County Surveyor

MONUMENT 433

Center of Section 16, Township 29 North, Range 22 West

Fixed the Center of Section by Intersection and set monument, October 17, 1900.

Checked monument, July, 1939.

Checked steel plate, June, 1967.

Found a 4 in. by 4-1/2 in. steel plate in concrete down 0.2 ft. and tied, September 4, 1974.

Set a cast iron cap monument over steel plate, June 1, 1976.

Monument destroyed by street construction, 1980-81.

Set position to replace monument, May, 1982.

Set a 20 in. cast iron monument, 1982.

Lowered monument 15 in. for Construction Department; contractor to set 12 in. P.V.C. pipe and cast iron manhole assembly over monument, October 2, 1997.

Tied monument, November 6, 2002.

Retied monument, August 29, 2007.

Offset monument for removal during road reconstruction, June 27, 2011.

Monument was not disturbed by construction, May 5, 2012.

Checked condition of cast iron monument within a cast iron manhole assembly and ties, July 20, 2012.