

# MONUMENT 432

## CERTIFICATE OF LOCATION OF GOVERNMENT CORNER

East Quarter Corner of Section 17, Township 29 North, Range 22 West, County of Ramsey, State of Minnesota.

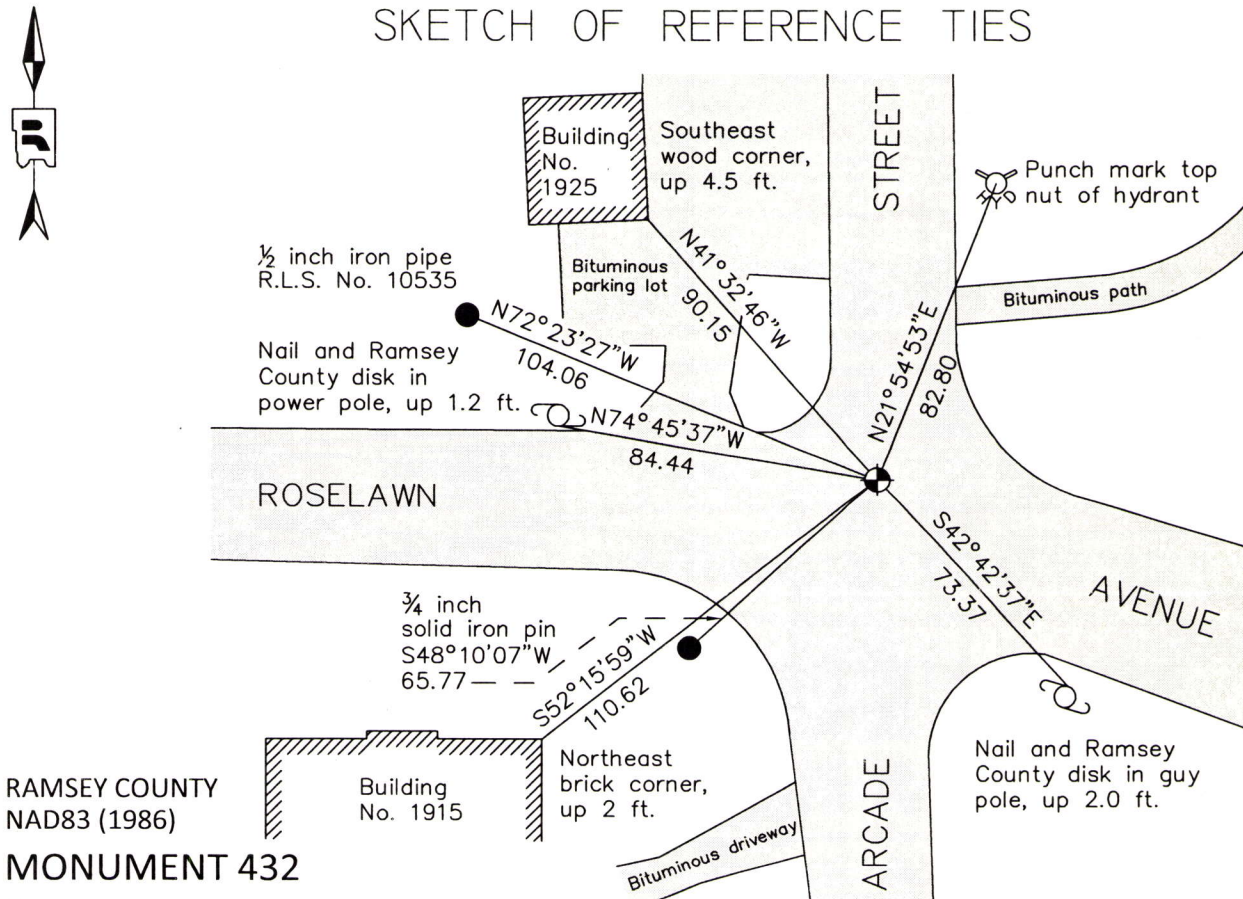
At the corner location shown on the sketch

On August 22, 2012 found a cast iron monument, top unreadable, flush in bituminous road.

left monument as found       raised/lowered monument       removed monument (explain)

On September 7, 2012 placed a set a 20 inch cast iron monument within a cast iron manhole assembly.

### SKETCH OF REFERENCE TIES



RAMSEY COUNTY  
NAD83 (1986)

### MONUMENT 432

X= 582055.435 (Easting)  
Y= 176031.809 (Northing)

ALL DISTANCES ARE SHOWN IN U.S. SURVEY FEET.  
BEARINGS ARE FOR TIE REFERENCE PURPOSES ONLY.

Statements of evidence relative to this corner are on the following page.

I hereby certify that this document was prepared by me or under my direct supervision and that I am a duly Licensed Land Surveyor under the laws of the State of Minnesota.

Daniel D. Baar      12-12-14  
Daniel D. Baar      Date  
Minnesota License No. 45816

County Surveyor       Land Surveyor  
 Deputy County Surveyor

OFFICE OF COUNTY SURVEYOR  
County of Ramsey

I hereby certify that this document was filed in the County Surveyor's office this 12th day of December, 20 14.

Craig W. Hinzman  
Craig W. Hinzman, L.S.  
Ramsey County Surveyor

# MONUMENT 432

East Quarter Corner of Section 17, Township 29 North, Range 22 West

North between Sections 16 and 17. Set Quarter Section post, W. Oak 12 S55°E 13, W. Oak 14 S38°W 18, November 29, 1847.

In establishing the Quarter Corner between Sections 16 and 17, fixed from some old notes, found stake, Government trees gone, December 12, 1898.

Set monument, November, 1899.

Found monument (boat spike) under concrete pavement and placed brass plug, January 31, 1939.

Checked monument, August, 1944.

New ties from State, October, 1952.

Set a cast iron monument, flush with road surface, which was evidenced by ties from Maplewood tie book and iron pipe in place, by Warren I. Forsberg, L.S. 4840, October 16, 1962.

Found a cast iron monument, flush and retied, September 6, 1974.

Removed monument, May, 1992.

Placed a 20 inch cast iron monument, October 13, 1992.

Tied monument, November 6, 2002.

Concrete maintenance around monument, August, 2006.

Retied monument, April 9, 2008.

Tie conditions checked; tied out monument for removal during road reconstruction project by the City of Maplewood, August 22, 2012.

Set a 20 inch cast iron monument within a cast iron manhole assembly, September 7, 2012.