

MONUMENT 430

CERTIFICATE OF LOCATION OF FOUND MONUMENT

East Quarter Corner of Section 18, Township 29 North, Range 22 West, County of Ramsey, State of Minnesota.

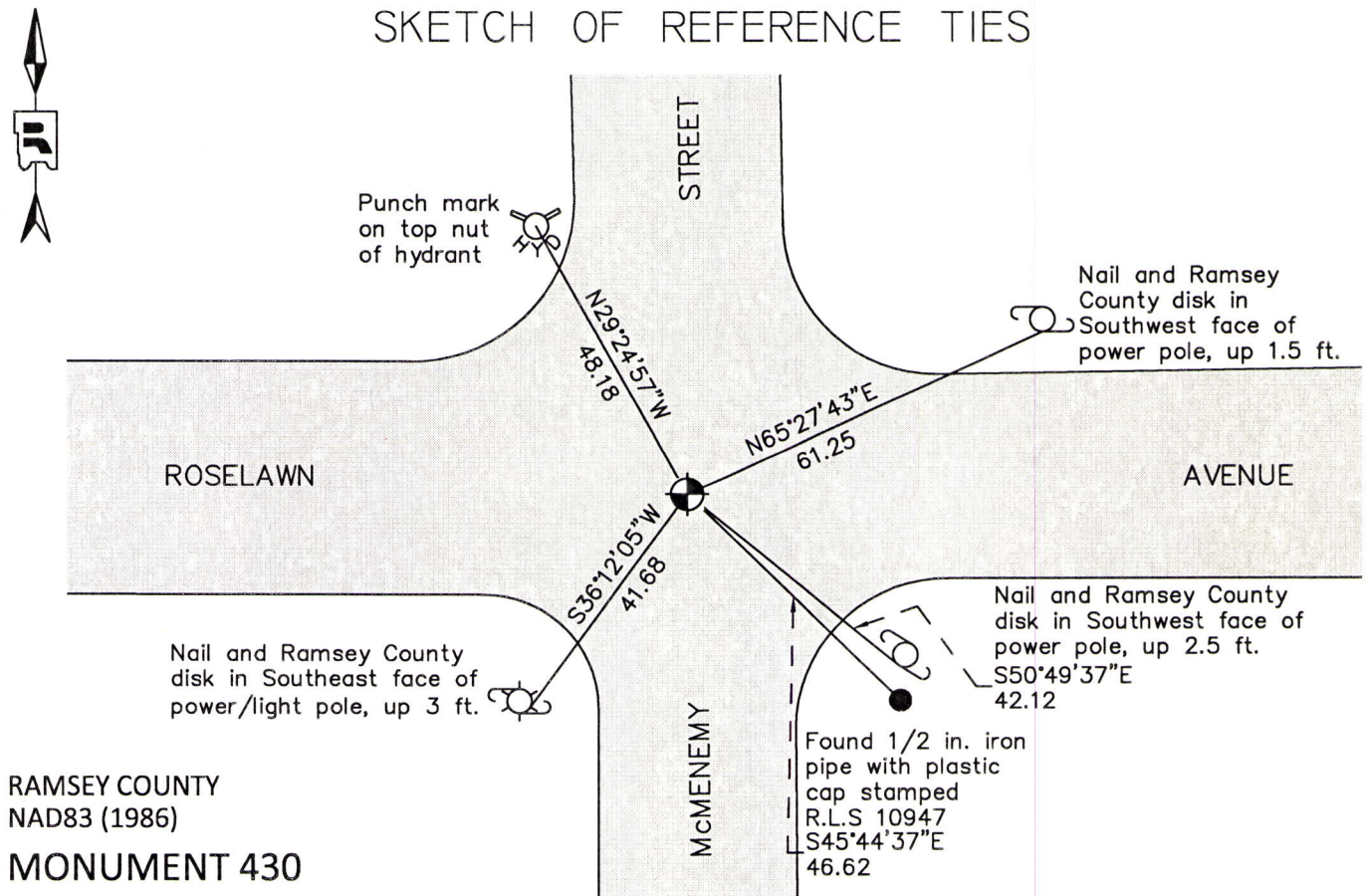
At the corner location shown on the sketch

On September 6, 2012 found a "Ramsey County" cast iron monument, flush in bituminous road.

left monument as found raised/lowered monument removed monument (explain)

On September 6, 2012 lowered "Ramsey County" cast iron monument, +/-4 in. , then placed a cast iron manhole assembly over top.

SKETCH OF REFERENCE TIES



RAMSEY COUNTY
NAD83 (1986)

MONUMENT 430

X= 576818.126 (Easting)
Y= 175954.498 (Northing)

ALL DISTANCES ARE SHOWN IN U.S. SURVEY FEET.
BEARINGS ARE FOR TIE REFERENCE PURPOSES ONLY.

Statements of evidence relative to this corner are on the following page.

I hereby certify that this document was prepared by me or under my direct supervision and that I am a duly Licensed Land Surveyor under the laws of the State of Minnesota.

Daniel D. Baar 11-19-14
Daniel D. Baar Date
Minnesota License No. 45816

County Surveyor Land Surveyor
 Deputy County Surveyor

OFFICE OF COUNTY SURVEYOR
County of Ramsey

I hereby certify that this document was filed in the County Surveyor's office this 19th day of November, 20 14.

Craig W. Hinzman
Craig W. Hinzman, L.S.
Ramsey County Surveyor

MONUMENT 430

East Quarter Corner of Section 18, Township 29 North, Range 22 West

Set 1/4 Section post, W. Oak 18 N60°W 160, "Do" (W. Oak) 14 S8-1/2°E 181, November 29, 1847.

In establishing the 1/4 Corner between Sections 17 and 18, fixed from some old notes, found stake; Government witness trees gone, December 12, 1898.

Set monument, November, 1899.

Raised monument, May, 1939.

Checked monument, August, 1944.

Found a cast iron monument flush and tied, September 18, 1974.

Removed cast iron monument, June 15, 1990.

Placed a 20 in. cast iron monument, October 26, 1990.

Removed cast iron monument for road maintenance, April, 1992.

Set a 20 in. cast iron monument, October 13, 1992.

Tied monument, July 8, 2002.

Retied monument, August 9, 2007.

Tied monument for removal during road reconstruction, August 22, 2012.

Removed "Ramsey County" 20 in. cast iron monument and found a 5/8 in. solid rod, down 26 in. below finished grade. Rod matched North and South position, and was 0.04 ft. East of position. Reset existing cast iron monument, down +/-4 in. at previous position. Left 5/8 in. rod in place. Placed a cast iron manhole assembly over cast iron monument; tied, September 6, 2012.