

MONUMENT 428

CERTIFICATE OF LOCATION OF GOVERNMENT CORNER

East Quarter Corner of Section 13, Township 29 North, Range 23 West, County of Ramsey, State of Minnesota.

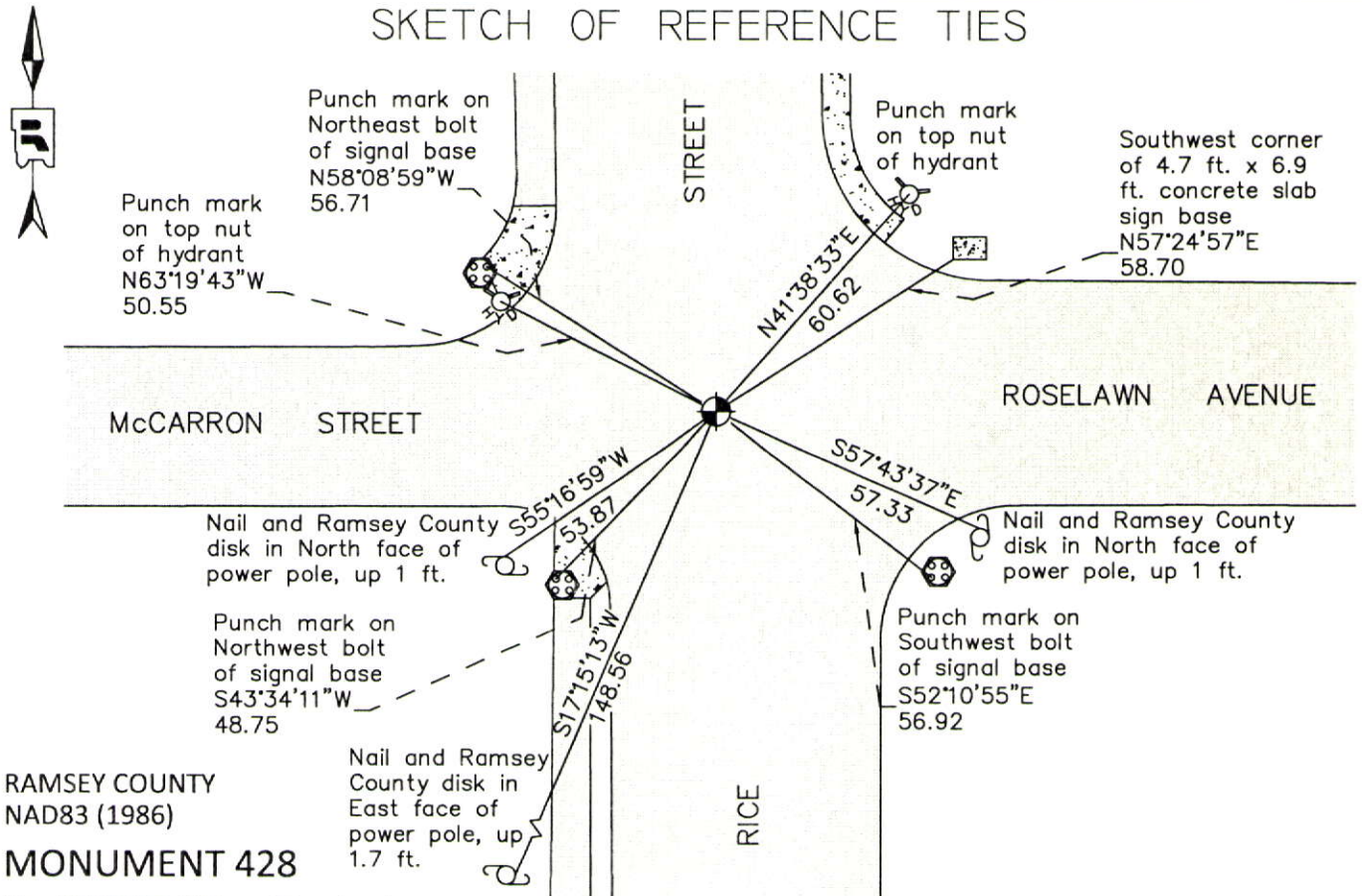
At the corner location shown on the sketch

On July 31, 2012 found a "Quarter Corner" cast iron monument, flush in bituminous road with concrete around it.

left monument as found raised/lowered monument removed monument (explain)

On _____ placed a _____

SKETCH OF REFERENCE TIES



RAMSEY COUNTY
NAD83 (1986)
MONUMENT 428

X= 571775.401 (Easting)
Y= 175953.604 (Northing)

ALL DISTANCES ARE SHOWN IN U.S. SURVEY FEET.
BEARINGS ARE FOR TIE REFERENCE PURPOSES ONLY.

Statements of evidence relative to this corner are on the following page.

I hereby certify that this document was prepared by me or under my direct supervision and that I am a duly Licensed Land Surveyor under the laws of the State of Minnesota.

Daniel D. Baar 12-30-14
Daniel D. Baar Date
Minnesota License No. 45816

- County Surveyor Land Surveyor
 Deputy County Surveyor

OFFICE OF COUNTY SURVEYOR
County of Ramsey

I hereby certify that this document was filed in the County Surveyor's office this 30th day of December, 20 14.

Craig W. Hinzman
Craig W. Hinzman, L.S.
Ramsey County Surveyor

MONUMENT 428

East Quarter Corner of Section 13, Township 29 North, Range 23 West

Set post at Quarter Corner, Br. Oak 7 S70°W 62, B. Oak 8 N48°E 74,
October 8, 1847.

The 1/4 Corner between Section 18, Township 29, Range 22, and Section 13,
Township 29, Range 23, was fixed from old Lot and Block Corners found in Wagner's
Addition; Government witness trees gone. Fixed Corner, tied it, and set monument,
March, 1895.

SHADY BEACH plat shows a granite monument at described location,
October 9, 1940.

Checked monument, November, 1954.

Used old ties, dug through the top 2 in. of bituminous and found 3/4 in. diameter
brass plug, September 23, 1974.

Set a cast iron cap and bolt monument, June 1, 1976.

Monument checked, July 29, 1977.

Tied monument, July 16, 1990.

Found cast iron monument, down +/-0.08 ft., after road overlay and storm sewer
construction by MN/DOT, September 29, 1992.

Retied monument, July 19, 2002.

Monument gone, August 7, 2007.

Dug out hole where monument was and found granite monument, down 4 in.
Checked ties and the 1/2 mile distance to the Southwest Corner of Section 18,
Township 29, Range 22; found some ties the same and distance to the Southwest
Corner within 0.03 ft. of computed distance; set a cast iron cap and bolt monument
over granite monument, in concrete, flush with road surface, August 16, 2007.

Tied monument, August 22, 2007.

Checked condition of monument and ties, found a cast iron monument flush in
bituminous road stamped "Quarter Corner", July 31, 2012.