

MONUMENT 424

CERTIFICATE OF LOCATION OF GOVERNMENT CORNER

East Quarter Corner of Section 15, Township 29 North, Range 23 West, County of Ramsey, State of Minnesota.

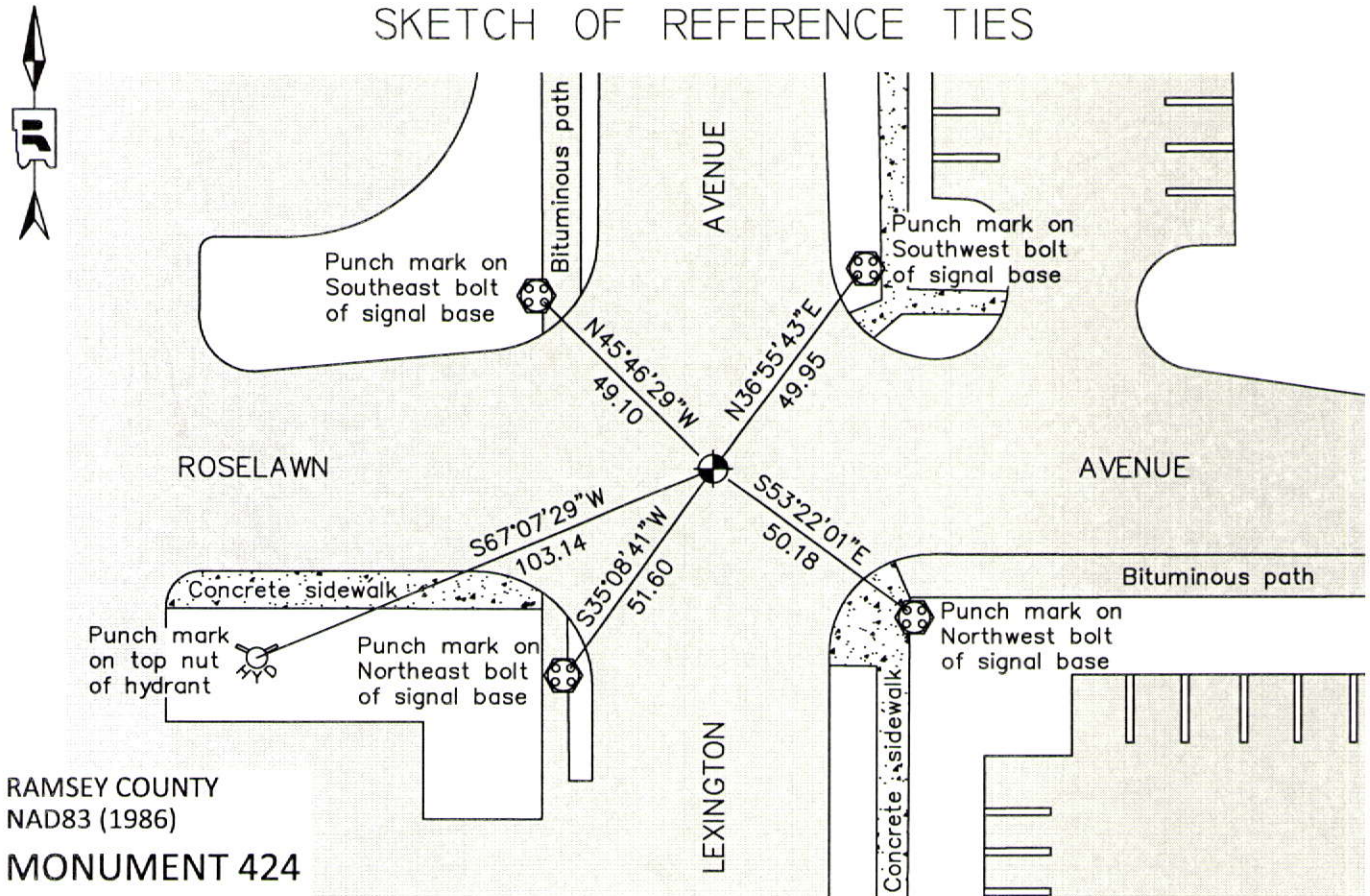
At the corner location shown on the sketch

On June 25, 2012 found a cast iron monument within a cast iron manhole assembly.

left monument as found raised/lowered monument removed monument (explain)

On _____ placed a _____

SKETCH OF REFERENCE TIES



RAMSEY COUNTY
NAD83 (1986)

MONUMENT 424

X= 561298.564 (Easting)
Y= 175967.705 (Northing)

ALL DISTANCES ARE SHOWN IN U.S. SURVEY FEET.
BEARINGS ARE FOR TIE REFERENCE PURPOSES ONLY.

Statements of evidence relative to this corner are on the following page.

I hereby certify that this document was prepared by me or under my direct supervision and that I am a duly Licensed Land Surveyor under the laws of the State of Minnesota.

Daniel D. Baar

12-30-14

Daniel D. Baar
Minnesota License No. 45816

- County Surveyor Land Surveyor
 Deputy County Surveyor

OFFICE OF COUNTY SURVEYOR
County of Ramsey

I hereby certify that this document was filed in the County Surveyor's office this 30th day of December, 2014.

Craig W. Hinzman

Craig W. Hinzman, L.S.
Ramsey County Surveyor

MONUMENT 424

East Quarter Corner of Section 15, Township 29 North, Range 23 West

Set 1/4 Section post, Bur Oak 12 S81°E 30, "Do" (Bur Oak) 15 S65°W 53, November 3, 1847.

Found monument at 1/4 Corner between Section 14 and 15. Fixed by J. H. Armstrong, 1895.

The 1/4 Corner between Sections 14 and 15 was retied, June, 1897.

Found a P.K. nail (see Book 1, page 23) in 1974. Checks with ties. (Page 3 of 3)

Placed a cast iron monument, May 15, 1975.

Tied monument, July 28, 1975.

Checked monument, July 29, 1977.

Monument destroyed by construction, 1979.

Replaced monument with a 20 in. cast iron monument, April 17, 1981.

Tied monument, flush, March 4, 1993.

Tied monument and set a 20 in. cast iron monument 1.5 ft. below grade, April 20 and May 1, 1998.

Set a cast iron manhole assembly over cast iron monument, July 27, 1998.

Retied monument, July 19, 2002.

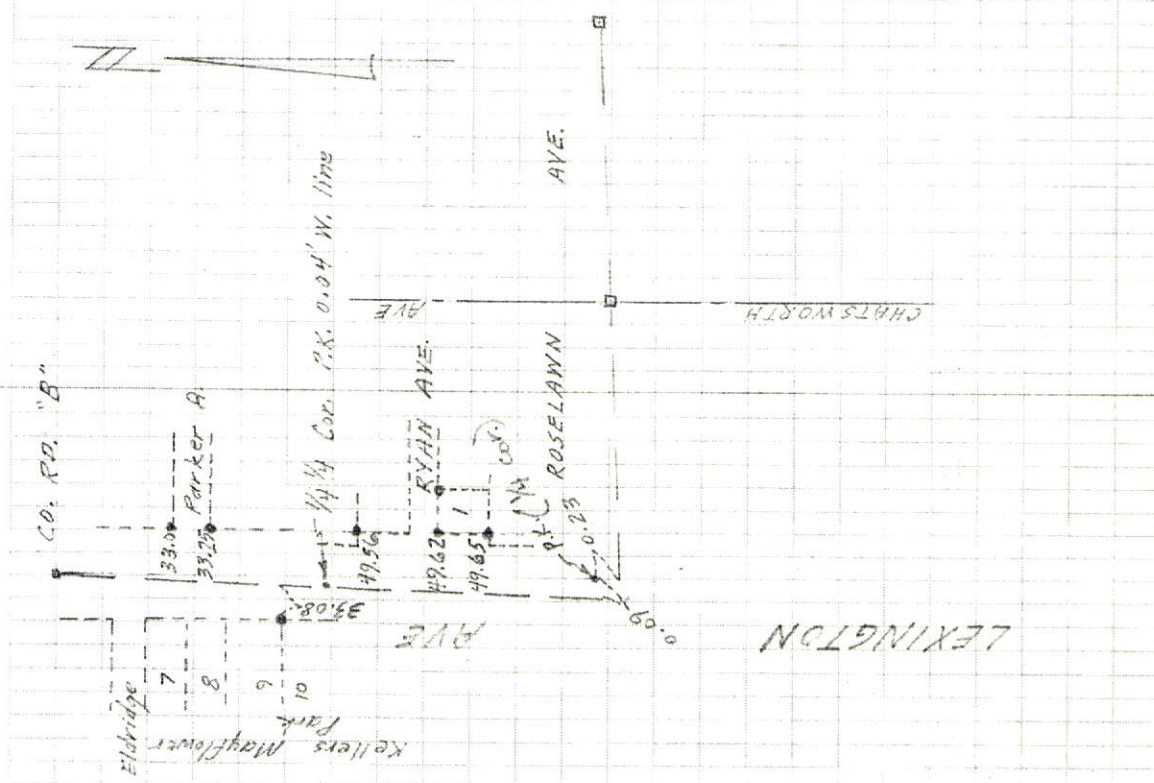
Retied monument, August 7, 2007.

Checked condition of cast iron monument within a cast iron manhole assembly, and ties, June 25, 2012.

MONUMENT 424

East Quarter Corner of Section 15, Township 29 North, Range 23 West

23



SECTION 14 T29, R23
(Relocating W 1/4 Corner)