

MONUMENT 422

CERTIFICATE OF LOCATION OF GOVERNMENT CORNER

East Quarter Corner of Section 16, Township 29 North, Range 23 West, County of Ramsey, State of Minnesota.

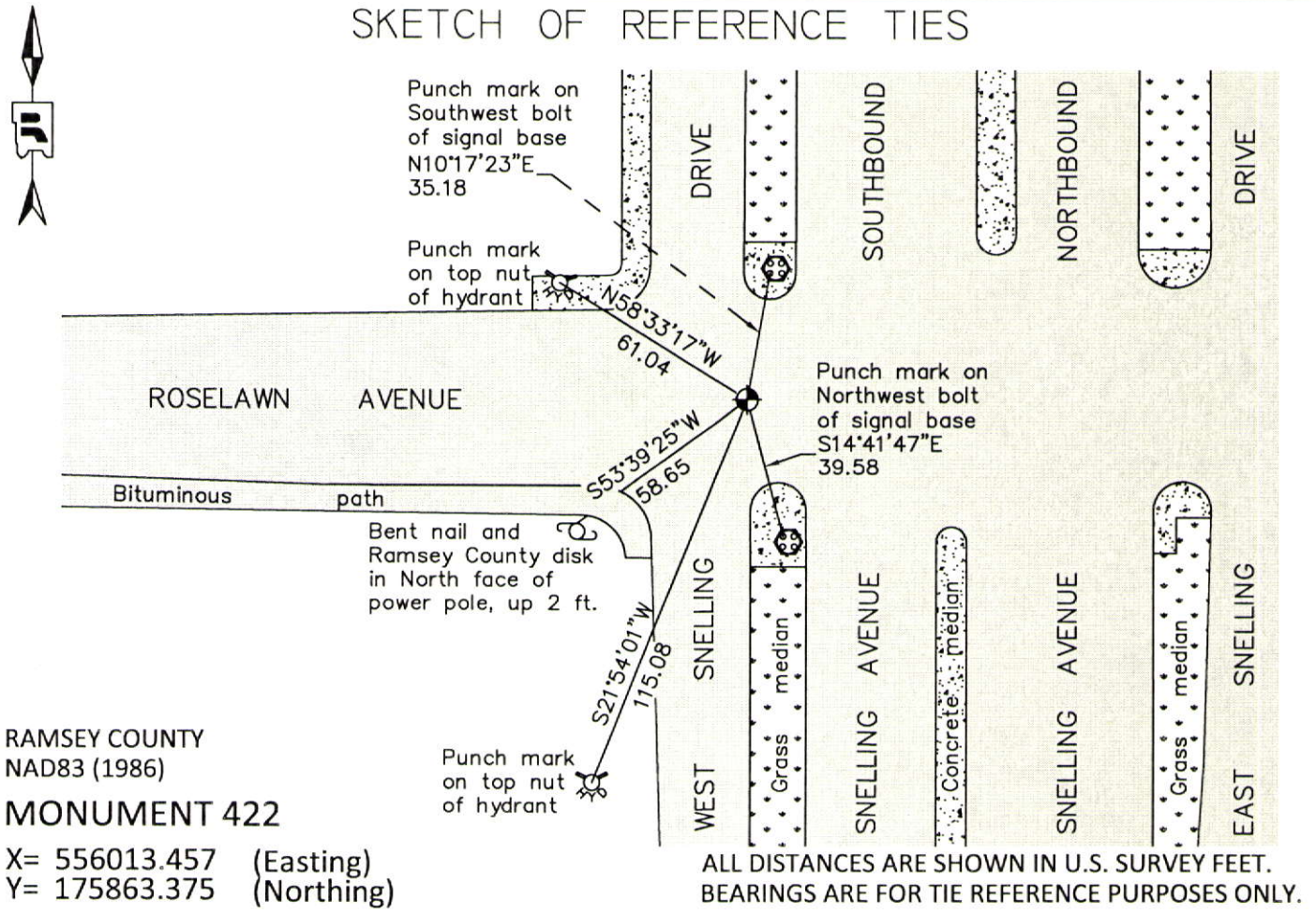
At the corner location shown on the sketch

On August 1, 2012 found a "Ramsey County" cast iron monument, flush in bituminous road.

left monument as found raised/lowered monument removed monument (explain)

On _____ placed a _____

SKETCH OF REFERENCE TIES



I hereby certify that this document was prepared by me or under my direct supervision and that I am a duly Licensed Land Surveyor under the laws of the State of Minnesota.

Daniel D. Baar 12-30-14
Date
Minnesota License No. 45816

- County Surveyor Land Surveyor
 Deputy County Surveyor

OFFICE OF COUNTY SURVEYOR
County of Ramsey

I hereby certify that this document was filed in the County Surveyor's office this 30th day of December, 20 14.

Craig W. Hinzman
Craig W. Hinzman, L.S.
Ramsey County Surveyor

MONUMENT 422

East Quarter Corner of Section 16, Township 29 North, Range 23 West

Set 1/4 Section post, Bur Oak 12 N65°E 200, November 3, 1847.

The 1/4 Corner between Section 15 and 16 was fixed by J.H.A. in 1897; retied it and set monument, October, 1897.

MID OAKS plat shows granite monument at location, September 9, 1938.

Checked monument, June, 1948.

Found a granite monument down 0.4 ft.; set a short cast iron monument, August 9, 1976.

Checked monument, July 29, 1977.

Monument destroyed by construction; position reestablished, June 13, 1988.

Cast iron monument placed, July, 1988.

Tied monument, flush, March 4, 1993.

Retied monument, July 19, 2002.

Retied monument, August 7, 2007.

Checked monument and ties; found cast iron monument marked "RAMSEY COUNTY", flush in bituminous road, August 1, 2012.