

MONUMENT 413

CERTIFICATE OF LOCATION OF GOVERNMENT CORNER

Northeast Corner of Section 15, Township 29 North, Range 22 West, County of Ramsey, State of Minnesota.

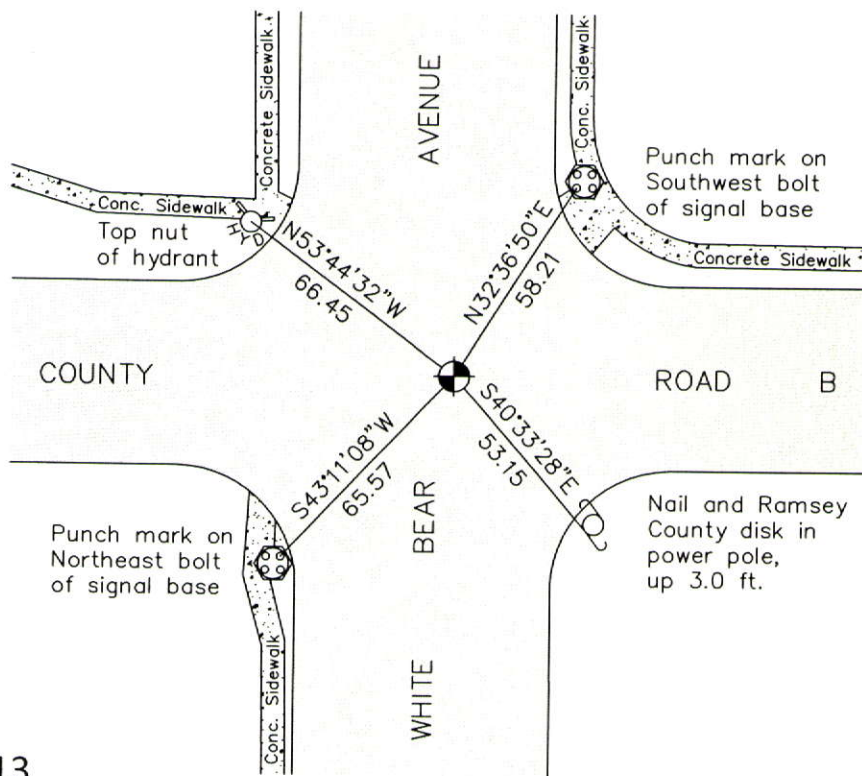
At the corner location shown on the sketch

On June 27, 2011 found a cast iron monument, flush.

left monument as found raised/lowered monument removed monument (explain)

On _____ placed a _____

SKETCH OF REFERENCE TIES



RAMSEY COUNTY
NAD83 (1986)

MONUMENT 413

X= 592645.189 (Easting)
Y= 178705.369 (Northing)

ALL DISTANCES ARE SHOWN IN U.S. SURVEY FEET.
BEARINGS ARE FOR TIE REFERENCE PURPOSES ONLY.

Statements of evidence relative to this corner are on the following page.

I hereby certify that this document was prepared by me or under my direct supervision and that I am a duly Licensed Land Surveyor under the laws of the State of Minnesota.

Daniel D. Baar 12-30-14
Daniel D. Baar Date
Minnesota License No. 45816

- County Surveyor
 Deputy County Surveyor Land Surveyor

OFFICE OF COUNTY SURVEYOR
County of Ramsey

I hereby certify that this document was filed in the County Surveyor's office this 30th day of December, 20 14.

Craig W. Hinzman
Craig W. Hinzman, L.S.
Ramsey County Surveyor

MONUMENT 413

Northeast Corner of Section 15, Township 29 North, Range 22 West

Set post Corner to Sections 10, 11, 14 & 15, W. Oak 18 S32°E 60; "Do" W. Oak 14 N71°W 66. Completed November 29, 1847.

The Northwest Corner of Section 14, found Government Witness stump, set monument 1896.

Checked monument, December 8, 1960.

Found a cast iron monument, 1974.

Cast iron monument broken off by White Bear Avenue project, November 29, 1983.

Checked and tied monument, July 6, 1984.

Retied monument, October 19, 2000.

Retied monument, August 31, 2006.

Retied cast iron monument, flush, June 27, 2011.