

MONUMENT 404

CERTIFICATE OF LOCATION OF GOVERNMENT CORNER

North Quarter of Section 13, Township 29 North, Range 23 West, County of Ramsey,
State of Minnesota.

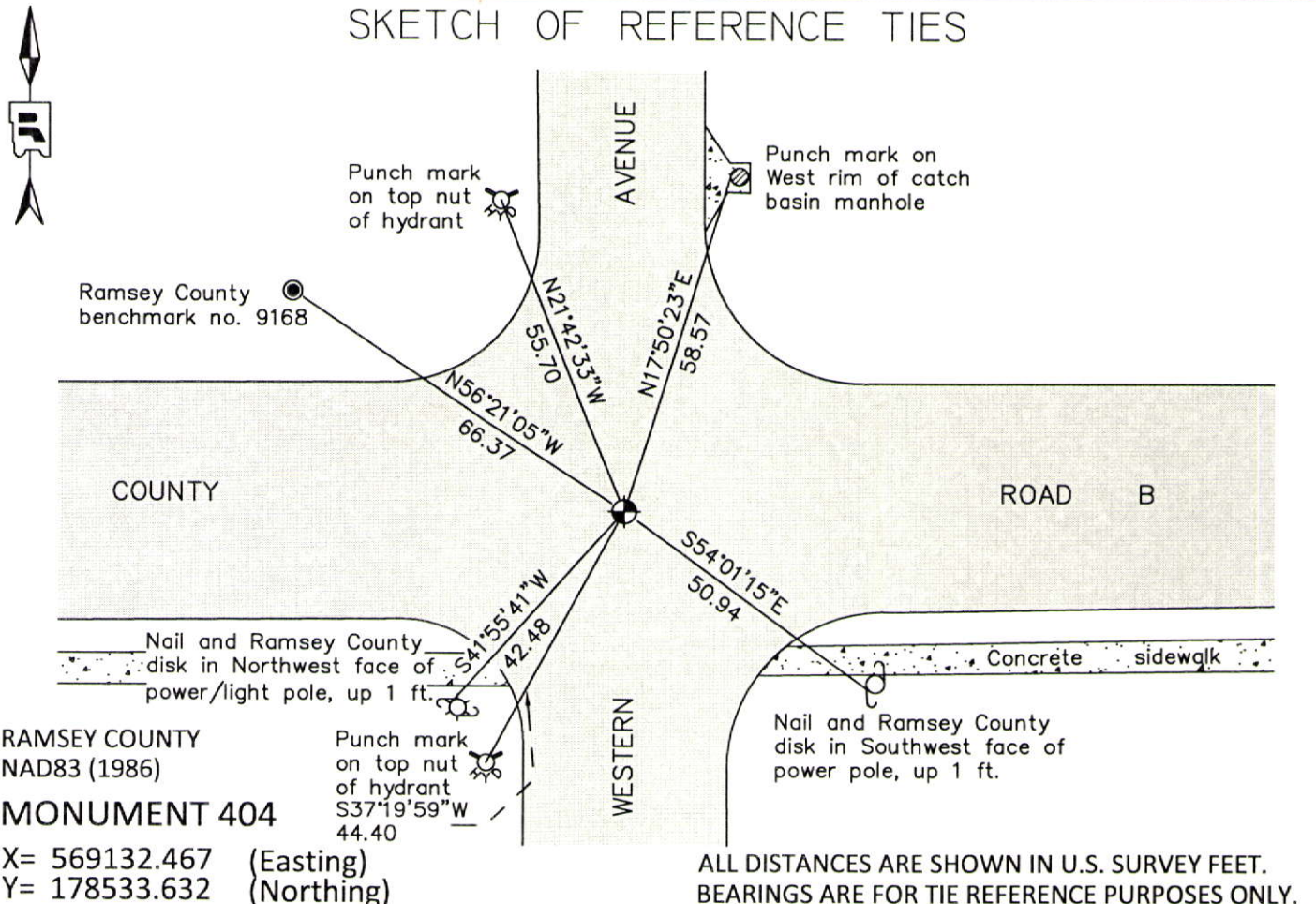
At the corner location shown on the sketch

On October 3, 2012 found a "Ramsey County" cast iron monument, flush in bituminous road.

left monument as found raised/lowered monument removed monument (explain)

On _____ placed a _____

SKETCH OF REFERENCE TIES



RAMSEY COUNTY
NAD83 (1986)
MONUMENT 404

X= 569132.467 (Easting)
Y= 178533.632 (Northing)

ALL DISTANCES ARE SHOWN IN U.S. SURVEY FEET.
BEARINGS ARE FOR TIE REFERENCE PURPOSES ONLY.

Statements of evidence relative to this corner are on the following page.

I hereby certify that this document was prepared by me or under my direct supervision and that I am a duly Licensed Land Surveyor under the laws of the State of Minnesota.

Daniel D. Baar 12-30-14
Daniel D. Baar Date
Minnesota License No. 45816

- County Surveyor Land Surveyor
 Deputy County Surveyor

OFFICE OF COUNTY SURVEYOR
County of Ramsey

I hereby certify that this document was filed in the County Surveyor's office this 30th day of December, 20 14.

Craig W. Hinzman
Craig W. Hinzman, L.S.
Ramsey County Surveyor

MONUMENT 404

North Quarter of Section 13, Township 29 North, Range 23 West

Set 1/4 Section post, W. Oak 16 N9°E 86, "Do" (W. Oak) 12 S25°E 83, November 3, 1847.

The 1/4 Corner between Sections 12 and 13 was fixed by Gates A. Johnson in December, 1888. Found old iron stake.

Set monument, 1896.

MCCARRON'S VIEW ADDITION plat shows an iron monument at described location, December 31, 1957.

Retied monument, March 13, 1961.

Found a 4 in. long bolt over a granite monument, down 4-1/4 in., March 13, 1975.

Set a short (4-1/2 in.) cast iron monument, June 30, 1975.

Tied monument, February 19, 1976.

Checked monument, July 29, 1977.

Tied out and removed monument for County road construction, July, 1991.

Set a 20 in. cast iron monument, October 13, 1992.

Tied monument, July 19, 2002.

Retied monument, August 8, 2007.

Found a "Ramsey County" cast iron monument flush in bituminous road, checked condition of ties, October 3, 2012.