

MONUMENT 400

CERTIFICATE OF LOCATION OF FOUND MONUMENT

North Quarter Corner of Section 15, Township 29 North, Range 23 West, County of Ramsey, State of Minnesota.

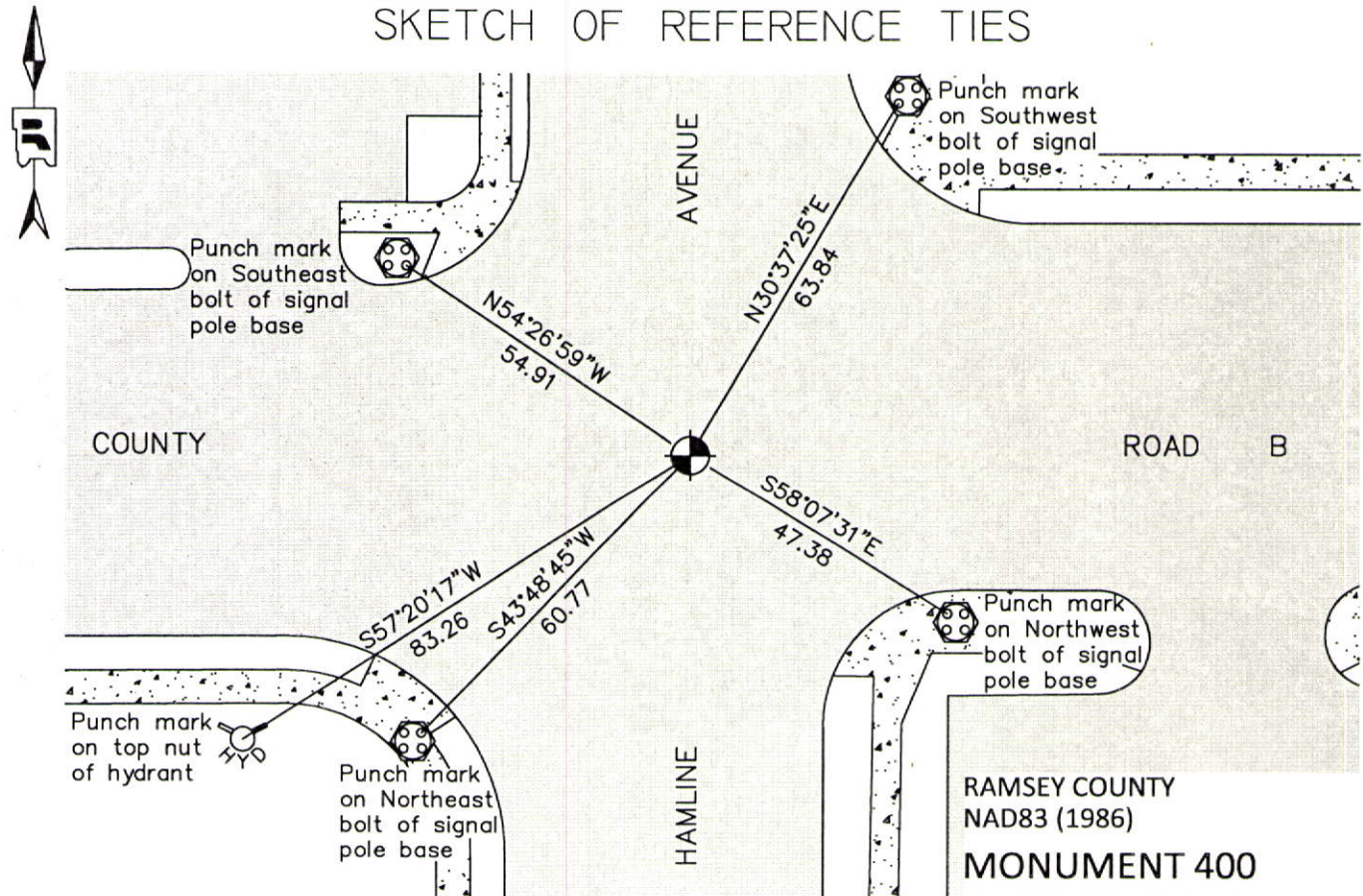
At the corner location shown on the sketch

On August 15, 2012 found a "Ramsey County" cast iron monument within a cast iron manhole assembly.

left monument as found raised/lowered monument removed monument (explain)

On _____ placed a _____

SKETCH OF REFERENCE TIES



ALL DISTANCES ARE SHOWN IN U.S. SURVEY FEET.
 BEARINGS ARE FOR TIE REFERENCE PURPOSES ONLY.

Statements of evidence relative to this corner are on the following page.

I hereby certify that this document was prepared by me or under my direct supervision and that I am a duly Licensed Land Surveyor under the laws of the State of Minnesota.

Daniel D. Baar 12-30-14
 Daniel D. Baar Date
 Minnesota License No. 45816

County Surveyor Land Surveyor
 Deputy County Surveyor

OFFICE OF COUNTY SURVEYOR
 County of Ramsey

I hereby certify that this document was filed in the County Surveyor's office this 30th day of December, 20 14.

Craig W. Hinzman
 Craig W. Hinzman, L.S.
 Ramsey County Surveyor

MONUMENT 400

North Quarter Corner of Section 15, Township 29 North, Range 23 West

Set 1/4 Section post, Bur Oak 10 S22°W 31, "Do" (Bur Oak) 8 N62°E 56, November 3, 1847.

The 1/4 Corner between Sections 10 and 15, was fixed May, 1897. Found old iron stake at 1/4 Corner, and set monument.

WOEHRLES ADDITION plat shows a stone monument at described location, February 25, 1946.

New ties, August, 1962.

Found a cast iron monument flush, August, 1974.

Checked monument, July 29, 1977.

Tied monument, May 30, 1984.

Monument checked, January 18, 1991.

Retied monument, July 31, 1998.

Removed short (8 in.) cast iron monument; set a 20 in. cast iron monument, down 18 in.; contractor to set tube and manhole assembly, July 6, 2001.

Tied monument, August 7, 2002.

Retied monument, August 7, 2007.

Checked condition of cast iron monument in cast iron manhole assembly and ties, August 16, 2012.