

MONUMENT 3SC

CERTIFICATE OF LOCATION OF GOVERNMENT CORNER

Northeast Corner of Section 6, Township 30 North, Range 23 West, County of Ramsey, State of Minnesota.

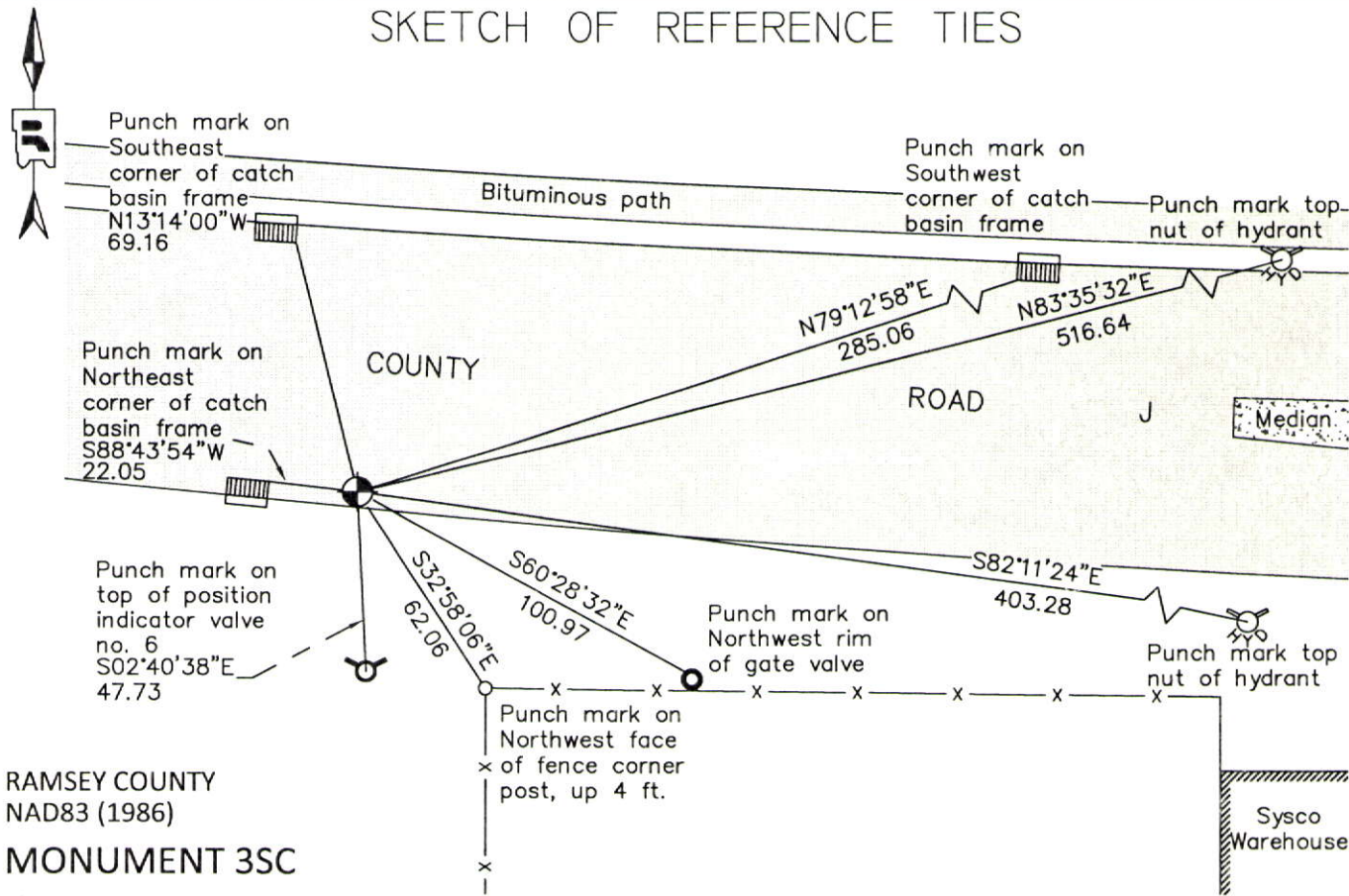
At the corner location shown on the sketch

On May 25, 2012 found a cast iron monument within a cast iron manhole assembly.

left monument as found raised/lowered monument removed monument (explain)

On _____ placed a _____

SKETCH OF REFERENCE TIES



RAMSEY COUNTY
NAD83 (1986)

MONUMENT 3SC

X= 544940.610 (Easting)
Y= 221584.875 (Northing)

ALL DISTANCES ARE SHOWN IN U.S. SURVEY FEET.
BEARINGS ARE FOR TIE REFERENCE PURPOSES ONLY.

Statements of evidence relative to this corner are on the following page.

I hereby certify that this document was prepared by me or under my direct supervision and that I am a duly Licensed Land Surveyor under the laws of the State of Minnesota.

Daniel D. Baar 12-30-14
Daniel D. Baar Date

Minnesota License No. 45816

- County Surveyor Land Surveyor
 Deputy County Surveyor

OFFICE OF COUNTY SURVEYOR
County of Ramsey

I hereby certify that this document was filed in the County Surveyor's office this 30th day of December, 20 14.

Craig W. Hinzman
Craig W. Hinzman, L.S.
Ramsey County Surveyor

MONUMENT 3SC

Northeast Corner of Section 6, Township 30 North, Range 23 West

Intersect 3rd correction line 22.16 links East of 1/4 Section Corner on South side of Section 33, T. 31 N., R. 23 W. 4th Mer. and set post Corner to Sections 3 & 6, Bur Oak 18 S80°W 16.80, December 14, 1847.

In establishing the Northeast Corner of Section 6, new straight line East and West and fixed Section Corner Government distance from Northwest Corner of Section 6 and set monument, January 20, 1903.

Checked granite, January, 1946.

Checked granite, November, 1950.

Checked granite, March, 1952.

Tied granite, down 7 in., February, 1954.

The described corner was evidenced by a 6 in. square granite monument, October 27, 1964. (Anoka County Surveyor's Office)

Checked granite, April, 1974.

Found a granite monument flush and retied, August 23, 1974.

Monument to be removed by construction, 1991.

Placed a spike in position, August 3, 1994.

Set a 20 in. cast iron monument, August 10, 1994.

Set a sign and post 5 ft. South, October 18, 1994.

Removed 20 in. cast iron monument and set a 20 in. cast iron monument marked "3rd Corr. Line" 0.1 ft. North of Closing Corner (on line between the S 1/4 Corner and the SE Corner of Sec. 33, T. 31, R.23, July 28, 1995.

Tied 3SC monument, December 14, 1998.

Retied monument, June, 2004.

MONUMENT 3SC

Northeast Corner of Section 6, Township 30 North, Range 23 West

Tied out monument for removal during reconstruction of County Road J,
June 6, 2006.

Reset a 20 in. cast iron monument within a cast iron manhole assembly,
April 24, 2007.

Tied out monument, June 29, 2007.

Checked condition of cast iron monument within a cast iron manhole assembly and
ties, May 25, 2012.