

MONUMENT 399

CERTIFICATE OF LOCATION OF FOUND MONUMENT

Northeast Corner of Section 16, Township 29 North, Range 23 West, County of Ramsey, State of Minnesota.

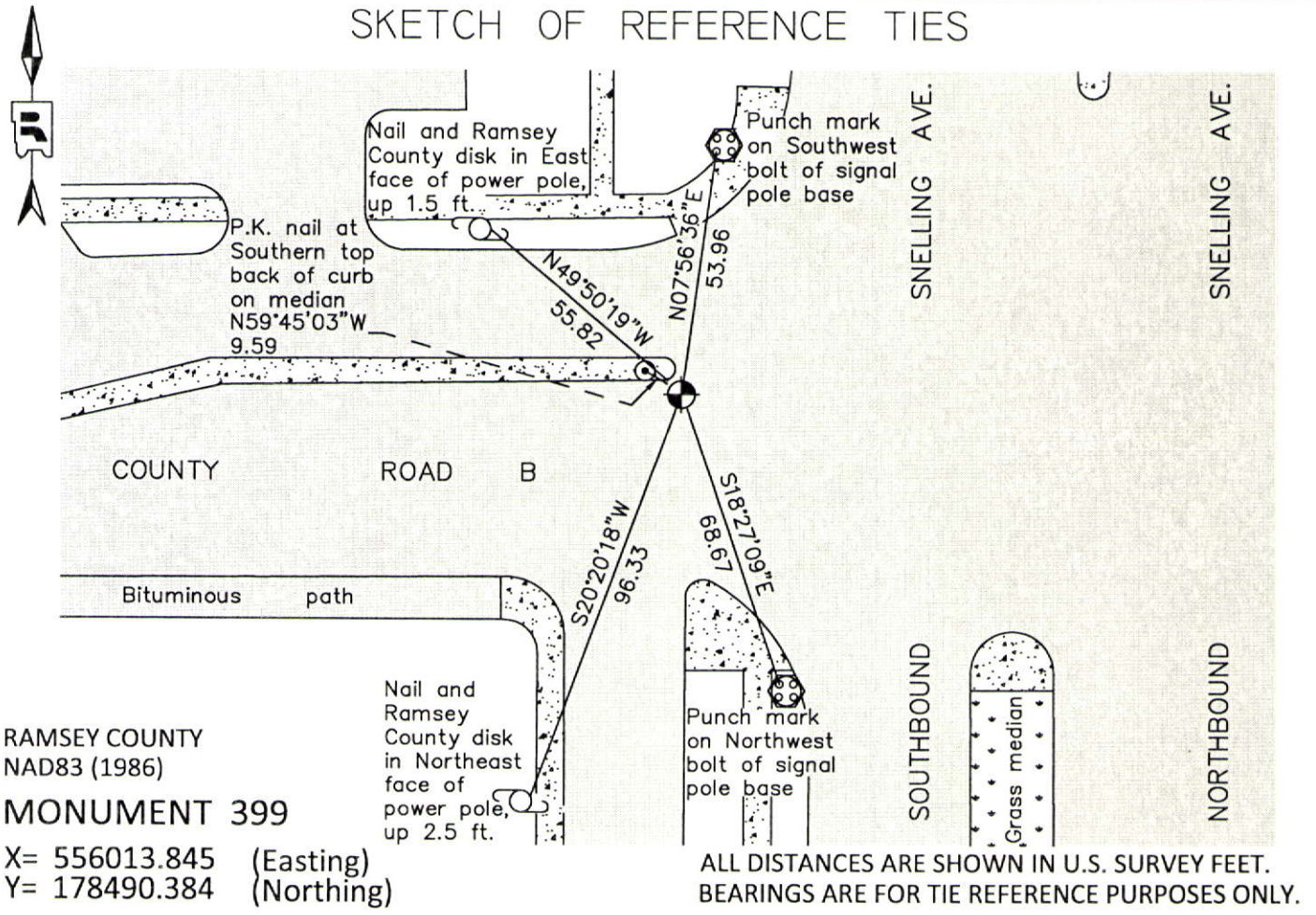
At the corner location shown on the sketch

On July 13, 2012 found a "Ramsey County" cast iron monument down 0.05 ft. in bituminous road.

left monument as found raised/lowered monument removed monument (explain)

On _____ placed a _____

SKETCH OF REFERENCE TIES



Statements of evidence relative to this corner are on the following page.

I hereby certify that this document was prepared by me or under my direct supervision and that I am a duly Licensed Land Surveyor under the laws of the State of Minnesota.

Daniel D. Baar 12-30-14
Daniel D. Baar Date
Minnesota License No. 45816

- County Surveyor
 Deputy County Surveyor Land Surveyor

OFFICE OF COUNTY SURVEYOR
County of Ramsey

I hereby certify that this document was filed in the County Surveyor's office this 30th day of December, 20 14.

Craig W. Hinzman
Craig W. Hinzman, L.S.
Ramsey County Surveyor

MONUMENT 399

Northeast Corner of Section 16, Township 29 North, Range 23 West

Set post Corner to Sections 9, 10, 15, & 16, W. Oak 22 N85°E 61, "Do" (W. Oak) 12 S29°E 38, November 3, 1847.

The Northeast Corner of Section 16 was fixed from a fence, no witness trees, January 5, 1897.

Set monument, May, 1897.

Checked iron monument, March, 1948.

Checked iron monument, July, 1969.

Found 1 in. solid iron down 0.48 ft. in East bound left turn lane of County Road B, South of concrete median +/-3 ft. Set a cast iron monument, June 23, 1976.

Tied monument, August 13, 1990.

Retied monument, August 7, 2002.

Retied monument, August 7, 2007.

Retied a Ramsey County cast iron monument, down 0.05 ft., in bituminous road, July 13, 2012.