

MONUMENT 397

CERTIFICATE OF LOCATION OF FOUND MONUMENT

Northeast Corner of Section 17, Township 29 North, Range 23 West, County of Ramsey, State of Minnesota.

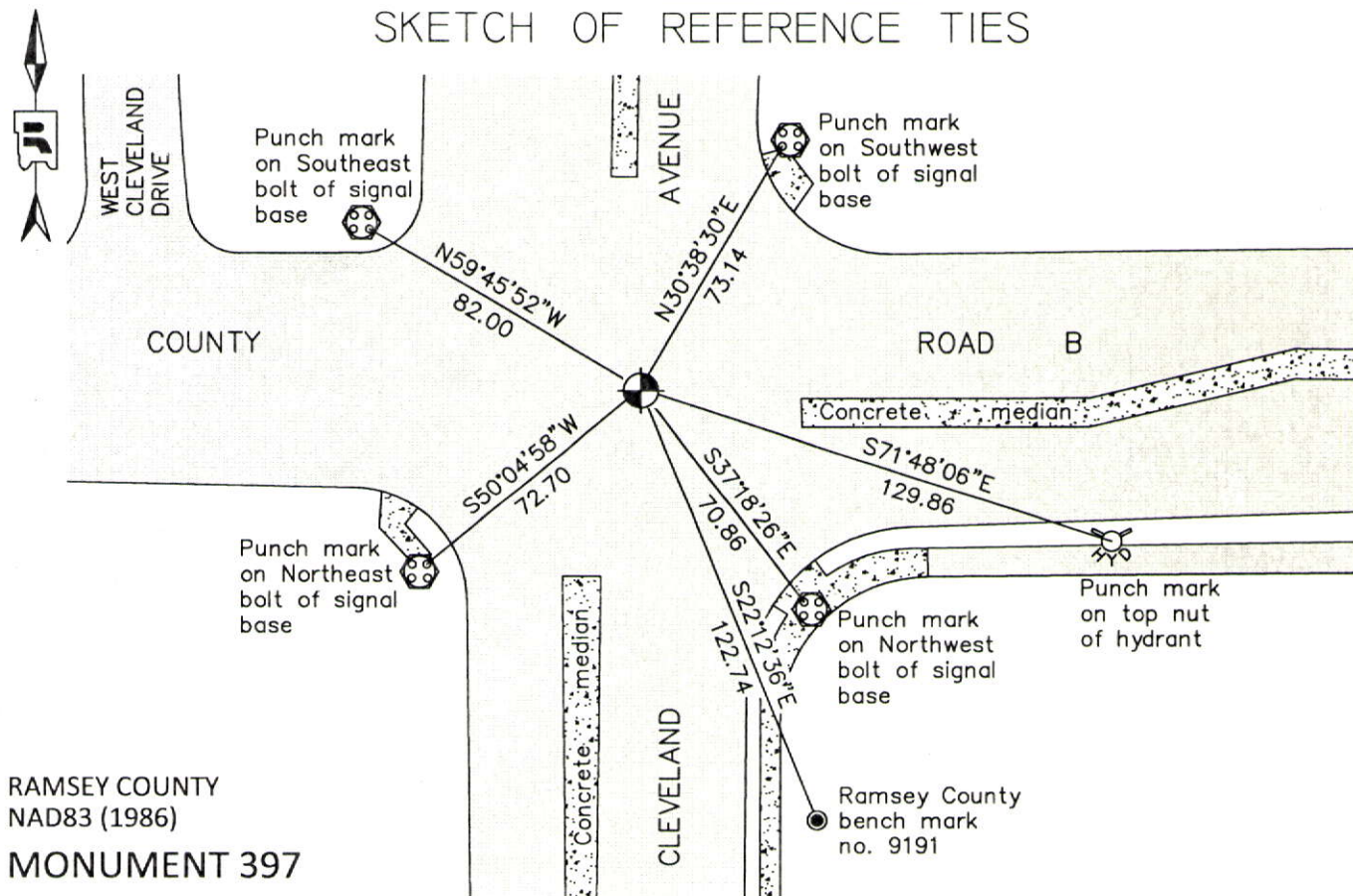
At the corner location shown on the sketch

On August 15, 2012 found a cast iron monument in bituminous road, down 0.1 ft.

left monument as found raised/lowered monument removed monument (explain)

On _____ placed a _____

SKETCH OF REFERENCE TIES



RAMSEY COUNTY
NAD83 (1986)
MONUMENT 397

X= 550750.830 (Easting)
Y= 178457.569 (Northing)

ALL DISTANCES ARE SHOWN IN U.S. SURVEY FEET.
BEARINGS ARE FOR TIE REFERENCE PURPOSES ONLY.

Statements of evidence relative to this corner are on the following page.

I hereby certify that this document was prepared by me or under my direct supervision and that I am a duly Licensed Land Surveyor under the laws of the State of Minnesota.

Daniel D. Baar 12-30-14
Daniel D. Baar Date
Minnesota License No. 45816

- County Surveyor Land Surveyor
 Deputy County Surveyor

OFFICE OF COUNTY SURVEYOR
County of Ramsey

I hereby certify that this document was filed in the County Surveyor's office this 30th day of December, 20 14.

Craig W. Hinzman
Craig W. Hinzman, L.S.
Ramsey County Surveyor

MONUMENT 397

Northeast Corner of Section 17, Township 29 North, Range 23 West

Set post Corner to Sections 8, 9, 16, & 17, W. Oak 15 S19°W 42, "Do" (W. Oak) 10 S44°E 26, November 3, 1847.

In establishing the Northeast Corner of Section 17, found old stake at Section Corner, Government witness trees gone; tied it and set monument, August 17, 1899.

Checked monument, November, 1933.

Tied monument, May 9, 1963.

Found a broken cast iron monument and placed a full cast iron monument, June 25, 1975.

Checked monument, July 29, 1977.

Tied monument, January 16, 1991.

Retied monument, July 23, 2002.

Retied monument, September 5, 2007.

Checked condition of cast iron monument, down 0.1 ft., in bituminous road, and ties, August 15, 2012.