

MONUMENT 396

CERTIFICATE OF LOCATION OF FOUND MONUMENT

North Quarter Corner of Section 17, Township 29 North, Range 23 West, County of Ramsey, State of Minnesota.

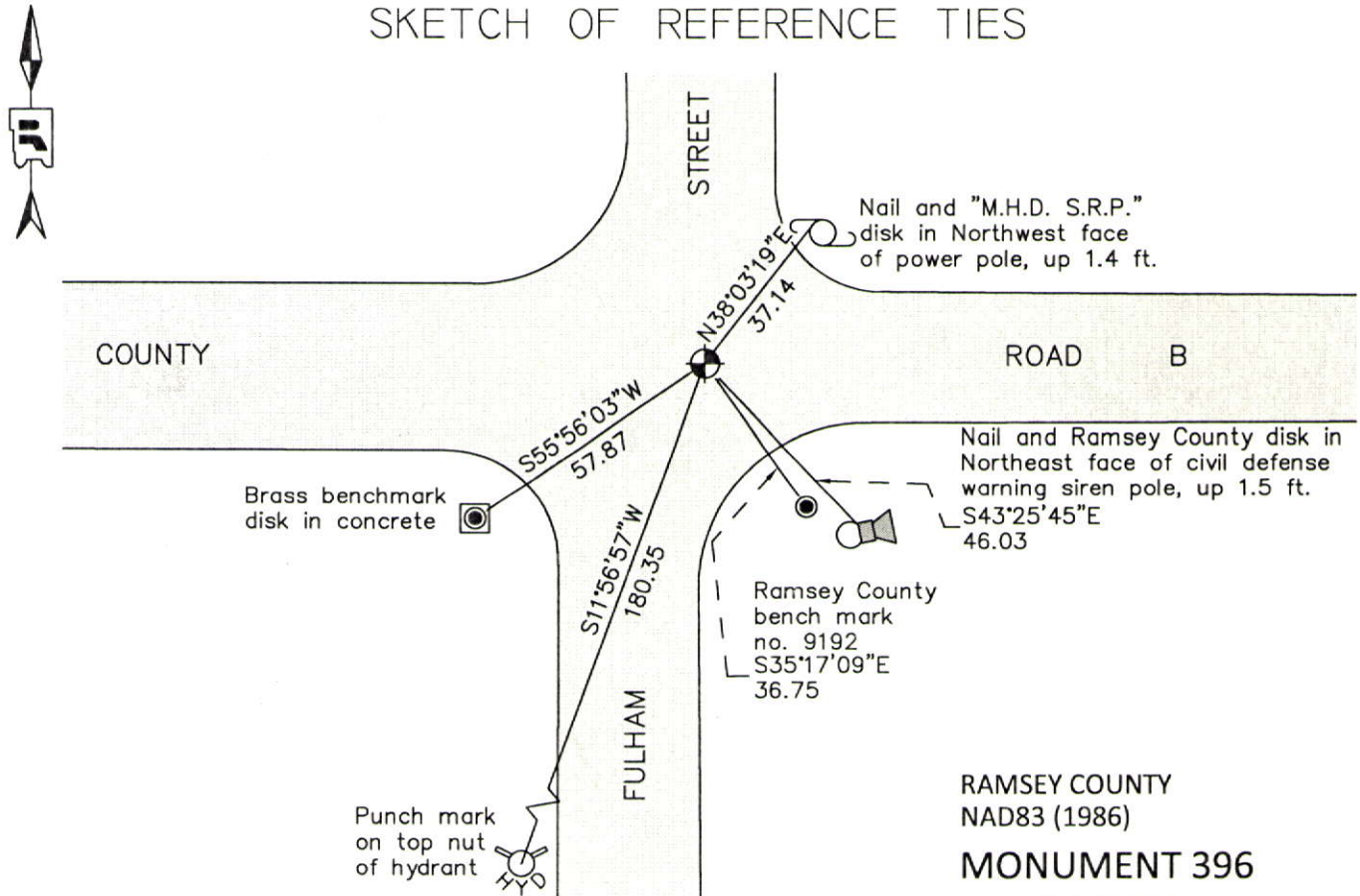
At the corner location shown on the sketch

On June 21, 2012 found a "Ramsey County" cast iron monument, down 0.25 ft., in bituminous road.

left monument as found
 raised/lowered monument
 removed monument (explain)

On _____ placed a _____

SKETCH OF REFERENCE TIES



ALL DISTANCES ARE SHOWN IN U.S. SURVEY FEET.
BEARINGS ARE FOR TIE REFERENCE PURPOSES ONLY.

RAMSEY COUNTY
 NAD83 (1986)
MONUMENT 396
 X= 548098.777 (Easting)
 Y= 178454.960 (Northing)

Statements of evidence relative to this corner are on the following page.

I hereby certify that this document was prepared by me or under my direct supervision and that I am a duly Licensed Land Surveyor under the laws of the State of Minnesota.

Daniel D. Baar 12-30-14
 Daniel D. Baar Date
 Minnesota License No. 45816

County Surveyor Land Surveyor
 Deputy County Surveyor

OFFICE OF COUNTY SURVEYOR
 County of Ramsey

I hereby certify that this document was filed in the County Surveyor's office this 30th day of December, 20 14.

Craig W. Hinzman
 Craig W. Hinzman, L.S.
 Ramsey County Surveyor

MONUMENT 396

North Quarter Corner of Section 17, Township 29 North, Range 23 West

Set 1/4 Section post, W. Oak 15 S40°E 13, "Do" (W. Oak) 14 N9°W 37, November 3, 1847.

In establishing the 1/4 Corner between Sections 8 and 17, found Government stump, fixed Corner and tied it, December 9, 1898.

Set monument, August, 1899.

Reset monument, May 28, 1933.

Monument missing, replaced with 2 in. iron, October 23, 1933.

FAIRWAYS SUBDIVISION plat shows an iron monument at this location, April 25, 1945.

Checked monument, April, 1945.

Checked monument, July, 1959.

Found a cast iron monument down 0.2 ft., June 16, 1976.

Checked monument, July 29, 1977.

Tied monument, June 8, 1984.

Retied monument, August 13, 1990.

Retied monument, July 23, 2002.

Retied monument, September 5, 2007.

Checked condition of cast iron monument, down 0.25 ft., in bituminous road, and ties, June 21, 2012.