

# MONUMENT 395

## CERTIFICATE OF LOCATION OF GOVERNMENT CORNER

Northwest Corner of Section 17, Township 29 North, Range 23 West, County of Ramsey, State of Minnesota.

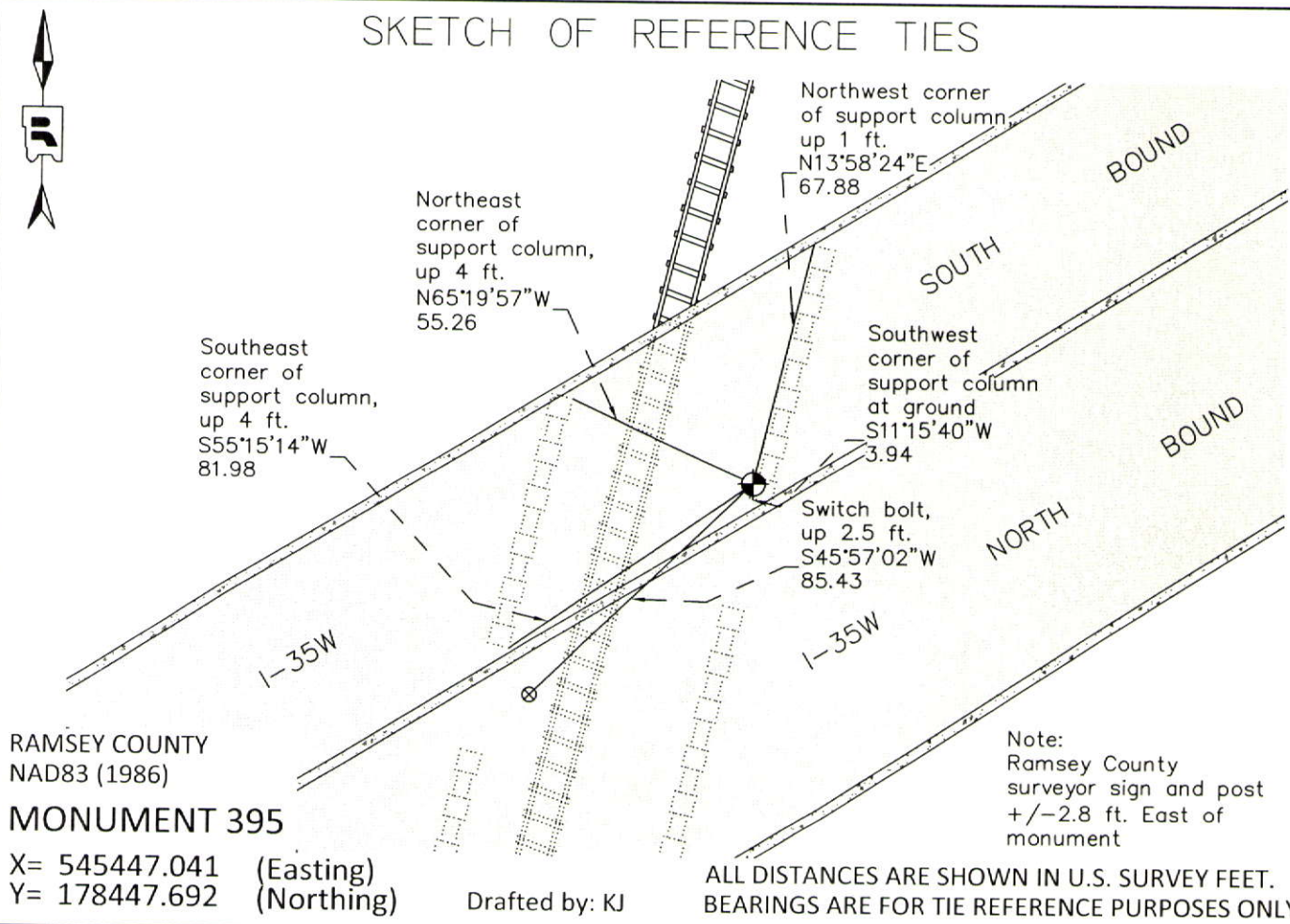
At the corner location shown on the sketch

On October 10, 2011 found a HENNEPIN COUNTY SURVEYOR cast iron monument flush in concrete, under bridge.

left monument as found     
  raised/lowered monument     
  removed monument (explain)

On \_\_\_\_\_ placed a \_\_\_\_\_

### SKETCH OF REFERENCE TIES



Statements of evidence relative to this corner are on the following page.

I hereby certify that this document was prepared by me or under my direct supervision and that I am a duly Licensed Land Surveyor under the laws of the State of Minnesota.

Daniel D. Baar      12-30-14  
 Daniel D. Baar      Date  
 Minnesota License No. 45816

- County Surveyor       Land Surveyor  
 Deputy County Surveyor

OFFICE OF COUNTY SURVEYOR  
 County of Ramsey

I hereby certify that this document was filed in the County Surveyor's office this 30th day of December, 20 14.

Craig W. Hinzman  
 Craig W. Hinzman, L.S.  
 Ramsey County Surveyor

# MONUMENT 395

Northwest Corner of Section 17, Township 29 North, Range 23 West

Set post Corner to Sections 7, 8, 17, & 18, Bur Oak 17 N31-1/2°W 1.30, "Do" (Bur Oak) 14 S62°E 1.70, November 3, 1847.

In Establishing the Northwest Corner of Section 17 found iron stake at Section Corner, Government Witness trees gone, tied it and set monument, August, 1899.

Found a cast iron monument under bridge on east slope, 1975.

Checked monument, August 29, 1977.

Tied monument, August 16, 1984.

Placed sign and post and retied monument, August 13, 1990.

Retied monument, July 10, 2006.

Found cast iron monument cemented flush in concrete base beneath Interstate 35W bridge over railroad tracks, in good condition. Did not re-measure ties, August 8, 2006.(Hennepin County)

Retied a HENNEPIN COUNTY SURVEYOR cast iron monument flush in concrete under bridge, October 10, 2011.