

MONUMENT 384

CERTIFICATE OF LOCATION OF GOVERNMENT CORNER

East 1/4 Corner of Section 7, Township 29 North, Range 22 West, County of Ramsey, State of Minnesota.

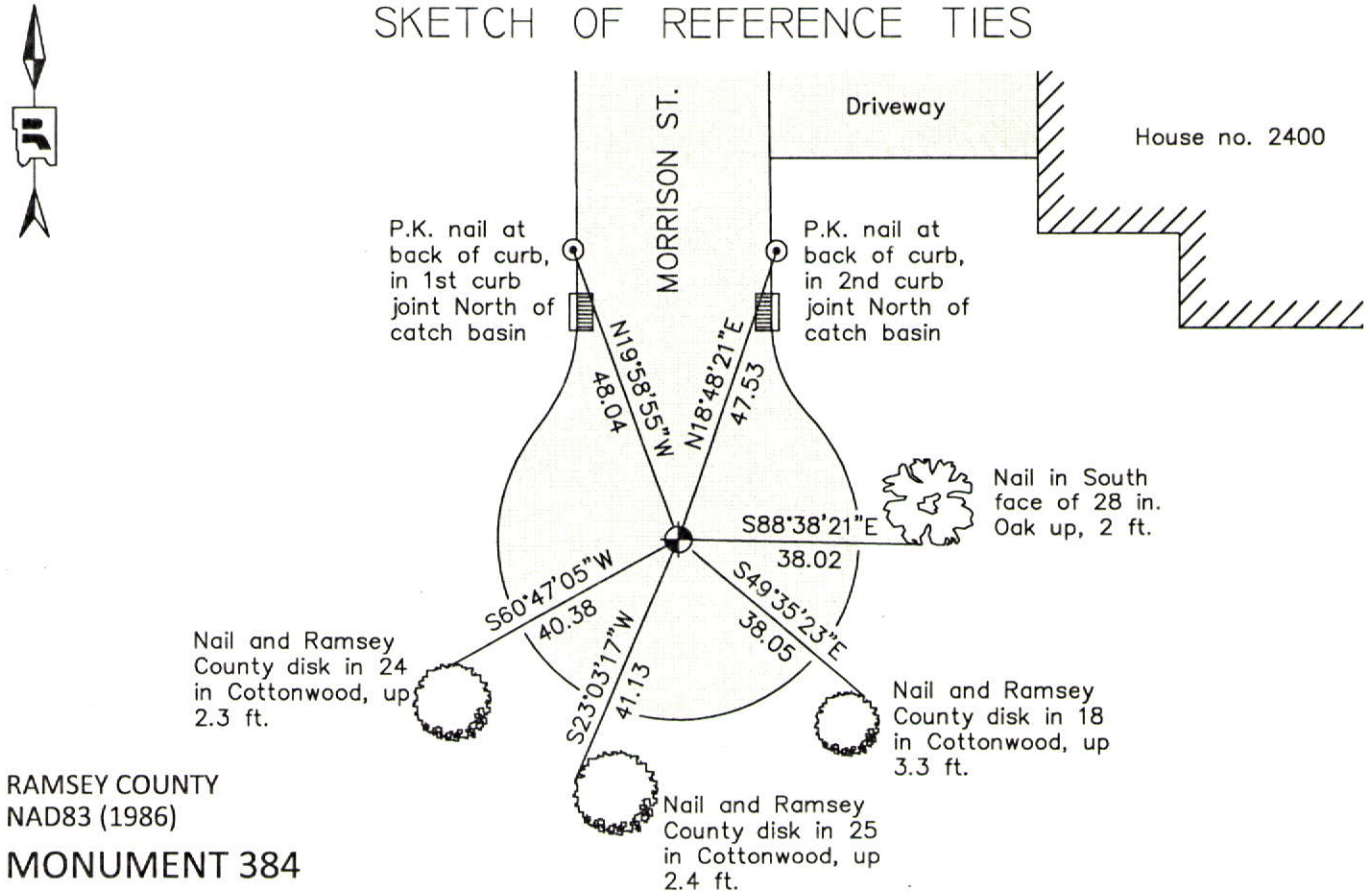
At the corner location shown on the sketch

On June 6, 2012 found a cast iron monument, flush in bituminous road.

left monument as found raised/lowered monument removed monument (explain)

On _____ placed a _____

SKETCH OF REFERENCE TIES



RAMSEY COUNTY
NAD83 (1986)
MONUMENT 384

X= 576763.816 (Easting)
Y= 181211.319 (Northing)

ALL DISTANCES ARE SHOWN IN U.S. SURVEY FEET.
BEARINGS ARE FOR TIE REFERENCE PURPOSES ONLY.

Statements of evidence relative to this corner are on the following page.

I hereby certify that this document was prepared by me or under my direct supervision and that I am a duly Licensed Land Surveyor under the laws of the State of Minnesota.

Daniel D. Baar 12-30-14
Daniel D. Baar Date
Minnesota License No. 45816

County Surveyor
 Deputy County Surveyor Land Surveyor

OFFICE OF COUNTY SURVEYOR
County of Ramsey

I hereby certify that this document was filed in the County Surveyor's office this 30th day of December, 2014.

Craig W. Hinzman
Craig W. Hinzman, L.S.
Ramsey County Surveyor

MONUMENT 384

East 1/4 Corner of Section 7, Township 29 North, Range 22 West

Set 1/4 Section post, B. Oak 16 N88°E 1.25, November 29, 1847.

The 1/4 Corner between Sections 7 and 8 was fixed by Gates A. Johnson Jr. in November 1885, and was retied in December 1896; found one Government witness stump.

Set monument, 1896.

Checked monument, March, 1939.

Checked monument, November, 1963.

Found a granite monument down 0.9 ft., 1974.

Checked monument, September 12, 1977.

Monument removed during street construction, 1987.

Placed a cast iron monument and tied, May 3, 1989.

Checked monument, August 9, 1990.

Retied monument, flush, December 30, 2002.

Retied monument, August 7, 2007.

Checked condition of cast iron monument, flush in bituminous road, and ties, June 6, 2012.