

# MONUMENT 380

## CERTIFICATE OF LOCATION OF GOVERNMENT CORNER

East Quarter Corner of Section 11, Township 29 North, Range 23 West, County of Ramsey, State of Minnesota.

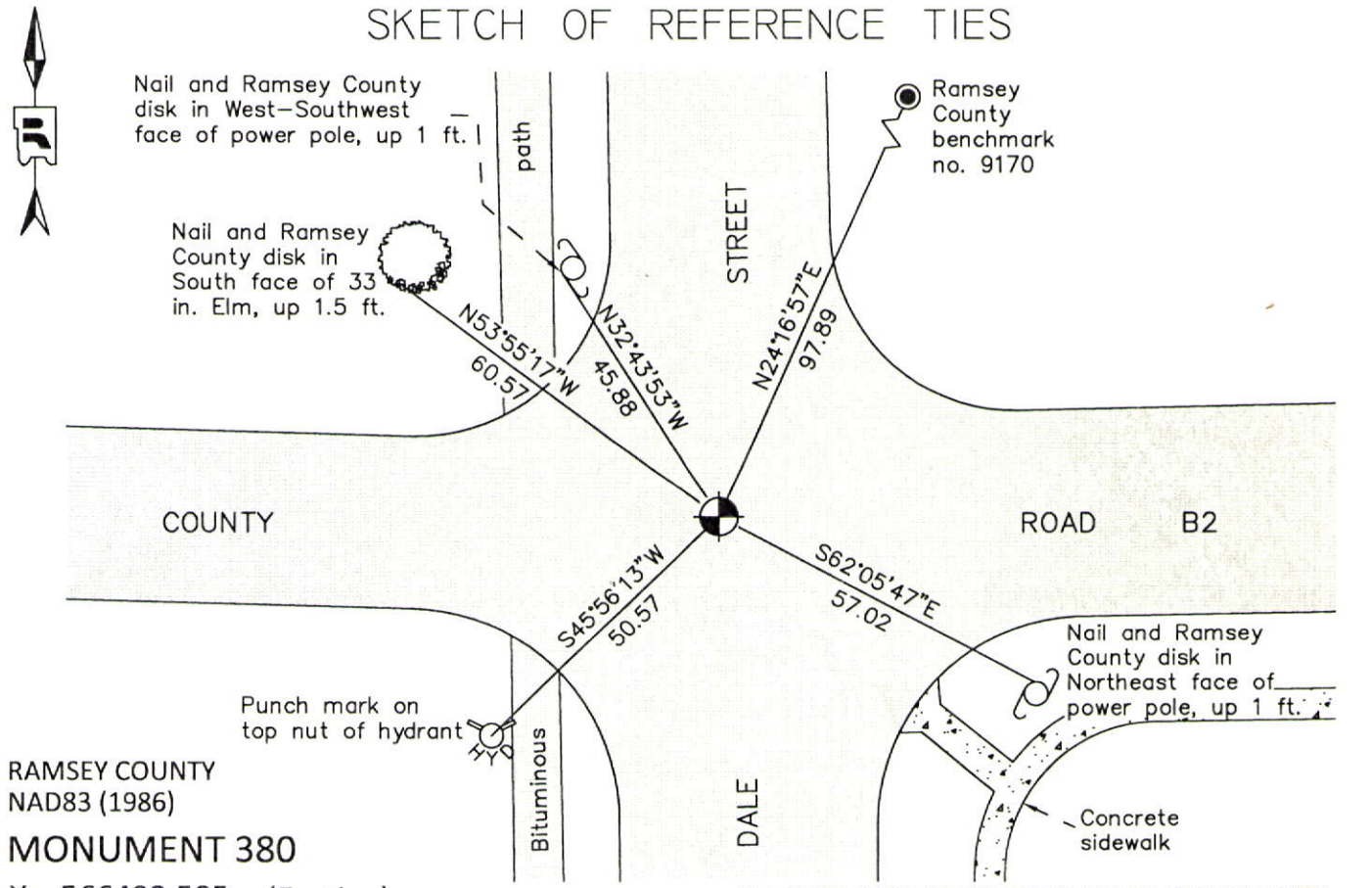
At the corner location shown on the sketch

On June 25, 2012 found a "Ramsey County" cast iron monument flush in bituminous road.

left monument as found       raised/lowered monument       removed monument (explain)

On \_\_\_\_\_ placed a \_\_\_\_\_

### SKETCH OF REFERENCE TIES



RAMSEY COUNTY  
NAD83 (1986)  
**MONUMENT 380**

X= 566493.505 (Easting)  
Y= 181142.752 (Northing)

ALL DISTANCES ARE SHOWN IN U.S. SURVEY FEET.  
BEARINGS ARE FOR TIE REFERENCE PURPOSES ONLY.

Statements of evidence relative to this corner are on the following page.

I hereby certify that this document was prepared by me or under my direct supervision and that I am a duly Licensed Land Surveyor under the laws of the State of Minnesota.

Daniel D. Baar      12-30-14  
Daniel D. Baar      Date  
Minnesota License No. 45816

- County Surveyor       Land Surveyor  
 Deputy County Surveyor

OFFICE OF COUNTY SURVEYOR  
County of Ramsey

I hereby certify that this document was filed in the County Surveyor's office this 30th day of December, 20 14.

Craig W. Hinzman  
Craig W. Hinzman, L.S.  
Ramsey County Surveyor

# MONUMENT 380

East Quarter Corner of Section 11, Township 29 North, Range 23 West

Set 1/4 Section post, Bur Oak 10 N83°W 59, "Do" (Bur Oak) 9 S62°E 88, November 3, 1847.

Replaced 1/4 Section Corner between Sections 11 and 12. This Corner was fixed when old Government witness trees were standing and retied by Gates A. Johnson Jr., County Surveyor, in 1895.

Set monument, May 1895.

Checked monument, September, 1938.

New ties, March, 1959.

REINHARDT ADDITION plat shows a granite monument at described location, October 4, 1963.

Found a granite monument down 0.2 ft. and tied, June 19, 1974.

Placed a cast iron cap and bolt monument, October 10, 1974.

Cast iron cap missing; tied out monument, August 29, 1988.

Checked monument, August 10, 1990.

Granite monument removed by Maintenance Department, July, 1991.

Relocated position and set 4 P.K. nails, September 3, 1991.

Set a 20 in. cast iron monument flush, September 4, 1991.

Tied monument, July 18, 2002.

Retied monument, August 3, 2007.

Checked condition of cast iron monument, flush in bituminous road, and ties, June 25, 2012.