

MONUMENT 372

CERTIFICATE OF LOCATION OF FOUND MONUMENT

West Quarter Corner of Section 8, Township 29 North, Range 23 West, County of Ramsey, State of Minnesota.

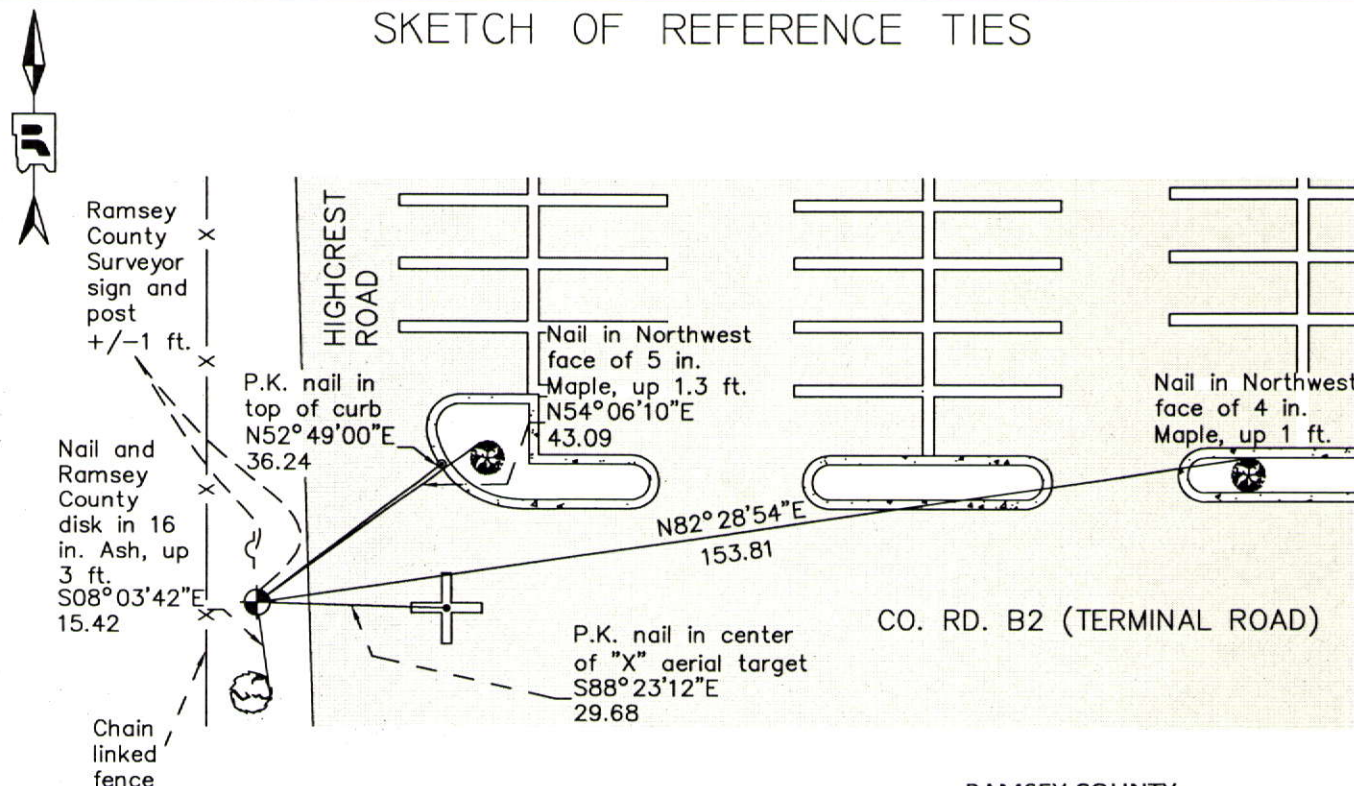
At the corner location shown on the sketch

On June 7, 2012 found a "HENNEPIN COUNTY SURVEYOR" cast iron monument, down 0.5 ft.

left monument as found raised/lowered monument removed monument (explain)

On _____ placed a _____

SKETCH OF REFERENCE TIES



RAMSEY COUNTY
NAD83 (1986)

MONUMENT 372

ALL DISTANCES ARE SHOWN IN U.S. SURVEY FEET.
BEARINGS ARE FOR TIE REFERENCE PURPOSES ONLY.

Drafted by: KJ

X= 545420.003 (Easting)
Y= 181081.333 (Northing)

Statements of evidence relative to this corner are on the following page.

I hereby certify that this document was prepared by me or under my direct supervision and that I am a duly Licensed Land Surveyor under the laws of the State of Minnesota.

Daniel D. Baar 12-31-14
Daniel D. Baar Date

Minnesota License No. 45816

- County Surveyor Land Surveyor
 Deputy County Surveyor

OFFICE OF COUNTY SURVEYOR
County of Ramsey

I hereby certify that this document was filed in the County Surveyor's office this 31st day of December, 20 14.

Craig W. Hinzman
Craig W. Hinzman, L.S.
Ramsey County Surveyor

MONUMENT 372

West Quarter Corner of Section 8, Township 29 North, Range 23 West

Set 1/4 Section post, Bur Oak 12 N73°W 57, "Do" (Bur Oak) 11 S73°E 95, November 3, 1847.

In establishing the 1/4 Corner between Sections 7 and 8, found both Government trees and also monument set by Hennepin County, tied it, September, 1899.

Located monument by Don Sandstone, January 27, 1934.

Checked monument, June, 1948.

Found a cast iron monument, 1974.

Tied monument, March 12, 1984.

Retied monument, August 13, 1990.

Placed sign and post +/-1 ft. North of monument, July 6, 1992.

Found cast iron monument down +/-1 ft. and retied, August 6, 2002.

Retied monument, August 29, 2007.

Found cast iron monument down 0.5 ft. below ground in good condition. Ties remain. Did not re-measure, May 2, 2011. (Hennepin County Surveyor)

Checked condition of "HENNEPIN COUNTY SURVEYOR" cast iron monument, down 0.5 ft., and ties, June 7, 2012.