

MONUMENT 362

CERTIFICATE OF LOCATION OF GOVERNMENT CORNER

North Quarter Corner of Section 8, Township 29 North, Range 22 West, County of Ramsey, State of Minnesota.

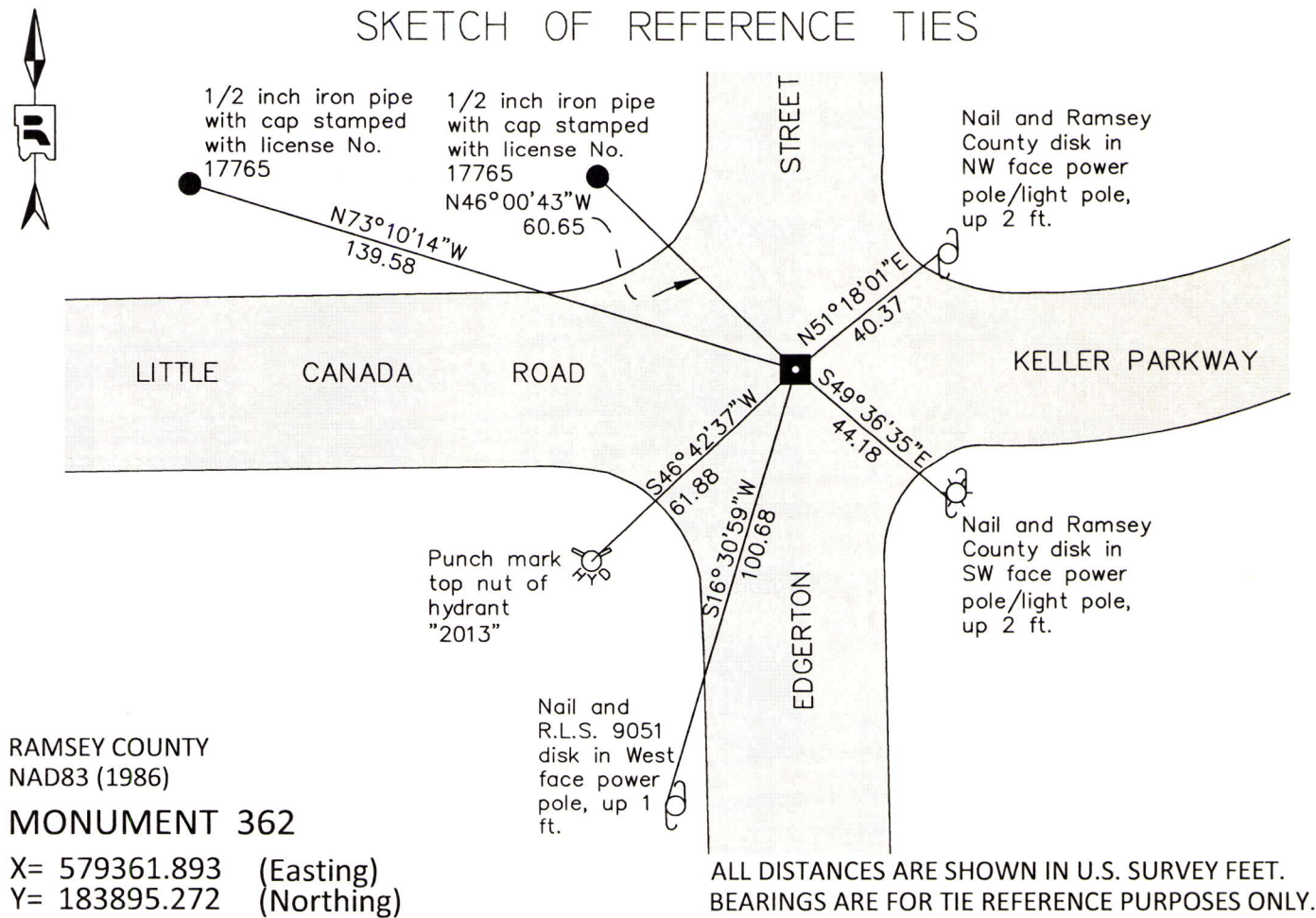
At the corner location shown on the sketch

On October 15, 2014 found a cast iron cap and bolt monument, down 0.05 ft. in bituminous road.

left monument as found raised/lowered monument removed monument (explain)

On October 15, 2014 removed cast iron cap and bolt monument. Found an 8 inch by 8 inch cut granite monument with drill hole. Installed cast iron manhole assembly over the top of said granite monument.

SKETCH OF REFERENCE TIES



Statements of evidence relative to this corner are on the following page.

I hereby certify that this document was prepared by me or under my direct supervision and that I am a duly Licensed Land Surveyor under the laws of the State of Minnesota.

Daniel D. Baar 12-18-14
Daniel D. Baar Date
Minnesota License No. 45816

County Surveyor Land Surveyor
 Deputy County Surveyor

OFFICE OF COUNTY SURVEYOR
County of Ramsey

I hereby certify that this document was filed in the County Surveyor's office this 18th day of December, 20 14.

Craig W. Hinzman
Craig W. Hinzman, L.S.
Ramsey County Surveyor

MONUMENT 362

North Quarter Corner of Section 8, Township 29 North, Range 22 West

November 29, 1847	Set 1/4 Section post, Bur Oak 14 S9°W 1.08; B. Oak 18 N65°E 1.0, Isaac Higbee, Deputy Surveyor.
June, 1895	The 1/4 Corner between Sections 5 and 8 was fixed by running up from monument at Center of Section 8, and running East on Section line North side Section 8 using sub'd stakes found and set Monument. Found old Boulder Monument at this Corner, Ramsey County Resurvey.
August 19, 1975	Found iron over granite monument, down 0.39 ft.; set short cast iron monument and tied, Ramsey County Surveyor's Office.
May 11, 1981	Checked monument, Ramsey County Surveyor's Office.
July 20, 1983	Retied monument, Ramsey County Surveyor's Office.
August 16, 1990	Retied monument, Ramsey County Surveyor's Office.
+/-1992	Short cast iron monument gone; Maintenance Department road milling project on Little Canada Road, Ramsey County Surveyor's Office.
September 8, 1994	Granite monument now down 4 in.; set a cast iron cap and bolt monument, Ramsey County Surveyor's Office.
December 9, 1999	Tied monument, Ramsey County Surveyor's Office.
June 27, 2006	Retied monument, Ramsey County Surveyor's Office.
July 5, 2011	Retied cast iron monument, down 0.05 ft. in bituminous road, Ramsey County Surveyor's Office.
October 15, 2014	Found cast iron cap and bolt monument. Removed cast iron cap and bolt monument and found an 8 inch by 8 inch cut granite monument with drill hole. Installed a cast iron manhole assembly over granite monument. Tied out granite monument, Ramsey County Surveyor's Office.