

MONUMENT 36

CERTIFICATE OF LOCATION OF GOVERNMENT CORNER

East Quarter Corner of Section 2, Township 30 North, Range 23 West, County of Ramsey, State of Minnesota.

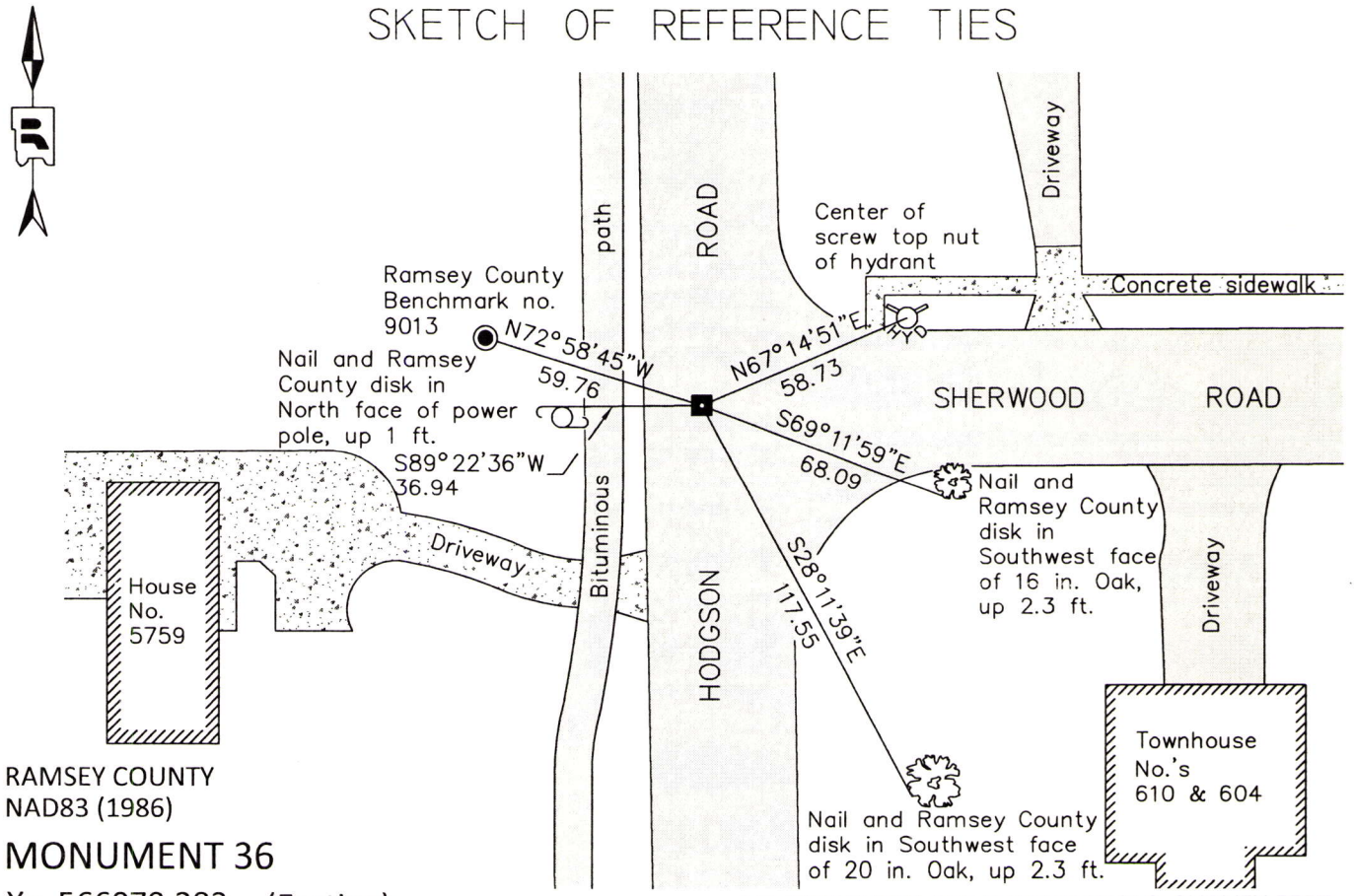
At the corner location shown on the sketch

On August 25, 2014 found a cast iron monument, down 0.25 feet, in bituminous road.

left monument as found raised/lowered monument removed monument (explain)

On August 25, 2014 Removed cast iron monument. Found an 8 inch by 8 inch granite monument down 0.7 feet. Installed a cast iron manhole assembly over granite monument; tied.

SKETCH OF REFERENCE TIES



RAMSEY COUNTY
NAD83 (1986)
MONUMENT 36

X= 566079.282 (Easting)
Y= 218356.053 (Northing)

ALL DISTANCES ARE SHOWN IN U.S. SURVEY FEET.
BEARINGS ARE FOR TIE REFERENCE PURPOSES ONLY.

Statements of evidence relative to this corner are on the following page.

I hereby certify that this document was prepared by me or under my direct supervision and that I am a duly Licensed Land Surveyor under the laws of the State of Minnesota.

Daniel D. Baar 12-18-14
Daniel D. Baar Date
Minnesota License No. 45816

County Surveyor Land Surveyor
 Deputy County Surveyor

OFFICE OF COUNTY SURVEYOR
County of Ramsey

I hereby certify that this document was filed in the County Surveyor's office this 18th day of December, 20 14.

Craig W. Hinzman
Craig W. Hinzman, L.S.
Ramsey County Surveyor

MONUMENT 36

East Quarter Corner of Section 2, Township 30 North, Range 23 West

- | | |
|-------------------|--|
| December 16, 1847 | Set 1/4 Section post, Tamarack 8 N77°E 11, "Do" (Tamarack) 10 S57°W 87, Isaac Higbee, Deputy Surveyor. |
| July 22, 1896 | In establishing the 1/4 Corner between Sections 1 and 2, found old stake at 1/4 Corner and one Government witness stump standing. Fixed Corner, Ramsey County Resurvey. |
| August 9, 1897 | Set monument, Ramsey County Resurvey. |
| December, 1943 | Checked monument, Ramsey County Engineer's Office. |
| January, 1946 | Checked monument, Ramsey County Engineer's Office. |
| March, 1952 | Checked monument, Ramsey County Engineer's Office. |
| July 24, 1975 | Found granite monument down 0.6 ft.; placed short cast iron monument, Ramsey County Surveyor's Office. |
| December 9, 1975 | Tied monument, Ramsey County Surveyor's Office. |
| July 18, 1990 | Retied monument, Ramsey County Surveyor's Office. |
| October 11, 2000 | Retied monument, down 0.2 ft, Ramsey County Surveyor's Office. |
| August 16, 2006 | Retied monument, Ramsey County Surveyor's Office. |
| October 29, 2012 | Found a cast iron monument down 0.2 ft. in bituminous road, checked condition of ties, Ramsey County Surveyor's Office. |
| May 14, 2014 | Found a cast iron monument down 0.2 ft. in bituminous road; tied monument for removal during road reconstruction, Ramsey County Surveyor's Office. |
| August 25, 2014 | Removed cast iron monument. Found granite monument down 0.7 feet. Installed cast iron manhole assembly over top of granite monument. Retied monument, Ramsey County Surveyor's Office. |