

MONUMENT 356

CERTIFICATE OF LOCATION OF GOVERNMENT CORNER

North Quarter Corner of Section 11, Township 29 North, Range 23 West, County of Ramsey, State of Minnesota.

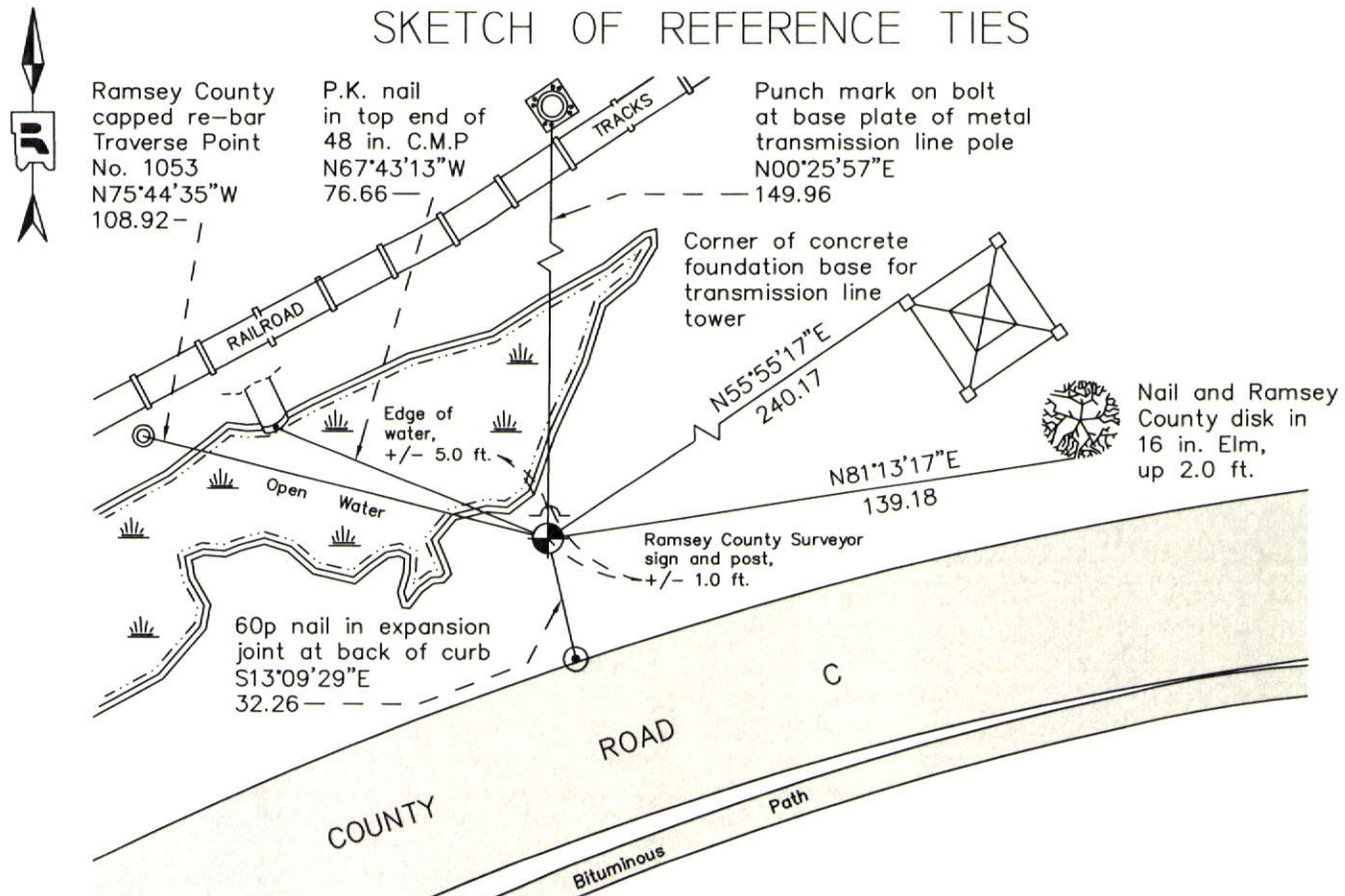
At the corner location shown on the sketch

On May 18, 2011 found a cast iron monument, flush.

left monument as found raised/lowered monument removed monument (explain)

On _____ placed a _____

SKETCH OF REFERENCE TIES



ALL DISTANCES ARE SHOWN IN U.S. SURVEY FEET.
BEARINGS ARE FOR TIE REFERENCE PURPOSES ONLY.

Statements of evidence relative to this corner are on the following page.

I hereby certify that this document was prepared by me or under my direct supervision and that I am a duly Licensed Land Surveyor under the laws of the State of Minnesota.

Daniel D. Baar 12-30-14
Daniel D. Baar Date
Minnesota License No. 45816

County Surveyor
 Deputy County Surveyor Land Surveyor

OFFICE OF COUNTY SURVEYOR
County of Ramsey

I hereby certify that this document was filed in the County Surveyor's office this 30th day of December, 20 14.

Craig W. Hinzman
Craig W. Hinzman, L.S.
Ramsey County Surveyor

MONUMENT 356

North Quarter Corner of Section 11, Township 29 North, Range 23 West

Set 1/4 Section post, B. Oak 16 N86½°E 2.28, November 3, 1847.

The 1/4 Corner between Sections 2 and 11 was fixed by J. H. Armstrong, Dec., 1896 (Section 11, Township 29 North, Range 23 West of Ramsey County Re-survey Book).

The 1/4 Cor. on South of Sec. 2 fixed by running straight from Cor. to Cor. and taking 1/2 the distance. Set Monument in Marsh, November 10, 1897 (Section 2, Township 29 North, Range 23 West of Ramsey County Re-survey Book).

Ramsey County Survey Department, Green Book "Rose", notes a cast iron monument at this location, March, 1966.

Found a cast iron monument and tied, May, 1974.

Monument checked, July 14, 1977.

Placed a sign and post +/-15 in. north of monument, October 7, 1993.

Checked monument for condition and found to be stable and in good condition. No physical features to take reference ties to, June 28, 2006.

Tied cast iron monument, flush, May 18, 2011.