

# MONUMENT 354

## CERTIFICATE OF LOCATION OF FOUND MONUMENT

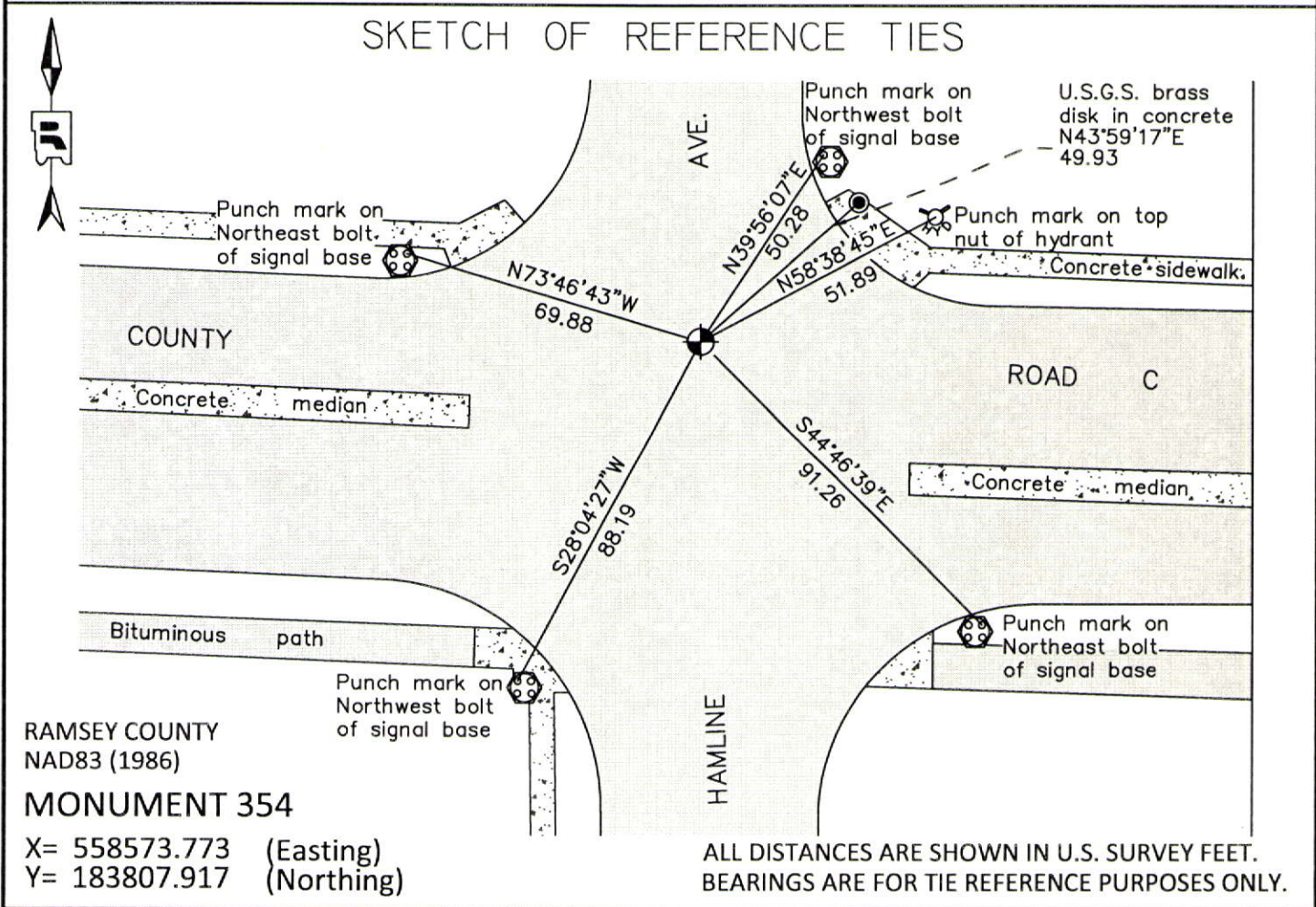
North Quarter Corner of Section 10, Township 29 North, Range 23 West, County of Ramsey, State of Minnesota.

At the corner location shown on the sketch

On June 20, 2012 found a "Ramsey County" cast iron monument within a cast iron manhole assembly.

left monument as found       raised/lowered monument       removed monument (explain)

On \_\_\_\_\_ placed a \_\_\_\_\_



Statements of evidence relative to this corner are on the following page.

I hereby certify that this document was prepared by me or under my direct supervision and that I am a duly Licensed Land Surveyor under the laws of the State of Minnesota.

Daniel D. Baar      12-31-14  
 Daniel D. Baar      Date  
 Minnesota License No. 45816

- County Surveyor       Land Surveyor  
 Deputy County Surveyor

OFFICE OF COUNTY SURVEYOR  
 County of Ramsey

I hereby certify that this document was filed in the County Surveyor's office this 31st day of December, 20 14.

Craig W. Hinzman  
 Craig W. Hinzman, L.S.  
 Ramsey County Surveyor

# MONUMENT 354

North Quarter Corner of Section 10, Township 29 North, Range 23 West

Set 1/4 Section post, B. Oak 10 S18°W 28, November 3, 1847.

The 1/4 Corner between Sections 3 and 10 was fixed from some of Gates A. Johnson's old notes when witness tree was standing. Fixed Corner, January 5, 1898.

Set monument, May 9, 1898.

Checked monument, November, 1944.

Lowered monument, August, 1952.

Found a cast iron monument flush and tied, July 23, 1974.

Checked monument, July 15, 1977.

Retied monument down +/-0.1 ft., January 10, 1991.

Retied monument, December 1, 1998.

Tied out monument for removal during road reconstruction, May 31, 2006.

Set a 20 in. cast iron monument down 10 in. within a cast iron manhole assembly, May 17, 2007.

Tied monument, August 3, 2007.

Checked condition of cast iron monument in cast iron manhole assembly and ties, June 20, 2012.