

# MONUMENT 349

## CERTIFICATE OF LOCATION OF GOVERNMENT CORNER

Southwest Corner of Section 5, Township 29 North, Range 23 West, County of Ramsey, State of Minnesota.

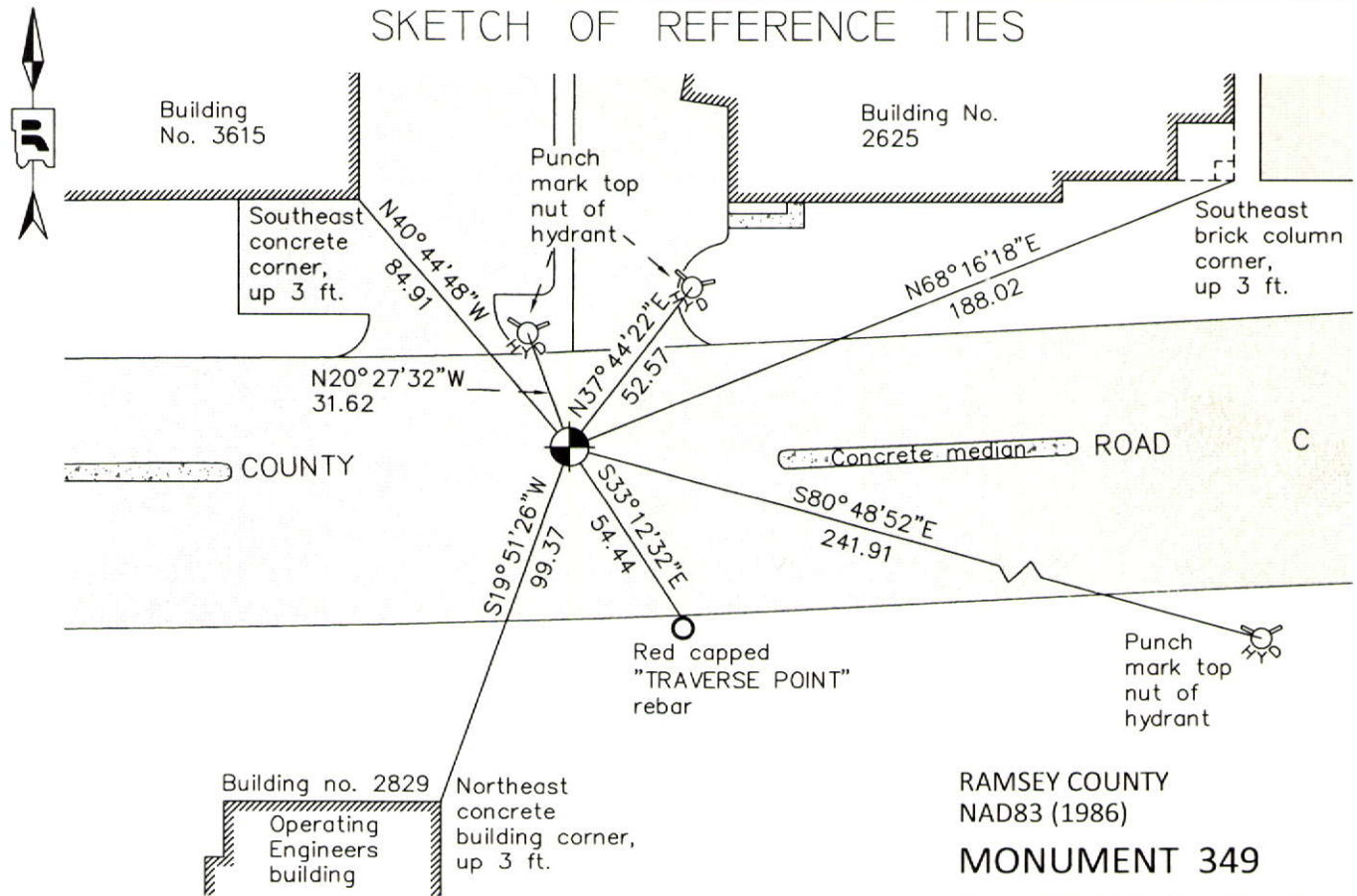
At the corner location shown on the sketch

On May 9, 2014 found cast iron monument, flush; checked ties prior to road resurfacing project.

left monument as found       raised/lowered monument       removed monument (explain)

On October 15, 2014 placed a cast iron water gate valve cover over cast iron monument.

### SKETCH OF REFERENCE TIES



ALL DISTANCES ARE SHOWN IN U.S. SURVEY FEET.  
BEARINGS ARE FOR TIE REFERENCE PURPOSES ONLY.

RAMSEY COUNTY  
NAD83 (1986)

### MONUMENT 349

X= 545393.120 (Easting)  
Y= 183719.110 (Northing)

Statements of evidence relative to this corner are on the following page.

I hereby certify that this document was prepared by me or under my direct supervision and that I am a duly Licensed Land Surveyor under the laws of the State of Minnesota.

Daniel D. Baar      12-16-14  
Daniel D. Baar      Date

Minnesota License No. 45816

- County Surveyor       Land Surveyor  
 Deputy County Surveyor

OFFICE OF COUNTY SURVEYOR  
County of Ramsey

I hereby certify that this document was filed in the County Surveyor's office this 16th day of December, 20 14.

Craig W. Hinzman  
Craig W. Hinzman, L.S.  
Ramsey County Surveyor

# MONUMENT 349

Southwest Corner of Section 5, Township 29 North, Range 23 West

November 3, 1847	Set Post Corner to Sections 5, 6, 7, & 8 (Bur Oak 11 N74°E 80; "Do" (Bur Oak) 12 N21°W 1.25). Isaac Higbee, Deputy Surveyor
Unknown Date, 1890	P.M. Dahl acting in the capacity of the Hennepin County Surveyor found a stake in the center of a road that had been set according to ties by Egan. Dahl set a sandstone monument 0.5 of a foot below the surface of the road. Dahl's Book 4, Page 59, Hennepin County Records.
December 21, 1899	Found monument at Southwest Corner of Section 5 set by Hennepin County. Ramsey County Resurvey
Unknown Date, 1937	C.E. Lewis, in conjunction with WPA resurvey program initiated by Hennepin County, found a 3/4 inch iron pipe in the center of 29th Avenue using old ties. Lewis set a concrete monument 8 inches down. WPA field notes for T29 R23, Hennepin County Records
July 31, 1956	Granite monument flush in centerline of east and west road Hennepin County Surveyor's Office
September 30, 1964	Checked monument and found O.K. Additional ties taken. Hennepin County Surveyor's Office
September 22, 1969	Checked ties. Hennepin County Surveyor's Office
August, 1975	Found granite monument flush. Ramsey County Surveyor's Office
December 12, 1975	Monument O.K. Hennepin County Surveyor's Office
Unknown Date, 1979	Monument destroyed by construction. Ramsey County Surveyor's Office
Unknown Date, 1981	Replaced cast iron monument and tied. Ramsey County Surveyor's Office
January 16, 1991	Monument checked. Ramsey County Surveyor's Office
January 24, 1992	Found C.I.M. even with blacktop in good condition. Existing ties fit well. Retied. Hennepin County Surveyor's Office
June 25, 1998	Found cast iron monument even with concrete road in good condition. Existing ties fit reasonably well. Retied. Hennepin County Surveyor's Office
March 28, 2001	Retied monument in the inner west bound lane. Ramsey County Surveyor's Office

# MONUMENT 349

Southwest Corner of Section 5, Township 29 North, Range 23 West

April 3, 2002	Found Cast Iron Monument even with surface of concrete road in good condition. Existing ties fit reasonably well. Retied. Hennepin County Surveyor's Office
June 27, 2006	Retied monument. Ramsey County Surveyor's Office
August 8, 2006	Found cast iron monument even with surface of concrete, road in good condition. All ties exist, did not remeasure. Hennepin County Surveyor's Office
July 6, 2011	Retied cast iron monument, flush. Ramsey County Surveyor's Office
May 9, 2014	Found cast iron monument, flush. Checked the ties and offset the monument prior to road resurfacing project. Ramsey County Surveyor's Office
October 15, 2014	Placed a cast iron water gate valve cover over cast iron monument during road resurfacing project. Ramsey County Surveyor's Office