

MONUMENT 337

CERTIFICATE OF LOCATION OF FOUND MONUMENT

Center of Section 6, Township 29 North, Range 22 West, County of Ramsey, State of Minnesota.

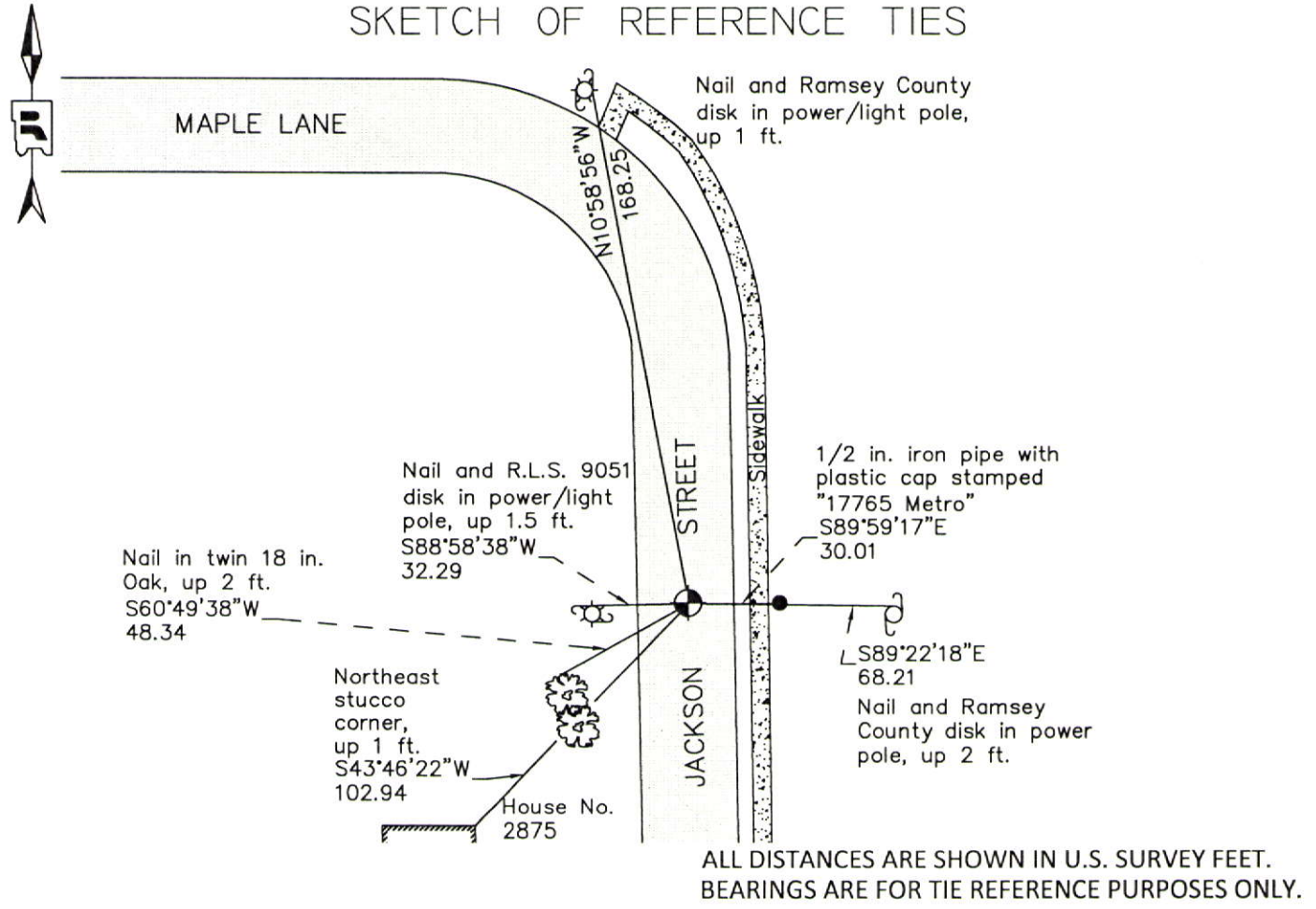
At the corner location shown on the sketch

On July 12, 2011 found a cast iron monument, down 0.02 ft. in bituminous road.

left monument as found raised/lowered monument removed monument (explain)

On _____ placed a _____

SKETCH OF REFERENCE TIES



Statements of evidence relative to this corner are on the following page.

I hereby certify that this document was prepared by me or under my direct supervision and that I am a duly Licensed Land Surveyor under the laws of the State of Minnesota.

Daniel D. Baar 12-30-14
Daniel D. Baar Date

Minnesota License No. 45816

- County Surveyor Land Surveyor
 Deputy County Surveyor

OFFICE OF COUNTY SURVEYOR
County of Ramsey

I hereby certify that this document was filed in the County Surveyor's office this 30th day of December, 20 14.

Craig W. Hinzman
Craig W. Hinzman, L.S.
Ramsey County Surveyor

MONUMENT 337

Center of Section 6, Township 29 North, Range 22 West

The Center of Section 6 fixed by intersection and tied, June 2, 1898.

Set Monument, June 22, 1898.

Found cast iron monument broke off; replaced with a new cast iron monument, flush and tied, August 16, 1974 (The origin of the cast iron monument has not been determined).

Checked monument, September 12, 1977.

Retied monument, November 27, 1990.

Relocated position, April 20, 1995.

Set a 20 in. cast iron monument, 1995.

Tied monument, July 31, 1998.

Retied monument, June 27, 2006.

Placed concrete around monument, August 10, 2006.

Retied a cast iron monument, down 0.02 ft. in bituminous road, July 12, 2011.