

MONUMENT 329

CERTIFICATE OF LOCATION OF SECTION SUBDIVISION MONUMENT

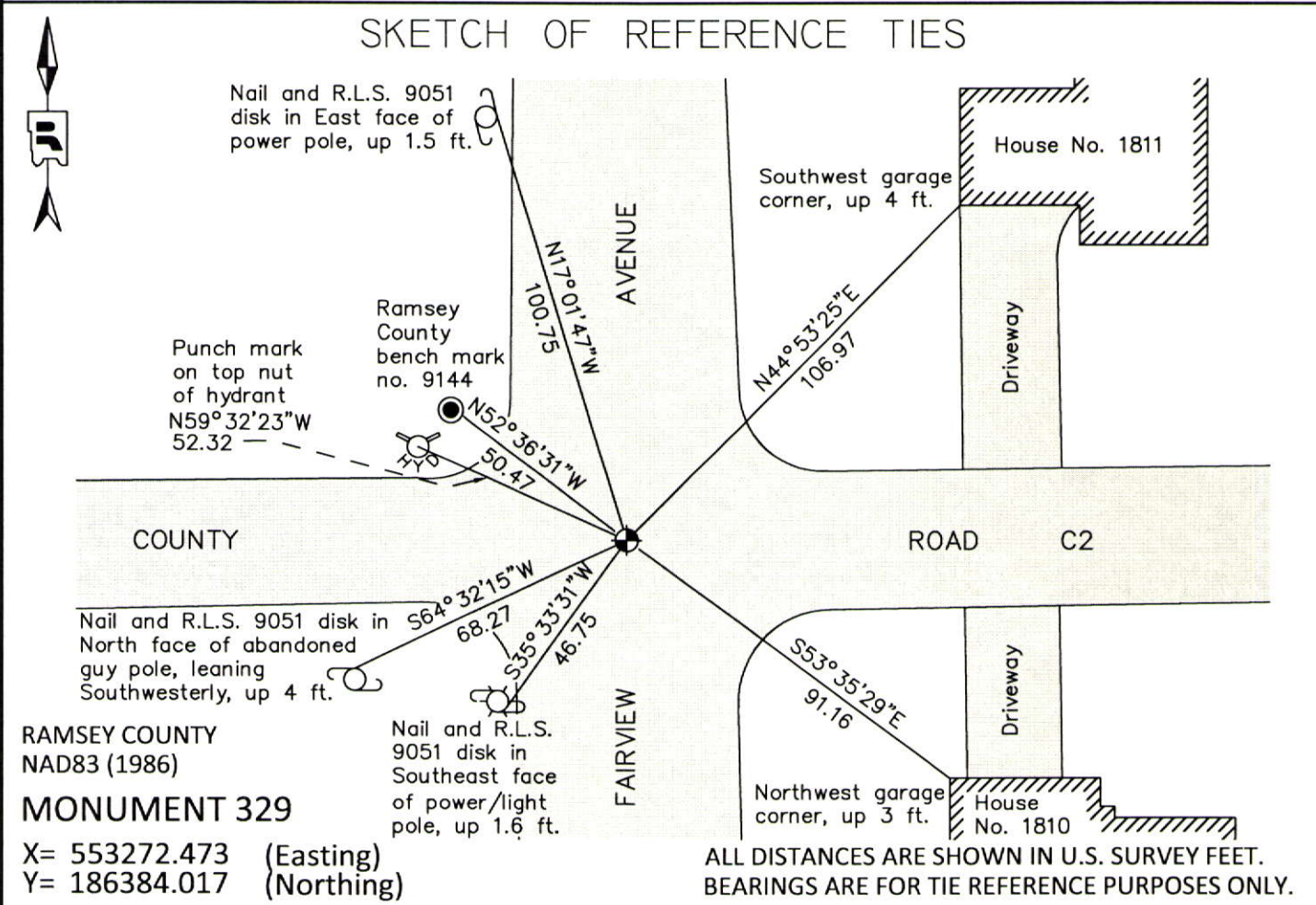
Center of Section 4, Township 29 North, Range 23 West, County of Ramsey, State of Minnesota.

At the corner location shown on the sketch

On June 7, 2012 found a "RAMSEY COUNTY" cast iron monument in bituminous road,
down 0.25 ft.

left monument as found
 raised/lowered monument
 removed monument (explain)

On _____ placed a _____



Statements of evidence relative to this corner are on the following page.

I hereby certify that this document was prepared by me or under my direct supervision and that I am a duly Licensed Land Surveyor under the laws of the State of Minnesota.

Daniel D. Baar 12-30-14
 Daniel D. Baar Date
 Minnesota License No. 45816

County Surveyor
 Deputy County Surveyor Land Surveyor

OFFICE OF COUNTY SURVEYOR
 County of Ramsey

I hereby certify that this document was filed in the County Surveyor's office this 30th day of December, 20 14.

Craig W. Hinzman
 Craig W. Hinzman, L.S.
 Ramsey County Surveyor

MONUMENT 329

Center of Section 4, Township 29 North, Range 23 West

The Center of Section 4 was fixed January 12, 1897.

Set monument, May, 1897.

Found granite monument down 1 in. and tied, July 23, 1974.

Granite monument removed by road construction. Replaced with a cast iron monument, May 8, 1975.

Tied monument, August 14, 1990.

Retied monument, July 16, 2002.

Retied monument, August 2, 2007.

Checked condition of cast iron monument, down 0.25 ft., and ties, June 7, 2012.