

# MONUMENT 328

## CERTIFICATE OF LOCATION OF FOUND MONUMENT

East Quarter Corner of Section 5, Township 29 North, Range 23 West, County of Ramsey, State of Minnesota.

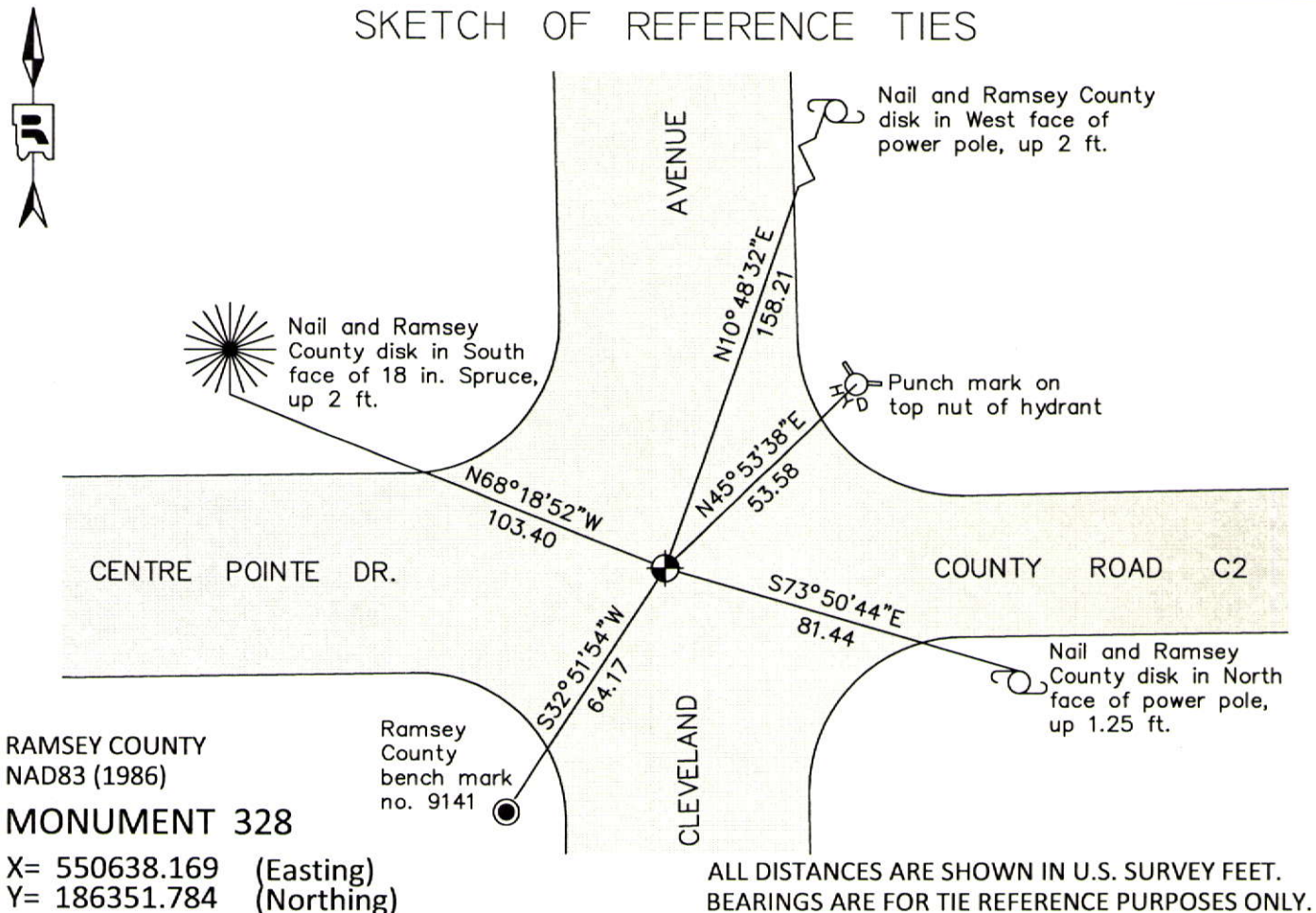
At the corner location shown on the sketch

On July 13, 2012 found a "Ramsey County" cast iron monument, down 0.1 ft. in bituminous road.

left monument as found       raised/lowered monument       removed monument (explain)

On \_\_\_\_\_ placed a \_\_\_\_\_

### SKETCH OF REFERENCE TIES



Statements of evidence relative to this corner are on the following page.

I hereby certify that this document was prepared by me or under my direct supervision and that I am a duly Licensed Land Surveyor under the laws of the State of Minnesota.

Daniel D. Baar      12-31-14  
 Daniel D. Baar      Date

Minnesota License No. 45816

- County Surveyor       Land Surveyor  
 Deputy County Surveyor

OFFICE OF COUNTY SURVEYOR  
 County of Ramsey

I hereby certify that this document was filed in the County Surveyor's office this 31st day of December, 20 14.

Craig W. Hinzman  
 Craig W. Hinzman, L.S.  
 Ramsey County Surveyor

## MONUMENT 328

East Quarter Corner of Section 5, Township 29 North, Range 23 West

The 1/4 Corner between Sections 4 and 5 is in Wilson Lake, November, 1896.

Found miscellaneous iron, 1974.

Found a granite monument down 1.6 ft. (not the same position as iron),  
October 31, 1975.

Placed a cast iron monument, November 5, 1975.

Tied monument, January 29, 1976.

Monument destroyed by construction, 1978.

Reset cast iron monument, March, 1981.

Tied monument, August 14, 1990.

Tied out monument for removal for road milling project, September 18, 1996.

Set a 20 in. cast iron monument, August 29, 1997.

Tied monument, July 15, 2002.

Retied monument, August 2, 2007.

Retied cast iron monument down 0.1 ft., July 13, 2012.