

MONUMENT 324

CERTIFICATE OF LOCATION OF GOVERNMENT CORNER

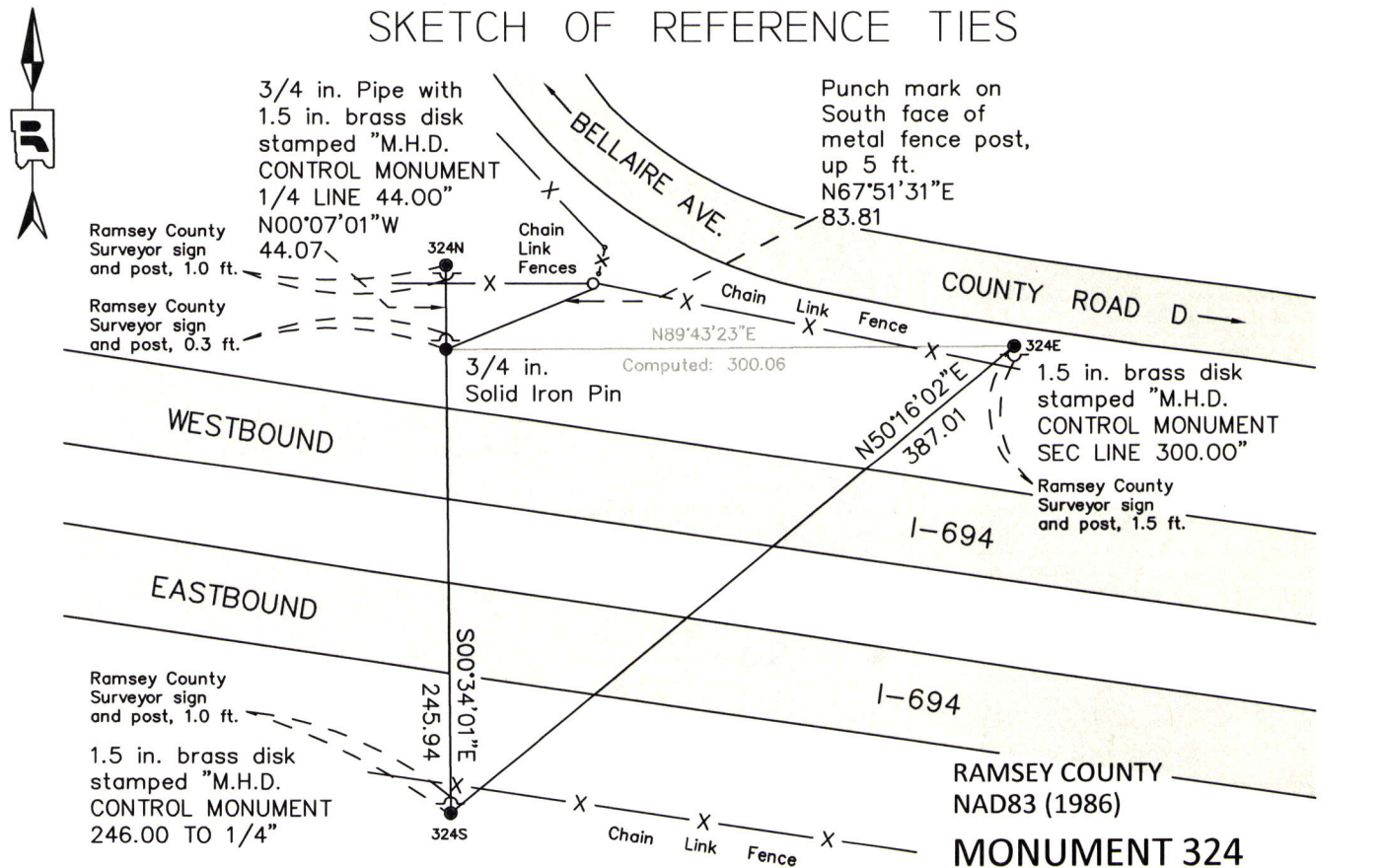
North Quarter Corner of Section 1, Township 29 North, Range 22 West, County of Ramsey, State of Minnesota.

At the corner location shown on the sketch

On August 12, 2011 found a 3/4 in. solid iron pin, down 0.2 ft.

left monument as found raised/lowered monument removed monument (explain)

On _____ placed a _____



ALL DISTANCES ARE SHOWN IN U.S. SURVEY FEET.
BEARINGS ARE FOR TIE REFERENCE PURPOSES ONLY.

X= 600403.311 (Easting)
Y= 189452.575 (Northing)

Statements of evidence relative to this corner are on the following page.

I hereby certify that this document was prepared by me or under my direct supervision and that I am a duly Licensed Land Surveyor under the laws of the State of Minnesota.

Daniel D. Baar 4-7-14
Daniel D. Baar Date
Minnesota License No. 45816

County Surveyor Land Surveyor
 Deputy County Surveyor

OFFICE OF COUNTY SURVEYOR
County of Ramsey

I hereby certify that this document was filed in the County Surveyor's office this 7th day of April, 2014.

Craig W. Hinzman
Craig W. Hinzman, L.S.
Ramsey County Surveyor

MONUMENT 324

North Quarter Corner of Section 1, Township 29 North, Range 22 West

West between Sec. 1 & 36. Set post at Qr. Sec. Corner, B. Oak 15 S85°E 79,
B. Oak 8 S15°W 20, October 15, 1847.

In establishing the 1/4 Corner on the North of Section 1, found one old Government
witness stump, set monument July 20, 1898.

Mn/DOT set a 3/4 in. iron to replace the granite monument that they tied out prior to
construction, August, 1970.

Found a 3/4 in. solid iron set by Mn/DOT, no date given in field book.

Tied and placed sign on post, June 15, 1990.

Retied, September 21, 1999.

Retied a 3/4 in. solid iron pin, down +/-0.2 ft., August 12, 2011.