

MONUMENT 302

CERTIFICATE OF LOCATION OF GOVERNMENT CORNER

South Quarter Corner of Section 31, Township 30 North, Range 23 West, County of Ramsey, State of Minnesota.

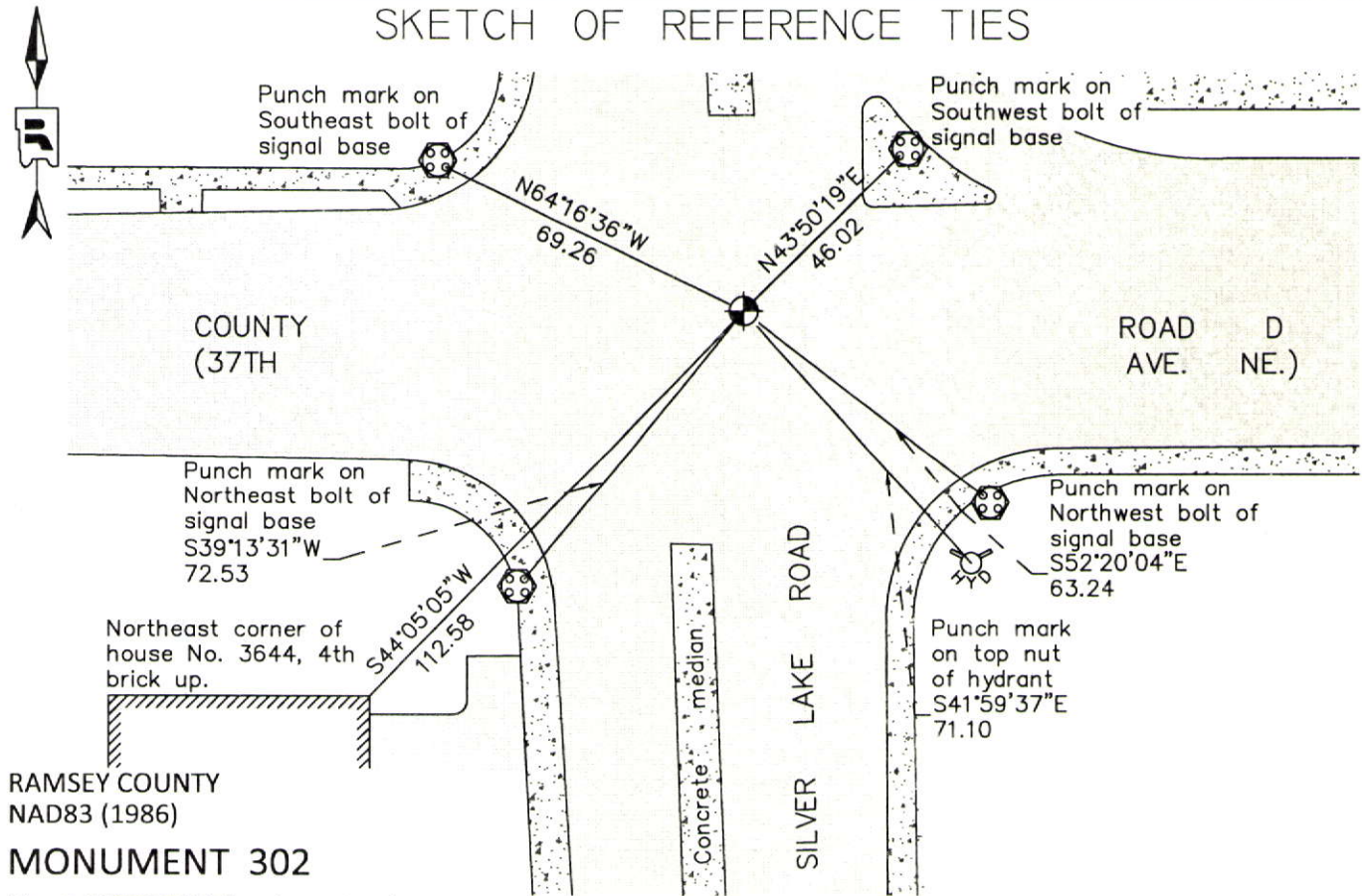
At the corner location shown on the sketch

On July 31, 2012 found a "Ramsey County" cast iron monument within a cast iron manhole assembly.

left monument as found raised/lowered monument removed monument (explain)

On _____ placed a _____

SKETCH OF REFERENCE TIES



RAMSEY COUNTY
NAD83 (1986)
MONUMENT 302

X= 542676.986 (Easting)
Y= 189225.398 (Northing)

ALL DISTANCES ARE SHOWN IN U.S. SURVEY FEET.
BEARINGS ARE FOR TIE REFERENCE PURPOSES ONLY.

Statements of evidence relative to this corner are on the following page.

I hereby certify that this document was prepared by me or under my direct supervision and that I am a duly Licensed Land Surveyor under the laws of the State of Minnesota.

Daniel D. Baar 12-30-14
Daniel D. Baar Date
Minnesota License No. 45816

County Surveyor Land Surveyor
 Deputy County Surveyor

OFFICE OF COUNTY SURVEYOR
County of Ramsey

I hereby certify that this document was filed in the County Surveyor's office this 30th day of December, 20 14.

Craig W. Hinzman
Craig W. Hinzman, L.S.
Ramsey County Surveyor

MONUMENT 302

South Quarter Corner of Section 31, Township 30 North, Range 23 West

Set post at qr. Section Corner, Wht. Oak 24 S5°E 27, Wht. Oak 20 N60°W 50, October 17, 1847.

Found monument at the 1/4 Corner on the South of Section 31, set by Hennepin County; retied corner, September 15, 1898.

Iron was established by Berthieum, 1932.

Checked monument, November, 1943.

New ties, March, 1960.

Found a cast iron monument flush, 1974.

Checked monument, May 9, 1977.

Monument removed for construction of Co. Rd. D, 1984.

Replaced with a 20 in. cast iron monument, 1985.

Tied out monument with Geod. 140, May 16, 1990.

Retied monument, November 8, 2002.

Reset 20 in. cast iron monument, down 1 ft., and placed a cast iron manhole assembly over monument, July 26, 2005.

Tied out monument, July 31, 2007.

Found cast iron monument in casting 0.9 ft. below bituminous road surface in good condition; did not remeasure ties, May 2, 2011. (Hennepin County Surveyor)

Retied a "Ramsey County" cast iron monument in a cast iron manhole assembly, July 31, 2012.