

# MONUMENT 301

## CERTIFICATE OF LOCATION OF GOVERNMENT CORNER

Southwest Corner of Section 31, Township 30 North, Range 23 West, County of Ramsey, State of Minnesota.

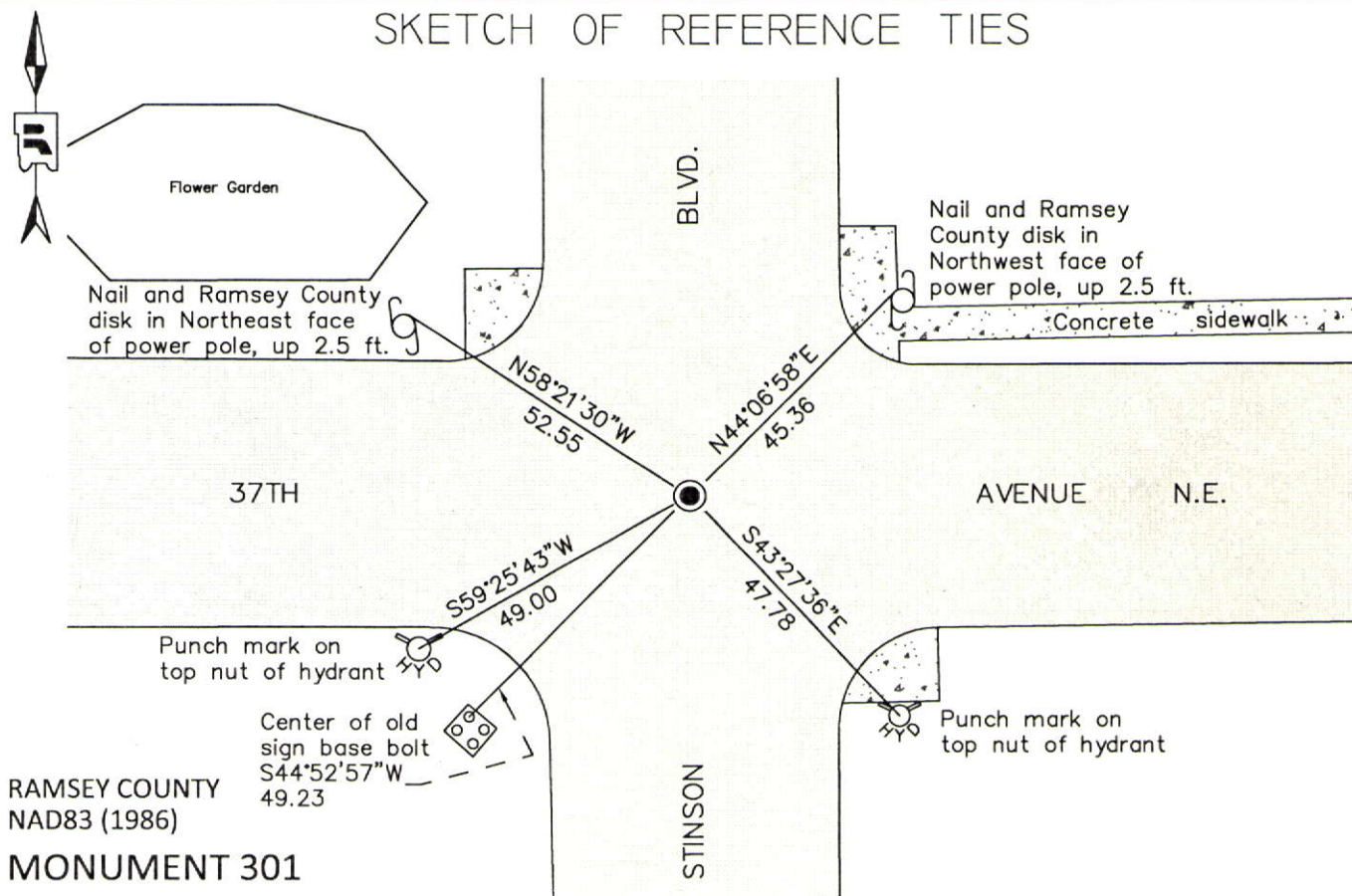
At the corner location shown on the sketch

On June 4, 2012 found a disk with "X" mark +/-0.5 ft. below finished grade, concrete roadway.

left monument as found       raised/lowered monument       removed monument (explain)

On \_\_\_\_\_ placed a \_\_\_\_\_

### SKETCH OF REFERENCE TIES



RAMSEY COUNTY  
NAD83 (1986)

### MONUMENT 301

X= 540434.838 (Easting)  
Y= 189209.678 (Northing)

ALL DISTANCES ARE SHOWN IN U.S. SURVEY FEET.  
BEARINGS ARE FOR TIE REFERENCE PURPOSES ONLY.

Statements of evidence relative to this corner are on the following page.

I hereby certify that this document was prepared by me or under my direct supervision and that I am a duly Licensed Land Surveyor under the laws of the State of Minnesota.

Daniel D. Baar      12-30-14  
Daniel D. Baar      Date  
Minnesota License No. 45816

- County Surveyor       Land Surveyor  
 Deputy County Surveyor

OFFICE OF COUNTY SURVEYOR  
County of Ramsey

I hereby certify that this document was filed in the County Surveyor's office this 30th day of December, 20 14.

Craig W. Hinzman  
Craig W. Hinzman, L.S.  
Ramsey County Surveyor

# MONUMENT 301

Southwest Corner of Section 31, Township 30 North, Range 23 West

Set post for corner to Townships 29 & 30 N., Ranges 23 & 24 W., Br. Oak 21 N85°E 32, Br. Oak 15 S51°E 101, B. Oak 13 N59°W 39, Br. Oak 13 S2°W 34, October 17, 1847.

In establishing the Southwest Corner of Section 31, found 2 Government stumps, September 16, 1898.

Set monument November, 1899.

The described corner was evidenced by a brass plug and to perpetuate the location of said corner, at the exact location thereof, a permanent marker was placed consisting of the same brass plug in concrete (down 1'), April 10, 1943. (Anoka County Surveyor)

Checked monument, November, 1943.

Checked monument, December, 1946.

Found brass cap monument in place, in tube below pavement grade, 1975.

Checked monument May 9, 1977.

Tied monument, May 16, 1990.

Tied monument, (hard to see, on south edge of monument assembly), November 8, 2002.

Retied monument, July 31, 2007.

The said permanent marker (brass plug in concrete) was found and the ties were updated, September 30, 2008. (Anoka County Surveyor)

Found Minneapolis City Control Monument 1007 down 0.5' below conc road surface in good condition. Took one add'l tie., October 7, 2009. (Hennepin County Surveyor)

Retied disk with "X" on top, down +/- 0.5 ft. in concrete roadway, June 4, 2012.