

# MONUMENT 28

## CERTIFICATE OF LOCATION OF GOVERNMENT CORNER

East Quarter Corner of Section 6, Township 30 North, Range 23 West, County of Ramsey, State of Minnesota.

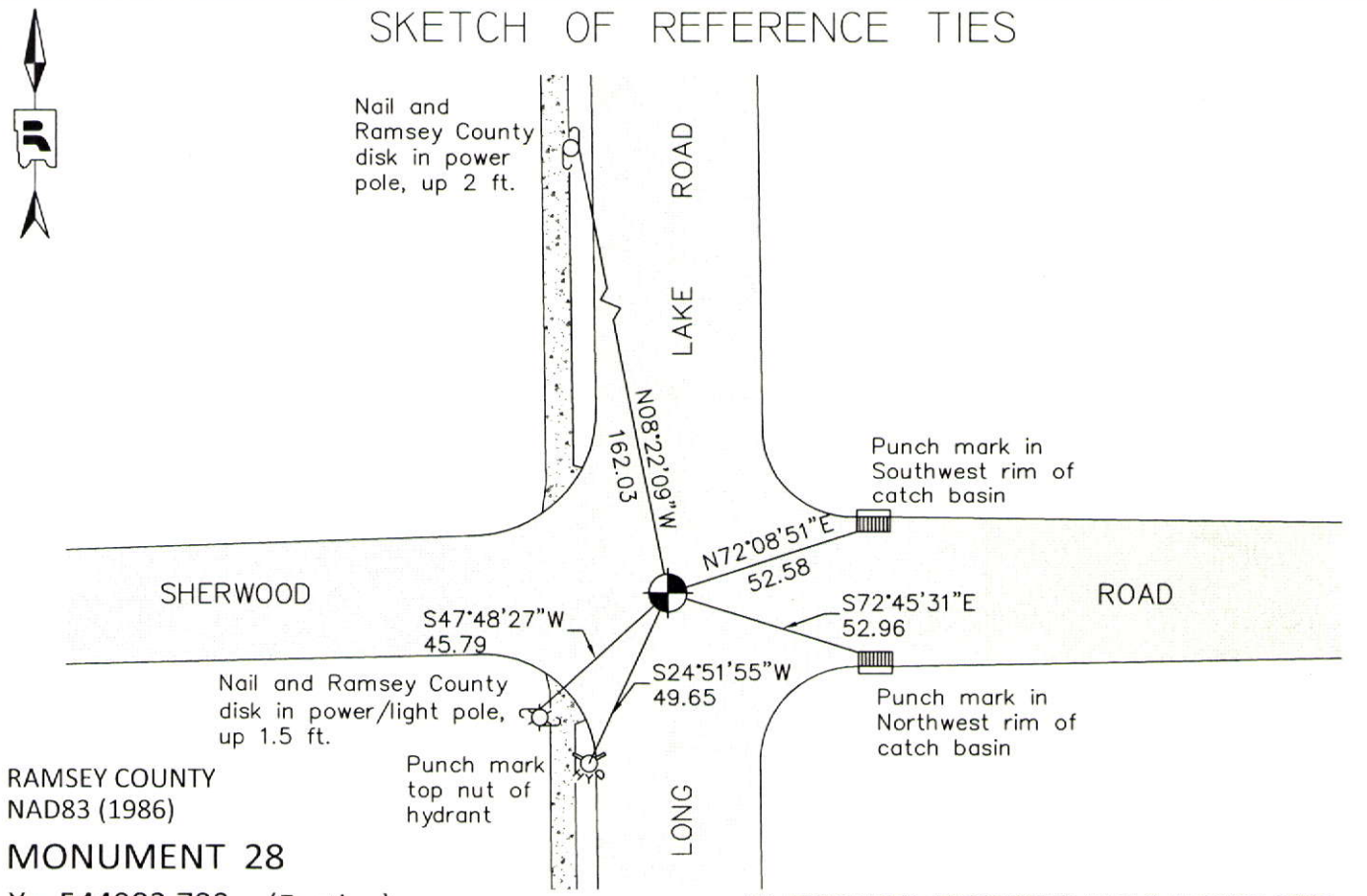
At the corner location shown on the sketch

On August 3, 2011 found a cast iron monument, flush.

left monument as found       raised/lowered monument       removed monument (explain)

On \_\_\_\_\_ placed a \_\_\_\_\_

### SKETCH OF REFERENCE TIES



RAMSEY COUNTY  
NAD83 (1986)  
**MONUMENT 28**

X= 544983.780 (Easting)  
Y= 218257.589 (Northing)

ALL DISTANCES ARE SHOWN IN U.S. SURVEY FEET.  
BEARINGS ARE FOR TIE REFERENCE PURPOSES ONLY.

Statements of evidence relative to this corner are on the following page.

I hereby certify that this document was prepared by me or under my direct supervision and that I am a duly Licensed Land Surveyor under the laws of the State of Minnesota.

Daniel D. Baar      12-30-14  
Daniel D. Baar      Date  
Minnesota License No. 45816

County Surveyor       Land Surveyor  
 Deputy County Surveyor

OFFICE OF COUNTY SURVEYOR  
County of Ramsey

I hereby certify that this document was filed in the County Surveyor's office this 30th day of December, 20 14.

Craig W. Hinzman  
Craig W. Hinzman, L.S.  
Ramsey County Surveyor

## MONUMENT 28

East Quarter Corner of Section 6, Township 30 North, Range 23 West

Set 1/4 Section post, Bur Oak 12 S88°W 76; Do (Bur Oak) 7 East 84;  
December 14, 1847.

In establishing the 1/4 Corner between Sections 5 and 6, prorated N. and S. and fixed  
1/4 Corner, no Government trees, monument set, January 20, 1903.

Granite monument shown at this location on WOODLAWN TERRACE plat,  
July 13, 1940.

Granite monument shown at this location on LAPORT MEADOWS plat,  
October 13, 1941.

Checked monument, November, 1943.

Checked monument, January, 1945.

Checked monument, November, 1950.

Checked monument, March, 1952.

Found cast iron monument, flush and tied, August 8, 1974.

Retied monument, November 21, 1991.

Removed by construction, no date in field book.

Located monument position and tied, August 1, 1994.

Set 20 in. cast iron monument, August 9, 1994.

Tied monument, December 14, 1998.

Retied monument, August 18, 2006.

Retied cast iron monument, flush, August 3, 2011.