

MONUMENT 279E

CERTIFICATE OF LOCATION OF SECTION SUBDIVISION MONUMENT

The East Center Sixteenth Corner of Section 32, Township 30 North, Range 23 West,
County of Ramsey, State of Minnesota.

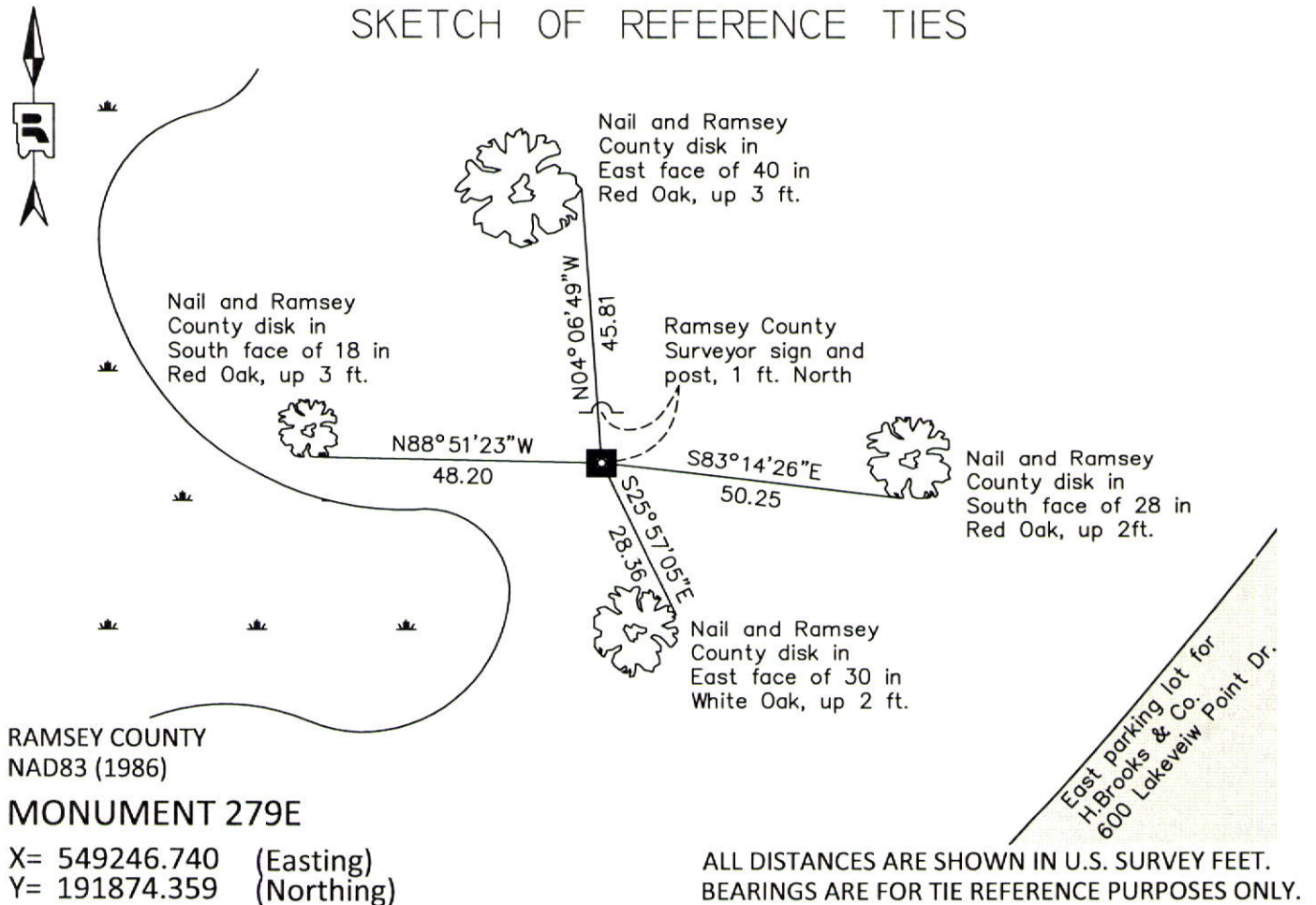
At the corner location shown on the sketch

On August 17, 2012 found an 8 in. by 8 in granite monument, with a drill hole, up 0.2 ft.

left monument as found raised/lowered monument removed monument (explain)

On _____ placed a _____

SKETCH OF REFERENCE TIES



Statements of evidence relative to this corner are on the following page.

I hereby certify that this document was prepared by me or under my direct supervision and that I am a duly Licensed Land Surveyor under the laws of the State of Minnesota.

Daniel D. Baar 12-30-14
Daniel D. Baar Date
Minnesota License No. 45816

- County Surveyor Land Surveyor
 Deputy County Surveyor

OFFICE OF COUNTY SURVEYOR
County of Ramsey

I hereby certify that this document was filed in the County Surveyor's office this 30th day of December, 20 14.

Craig W. Hinzman
Craig W. Hinzman, L.S.
Ramsey County Surveyor

MONUMENT 279E

The East Center Sixteenth Corner of Section 32, Township 30 North, Range 23 West

Ramsey County Re-Survey Map shows a monument set at this location, +/-1897.

Checked monument, December, 1946.

Checked monument, April, 1963.

Found an 8 in. by 8 in. granite monument with a drill hole, up 0.2 ft. Placed a Ramsey County Surveyor Sign and post +/-1 ft. North of monument; tied, August 17, 2012.