

MONUMENT 275

CERTIFICATE OF LOCATION OF GOVERNMENT CORNER

Northeast Corner of Section 36, Township 30 North, Range 22 West, County of Ramsey, State of Minnesota.

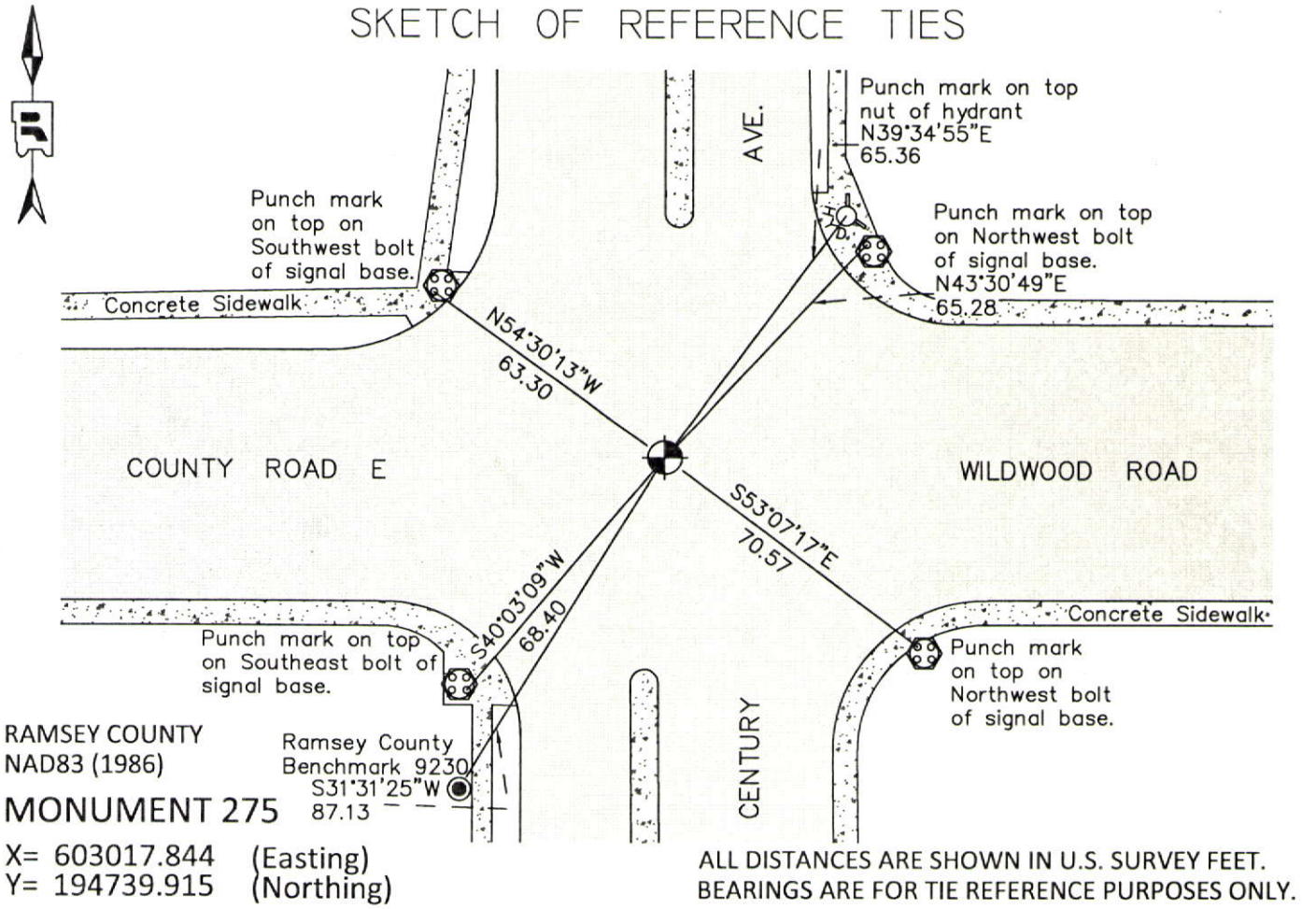
At the corner location shown on the sketch

On July 17, 2012 found a cast iron monument, within a cast iron manhole assembly.

left monument as found raised/lowered monument removed monument (explain)

On _____ placed a _____

SKETCH OF REFERENCE TIES



MONUMENT 275

Northeast Corner of Section 36, Township 30 North, Range 22 West

Set post at Corner to Sections 25, 30, 31, & 36, Wht. Oak 12 S3-1/4°E 317, B. Oak 15 N22°E 149, B. Oak 8 N49°W 133, October 19, 1847.

The Northeast Corner of Section 36, found two Government witness stumps and old stake; tied it and set monument, September 26, 1897.

Checked monument, October, 1939; February, 1946; March, 1958; October, 1959; April, 1970.

Found 1.5 in. solid iron, May 15, 1975.

Pulled iron, dug down +/-4 ft., found nothing. Placed a cast iron monument, May 19, 1976. See "Survey Book No. 1", page 65. (See Page 3 of 4)

Found cast iron monument broken off. Dug out and set 4 P.K. nails and checked location as per traverse work in book "White Bear", page 1, December 7, 1983. (See Page 4 of 4)

Placed cast iron monument, December 12, 1983.

Monument destroyed by construction; replaced with a 20 in. cast iron monument, May, 1988.

Tied out monument, July 17, 1989.

Retied monument, September 22, 1999.

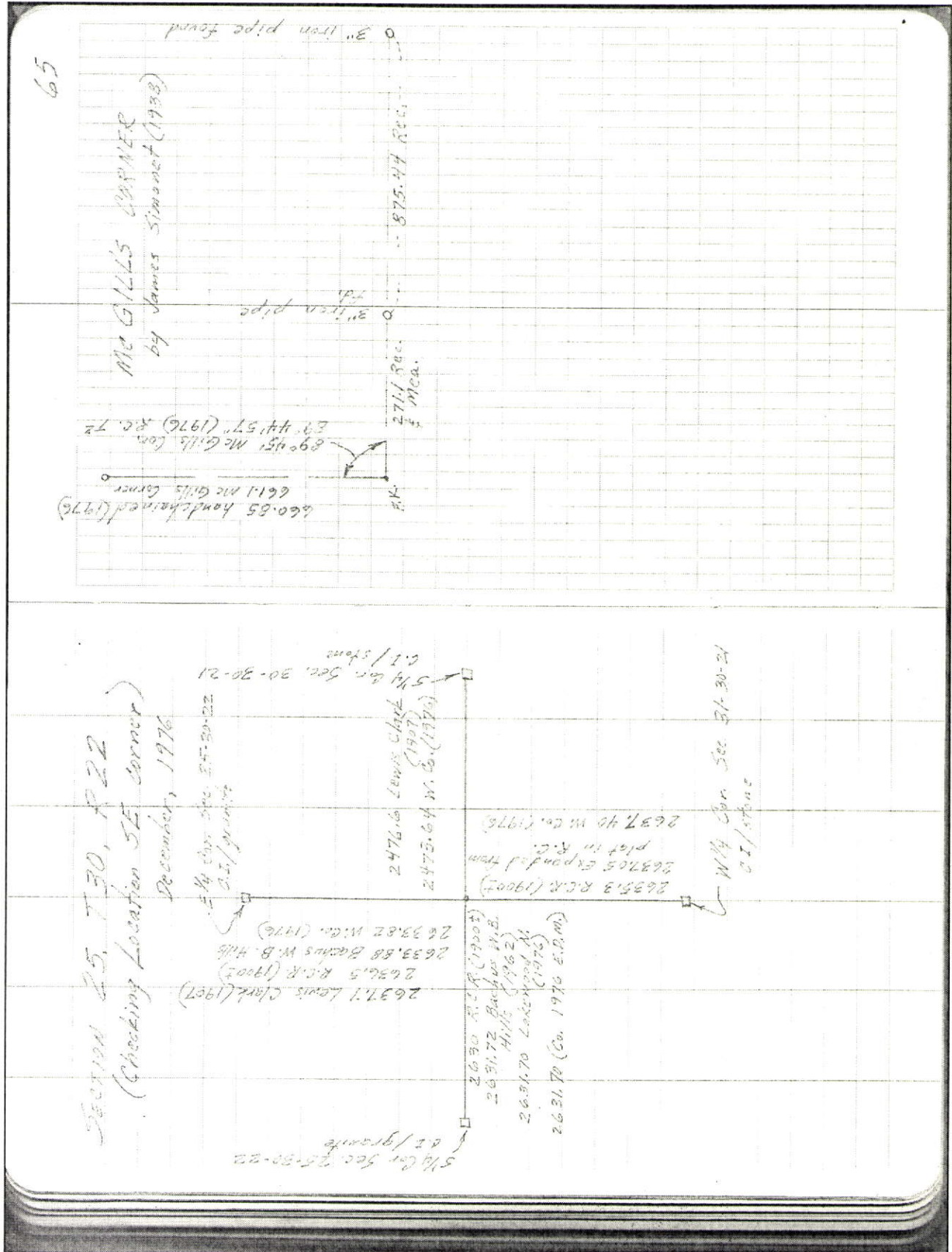
MN/DOT called and stated monument was broken; checked location and removed monument. Set a new 20 in. cast iron monument within a cast iron manhole assembly, August 20, 2001.

Tied out monument, August 27, 2007.

Checked cast iron monument and tie conditions, July 17, 2012.

MONUMENT 275

Northeast Corner of Section 36, Township 30 North, Range 22 West



MONUMENT 275

Northeast Corner of Section 36, Township 30 North, Range 22 West

