

MONUMENT 263

CERTIFICATE OF LOCATION OF GOVERNMENT CORNER

Northeast Corner of Section 36, Township 30 North, Range 23 West, County of Ramsey, State of Minnesota.

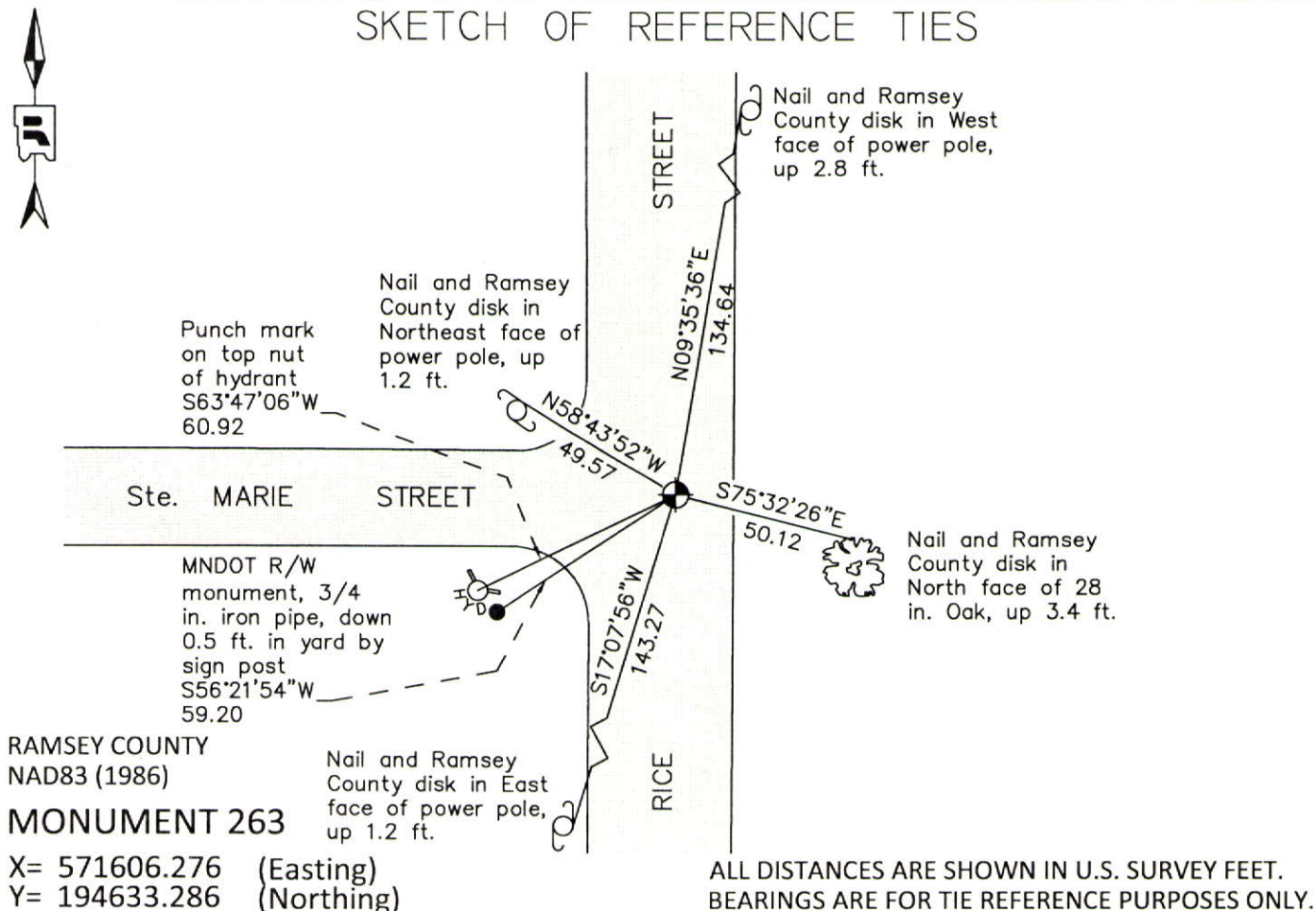
At the corner location shown on the sketch

On July 17, 2012 found a "Ramsey County" cast iron monument, flush in bituminous road.

left monument as found raised/lowered monument removed monument (explain)

On _____ placed a _____

SKETCH OF REFERENCE TIES



Statements of evidence relative to this corner are on the following page.

I hereby certify that this document was prepared by me or under my direct supervision and that I am a duly Licensed Land Surveyor under the laws of the State of Minnesota.

Daniel D. Baar 12-30-14
 Daniel D. Baar Date
 Minnesota License No. 45816

- County Surveyor Land Surveyor
 Deputy County Surveyor

OFFICE OF COUNTY SURVEYOR
 County of Ramsey

I hereby certify that this document was filed in the County Surveyor's office this 30th day of December, 20 14.

Craig W. Hinzman
 Craig W. Hinzman, L.S.
 Ramsey County Surveyor

MONUMENT 263

Northeast Corner of Section 36, Township 30 North, Range 23 West

Set post at Corner to Sections 25, 30, 31, & 36, B. Oak 12 N89°W 148, B. Oak 6 S89°W 60, October 18, 1847.

In establishing the Southwest Corner of section 30, ran straight line and prorated and fixed Section Corner. No Government trees, set monument, July 1896.

Checked monument, November 22, 1939.

Granite monument shown at described location on ROWE AND KNUDSON'S WOODED HOMESITES plat, December 20, 1939.

Checked monument, December, 1943.

Found a granite monument down 0.61 ft. and tied out, June 25, 1975.

Set a short cast iron monument, July 14, 1975.

Tied monument, down 0.1 ft., June 28, 1991.

Removed short cast iron monument after road overlay project and re-cemented flush, October 13, 1993.

Tied monument, December 4, 2002.

Retied monument, August 24, 2007.

Checked monument and tie conditions, July 17, 2012.