

MONUMENT 238

CERTIFICATE OF LOCATION OF GOVERNMENT CORNER

East Quarter Corner of Section 25, Township 30 North, Range 23 West, County of Ramsey, State of Minnesota.

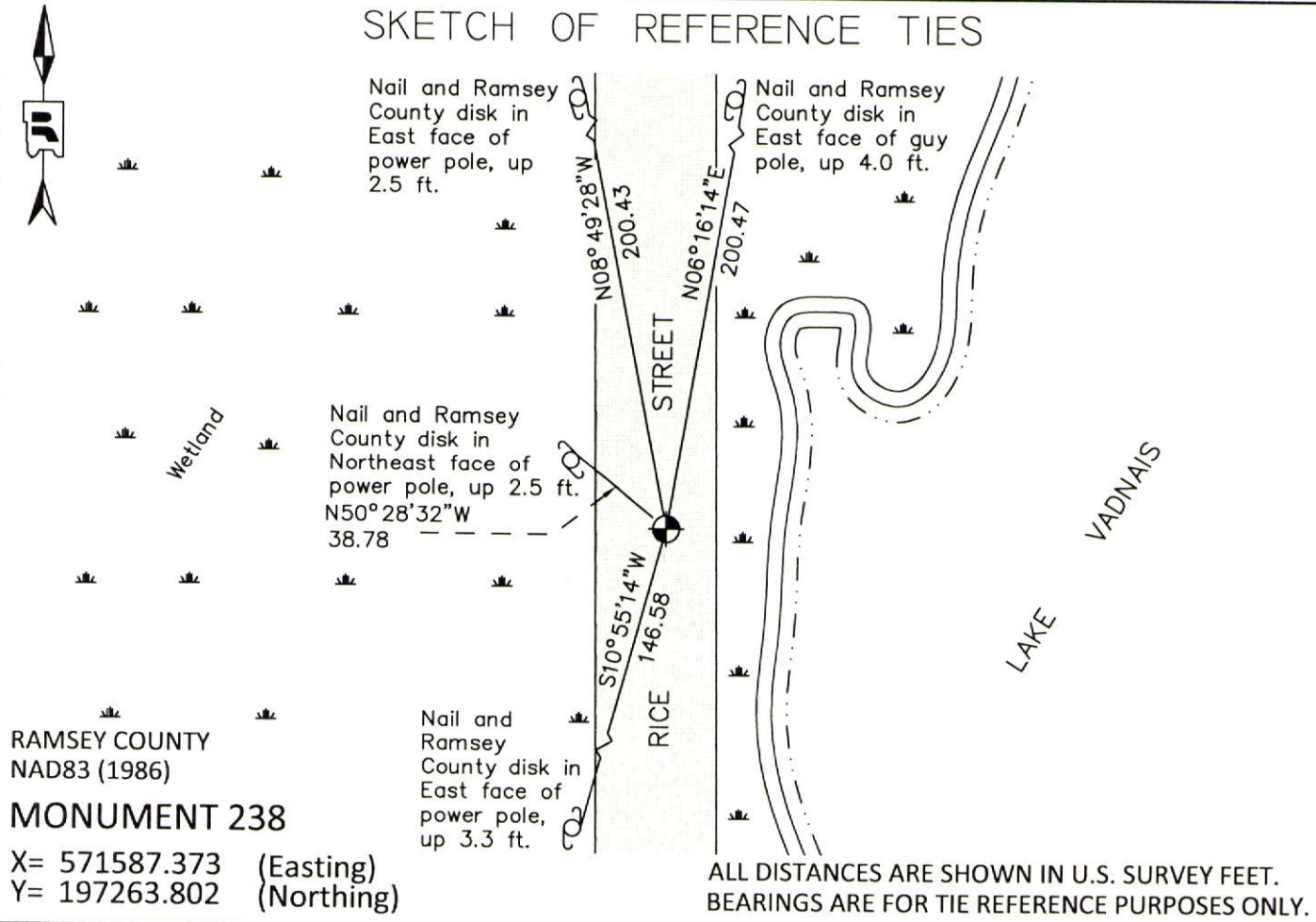
At the corner location shown on the sketch

On September 6, 2012 found a cast iron monument, with a worn top, flush in bituminous road.

left monument as found raised/lowered monument removed monument (explain)

On _____ placed a _____

SKETCH OF REFERENCE TIES



Statements of evidence relative to this corner are on the following page.

I hereby certify that this document was prepared by me or under my direct supervision and that I am a duly Licensed Land Surveyor under the laws of the State of Minnesota.

Daniel D. Baar 12-31-14
Daniel D. Baar Date
Minnesota License No. 45816

- County Surveyor
 Deputy County Surveyor Land Surveyor

OFFICE OF COUNTY SURVEYOR
County of Ramsey

I hereby certify that this document was filed in the County Surveyor's office this 31st day of December, 2014.

Craig W. Hinzman
Craig W. Hinzman, L.S.
Ramsey County Surveyor

MONUMENT 238

East Quarter Corner of Section 25, Township 30 North, Range 23 West

Set post at Quarter Section Corner, B. Oak 18 N2-1/2°W 781, October 18, 1847.

In establishing the 1/4 Corner between Section 25, T. 30, R. 23, and Sec. 30, T. 30, R. 22, this Corner was fixed from Sub. Div. stakes along the East side of Rice Street. Government witness trees gone, fixed Corner, tied it and set monument, June 1896.

Placed drill hole opposite nail in center line of pavement, checked with old ties, February 26, 1940.

Replaced drill hole with iron monument, October 21, 1940.

Checked monument, December, 1943.

Found a P.K. nail in bituminous road surface. Found 0.5 in. inside diameter iron, 1.38 ft. long, down 1.19 ft. Found old road surface down 2.9 ft. with 1.5 in. diameter iron in old pavement, July 1, 1975.

Placed a 20 in. cast iron monument, July 7, 1975.

Tied monument, December 20, 1991.

Monument down 5 in.; set a 4 5/8 in. cast iron monument over top and cemented in place, October 13, 1993.

Tied monument, December 4, 2002.

Retied monument, August 24, 2007.

Found a cast iron monument flush in bituminous road, top worn, checked condition of ties, September 6, 2012.