

# MONUMENT 227

## CERTIFICATE OF LOCATION OF FOUND MONUMENT

Center of Section 30, Township 30 North, Range 23 West, County of Ramsey, State of Minnesota.

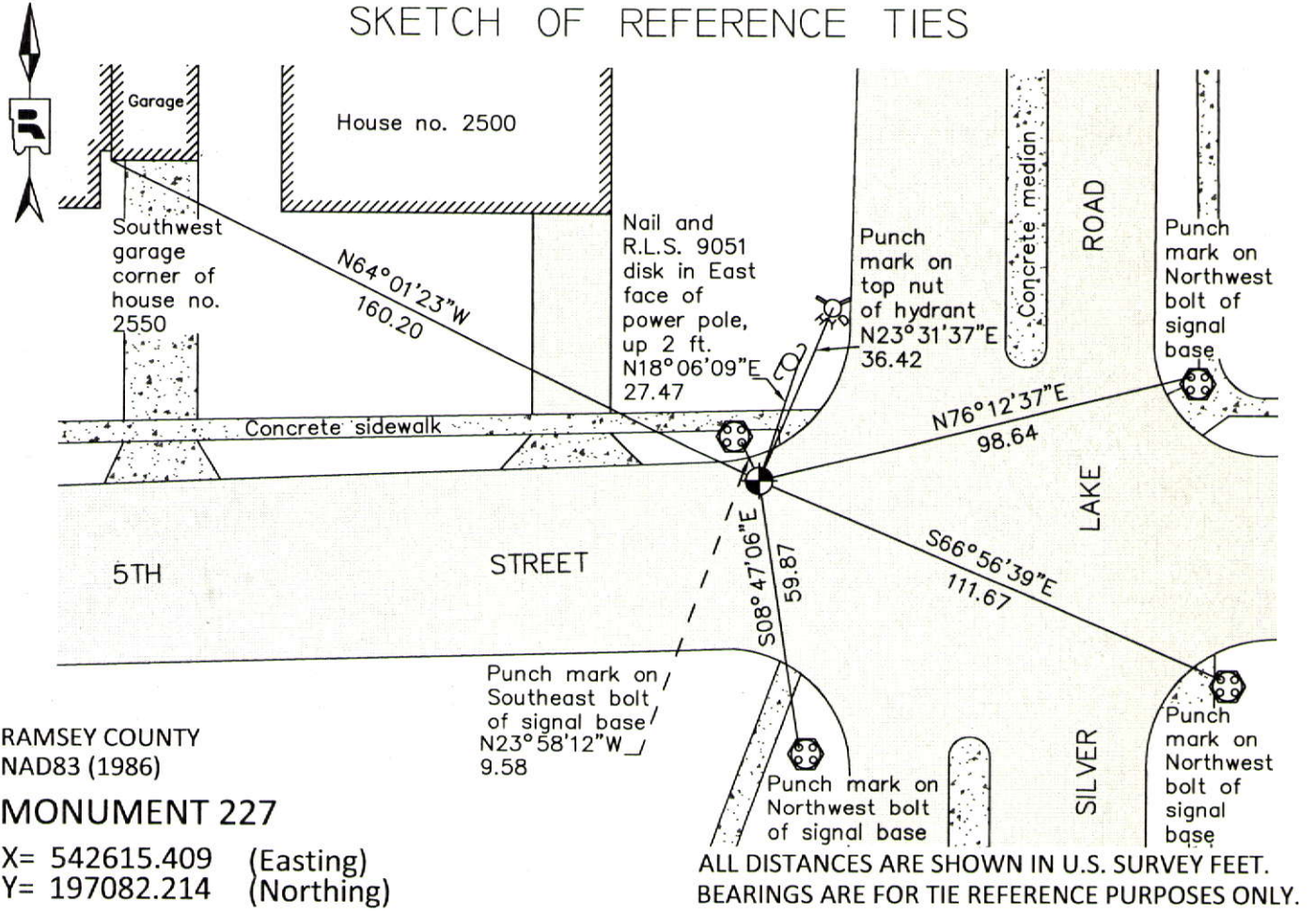
At the corner location shown on the sketch

On May 25, 2012 found a cast iron monument with worn top, flush in bituminous road.

left monument as found       raised/lowered monument       removed monument (explain)

On \_\_\_\_\_ placed a \_\_\_\_\_

### SKETCH OF REFERENCE TIES



Statements of evidence relative to this corner are on the following page.

I hereby certify that this document was prepared by me or under my direct supervision and that I am a duly Licensed Land Surveyor under the laws of the State of Minnesota.

Daniel D. Baar      12-31-14  
Daniel D. Baar      Date

Minnesota License No. 45816

- County Surveyor       Land Surveyor  
 Deputy County Surveyor

OFFICE OF COUNTY SURVEYOR  
County of Ramsey

I hereby certify that this document was filed in the County Surveyor's office this 31st day of December, 20 14.

Craig W. Hinzman  
Craig W. Hinzman, L.S.  
Ramsey County Surveyor

# MONUMENT 227

Center of Section 30, Township 30 North, Range 23 West

Ramsey County Re-survey map shows a stone monument set at Center of Section, +/-1900.

Checked monument, March, 1933.

Checked monument, November, 1943.

Checked monument, December, 1946.

Registered Land Survey no. 119, shows a stone monument at Center of Section 30, Township 30 North, Range 23 West, April 30, 1957.

Found a cast iron monument flush and tied, July 12, 1974.

Cast iron monument down 0.2 ft., April, 1991.

Monument removed during construction, 1995.

Contractor set manhole, 1996.

Manhole too close to gutter and fills with water; removed manhole, 1997.

Set a 20 in. cast iron monument flush, August 5, 1997.

Tied monument, November 1, 2002.

Retied monument, July 12, 2007.

Checked condition of cast iron monument and ties, May 25, 2012.