

MONUMENT 204

CERTIFICATE OF LOCATION OF FOUND MONUMENT

North Quarter Corner of Section 29, Township 30 North, Range 23 West, County of Ramsey, State of Minnesota.

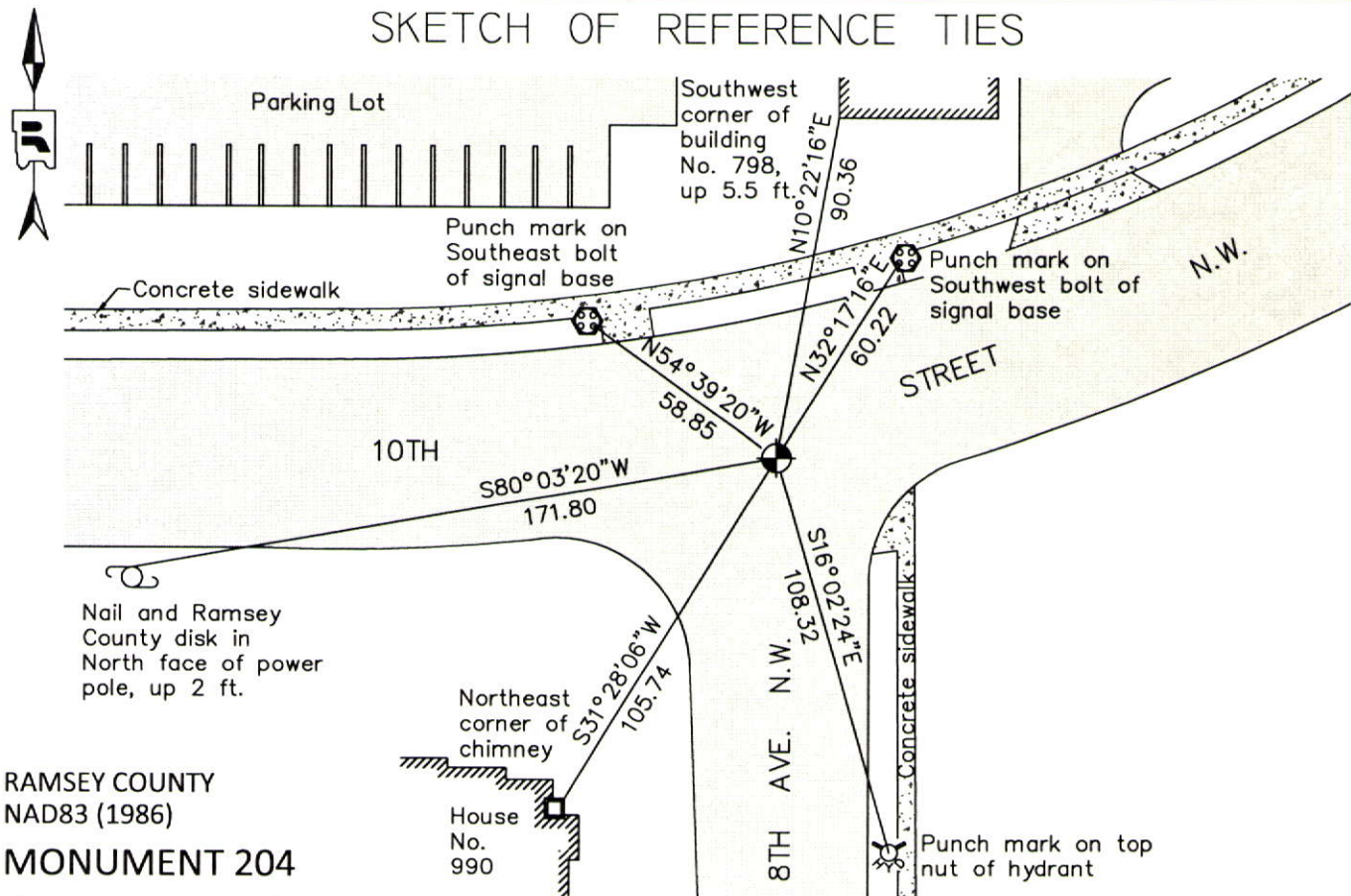
At the corner location shown on the sketch

On July 30, 2012 found a cast iron monument with the top broken off, down 0.3 ft. in bituminous road.

left monument as found
 raised/lowered monument
 removed monument (explain)

On _____ placed a _____

SKETCH OF REFERENCE TIES



RAMSEY COUNTY
NAD83 (1986)
MONUMENT 204

X= 547838.780 (Easting)
Y= 199775.384 (Northing)

ALL DISTANCES ARE SHOWN IN U.S. SURVEY FEET.
BEARINGS ARE FOR TIE REFERENCE PURPOSES ONLY.

Statements of evidence relative to this corner are on the following page.

I hereby certify that this document was prepared by me or under my direct supervision and that I am a duly Licensed Land Surveyor under the laws of the State of Minnesota.

Daniel D. Baar
Daniel D. Baar Date _____
Minnesota License No. 45816

- County Surveyor Land Surveyor
 Deputy County Surveyor

OFFICE OF COUNTY SURVEYOR
County of Ramsey

I hereby certify that this document was filed in the County Surveyor's office this 30th day of December, 20 14.

Craig W. Hinzman
Craig W. Hinzman, L.S.
Ramsey County Surveyor

MONUMENT 204

North Quarter Corner of Section 29, Township 30 North, Range 23 West

Set 1/4 Section post, Bur Oak 12 S64°E 87, Bur Oak 14 N68°W 1.29,
December 16, 1847.

In establishing the 1/4 Corner between Sections 20 and 29, this Corner was fixed
from Add. stakes, found no Government witness trees. Set monument,
September, 1900.

Granite monument shown at this location on REDMOND ADDITION, RAMSEY
COUNTY, MINN, June 20, 1939.

Checked monument, November, 1943.

Found a cast iron monument flush and tied, February 13, 1976.

Monument destroyed by construction, 1980.

Replaced 20 in. cast iron monument, no date given in field book.

Ramsey County cast iron monument shown in this location on the plat of LEIER
ESTATES, October 25, 1982.

Tied monument, June 19, 1991.

Retied monument, November 21, 2002.

Retied monument, July 30, 2007.

Checked monument, and ties, found a cast iron monument, shaft only, top broken
off, down 0.3 ft. in bituminous road, July 30, 2012.