

# MONUMENT 202

## CERTIFICATE OF LOCATION OF FOUND MONUMENT

North Quarter Corner of Section 30, Township 30 North, Range 23 West, County of Ramsey, State of Minnesota.

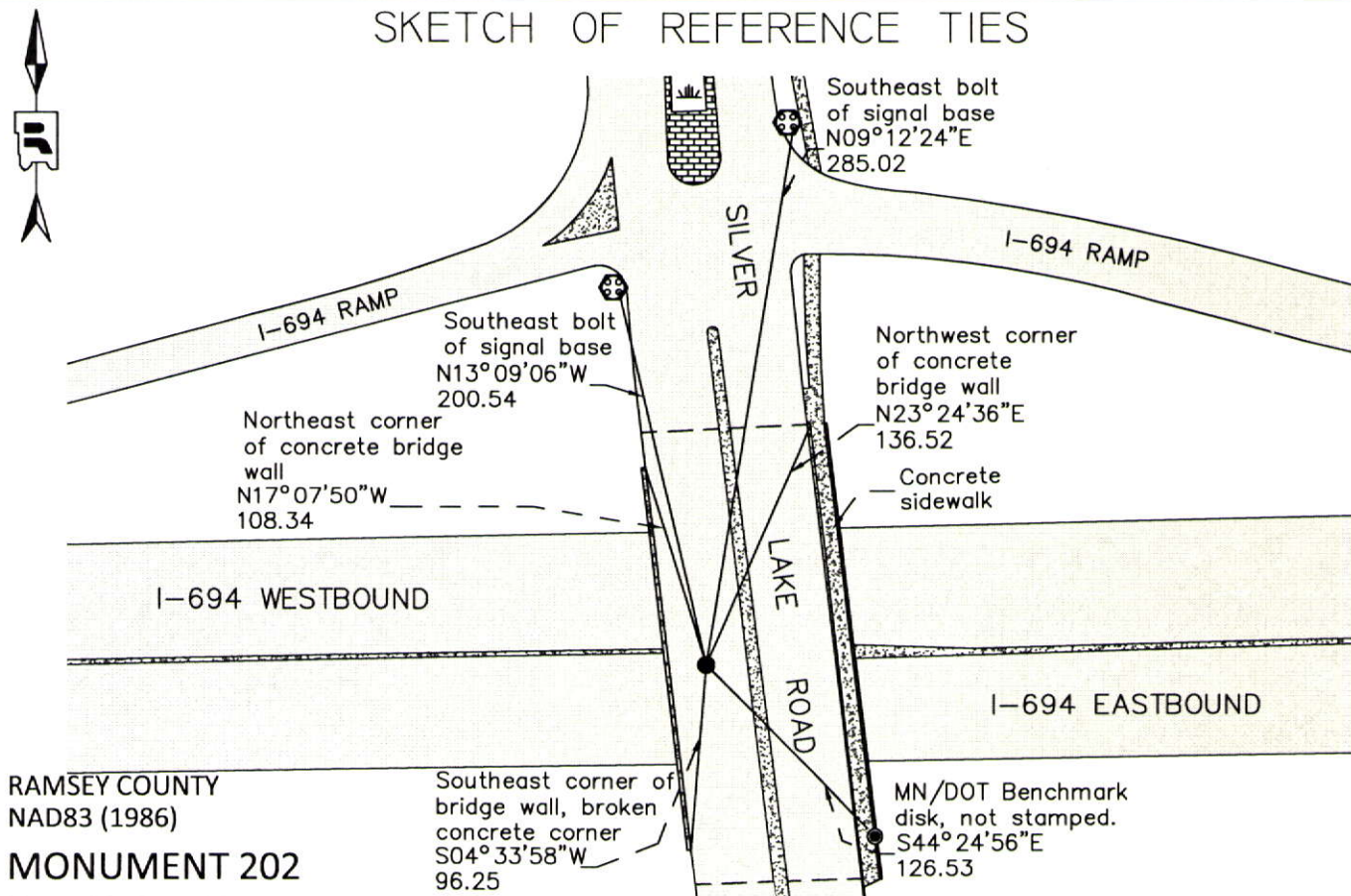
At the corner location shown on the sketch

On June 4, 2012 found a 3/4 in. brass plug in concrete bridge deck.

left monument as found       raised/lowered monument       removed monument (explain)

On \_\_\_\_\_ placed a \_\_\_\_\_

### SKETCH OF REFERENCE TIES



RAMSEY COUNTY  
NAD83 (1986)  
**MONUMENT 202**

X= 542585.703 (Easting)  
Y= 199708.799 (Northing)

ALL DISTANCES ARE SHOWN IN U.S. SURVEY FEET.  
BEARINGS ARE FOR TIE REFERENCE PURPOSES ONLY.

Statements of evidence relative to this corner are on the following page.

I hereby certify that this document was prepared by me or under my direct supervision and that I am a duly Licensed Land Surveyor under the laws of the State of Minnesota.

Daniel D. Baar      12-30-14  
Daniel D. Baar      Date

Minnesota License No. 45816

- County Surveyor       Land Surveyor  
 Deputy County Surveyor

OFFICE OF COUNTY SURVEYOR  
County of Ramsey

I hereby certify that this document was filed in the County Surveyor's office this 30th day of December, 20 14.

Craig W. Hinzman  
Craig W. Hinzman, L.S.  
Ramsey County Surveyor

## MONUMENT 202

North Quarter Corner of Section 30, Township 30 North, Range 23 West

Set 1/4 Section post, W. Oak 18 S59°E 74, "Do" (W. Oak) 10 N27°W 1.02, December 16, 1847.

In establishing the 1/4 Corner between Sections 19 and 30, found old stake at 1/4 Corner and old stump hole of Government Witness tree, September 17, 1898.

Set monument, December, 1899.

Checked monument, November, 1943.

Checked monument, December, 1943.

Checked monument, May, 1946.

Monument location is in I-694 right of way.

Bridge rebuilt and a brass plug monument was placed by MN/DOT to represent the south quarter corner, 1985.

Tied out brass plug monument, November 13, 2002.

Retied monument, July 30, 2007.

Checked condition of 3/4 in. brass plug and ties, June 4, 2012.