

MONUMENT 172E

CERTIFICATE OF LOCATION OF GOVERNMENT CORNER

Meander Corner No. 4 of Section 14, Township 30 North, Range 22 West, County of Ramsey, State of Minnesota.

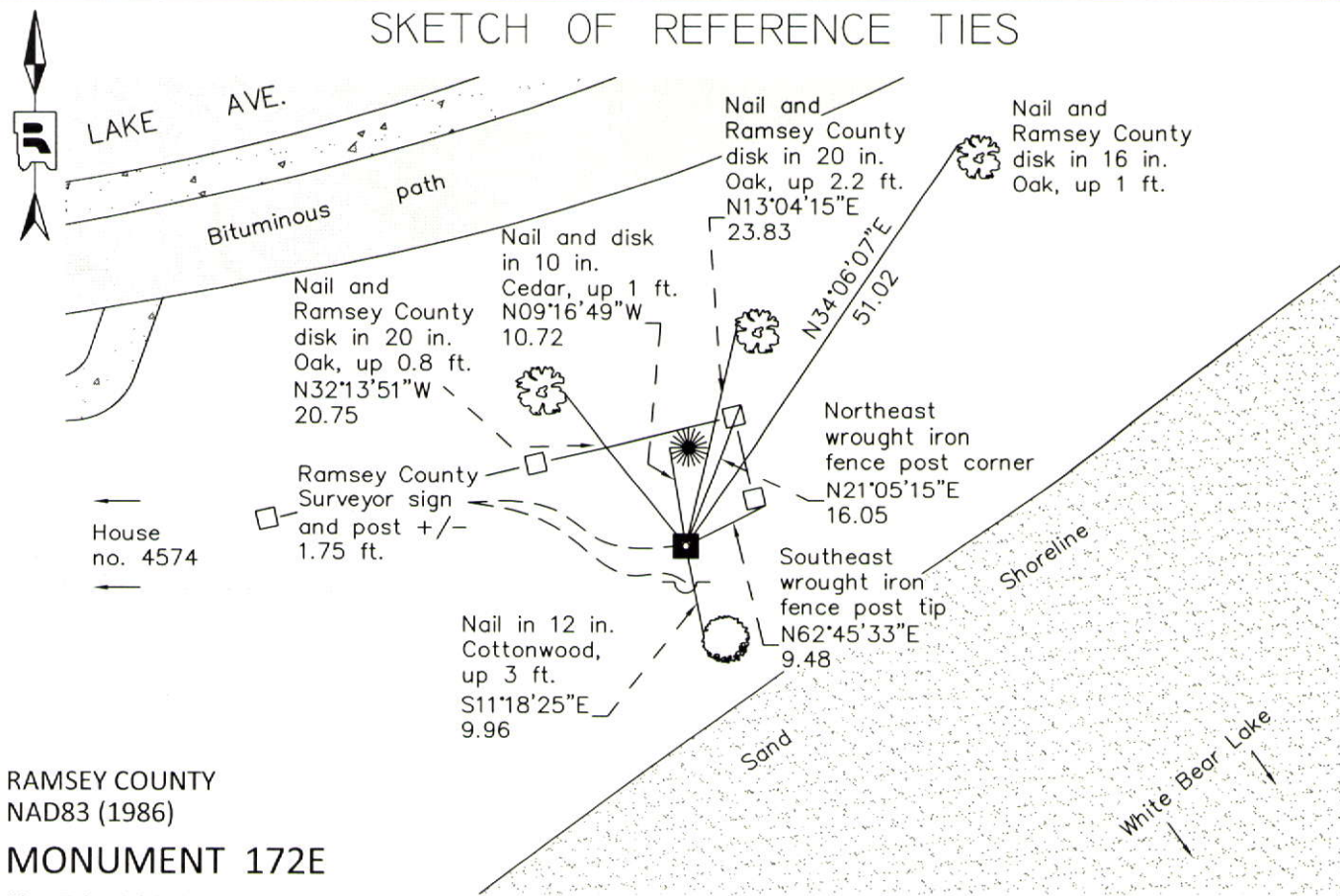
At the corner location shown on the sketch

On September 16, 2011 found a granite monument down 1.2 ft.

left monument as found raised/lowered monument removed monument (explain)

On _____ placed a _____

SKETCH OF REFERENCE TIES



RAMSEY COUNTY
NAD83 (1986)
MONUMENT 172E

X= 595669.308 (Easting)
Y= 205257.217 (Northing)

ALL DISTANCES ARE SHOWN IN U.S. SURVEY FEET.
BEARINGS ARE FOR TIE REFERENCE PURPOSES ONLY.

Statements of evidence relative to this corner are on the following page.

I hereby certify that this document was prepared by me or under my direct supervision and that I am a duly Licensed Land Surveyor under the laws of the State of Minnesota.

Daniel D. Baar 12-30-14
Daniel D. Baar Date

Minnesota License No. 45816

- County Surveyor Land Surveyor
 Deputy County Surveyor

OFFICE OF COUNTY SURVEYOR
County of Ramsey

I hereby certify that this document was filed in the County Surveyor's office this 30th day of December, 20 14.

Craig W. Hinzman
Craig W. Hinzman, L.S.
Ramsey County Surveyor

MONUMENT 172E

Meander Corner No. 4 of Section 14, Township 30 North, Range 22 West

Set Meander post, Bur Oak 16 S78°W 90, B. Oak 10 N38°W 43, December 7, 1847.

In establishing Meander Corner No. 4 found one Government witness tree and one Government stump, fixed Corner, January 15, 1902.

Set Monument, December 3, 1902.

Meander Corner #4 Ok, October, 1939.

Found granite monument, down +/-1 ft., June 12, 1975.

Tied monument, down +/-2.5 ft., June 15, 1990.

Retied monument, down +/-2.0 ft., September 28, 1999.

Set sign and post, 8 in. South of monument, October 25, 1999.

Retied monument, August 23, 2006.

Retied a granite monument down 1.2 ft., September 16, 2011.