

# MONUMENT 172

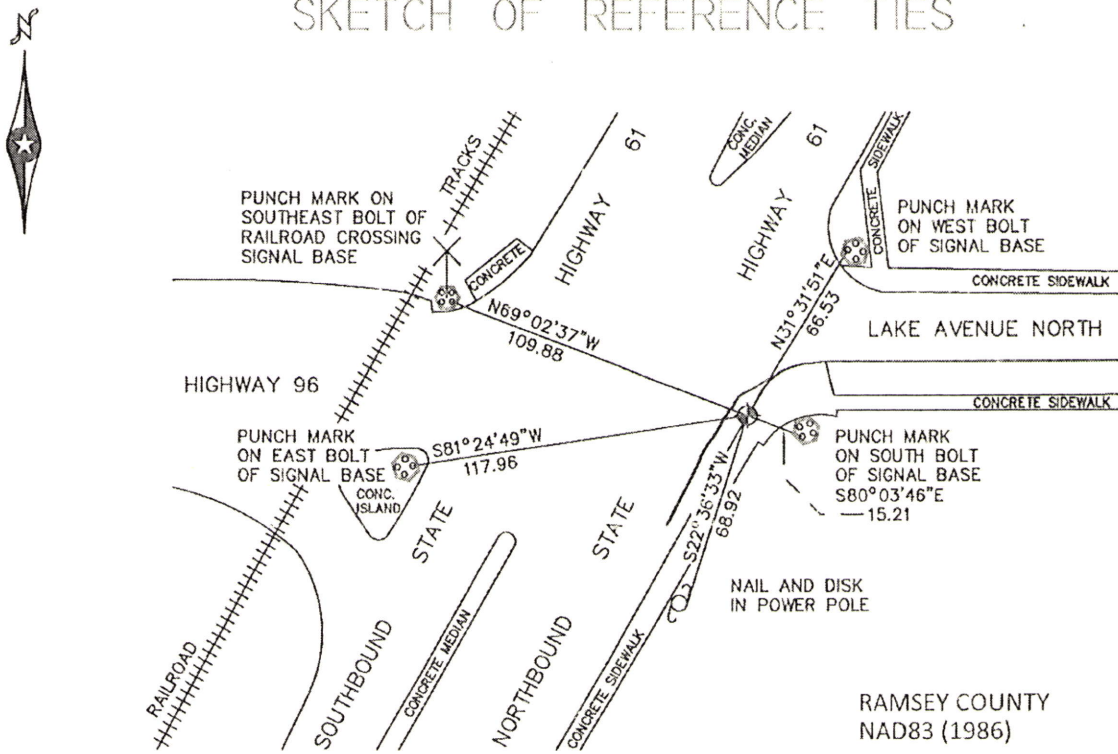
## CERTIFICATE OF LOCATION OF GOVERNMENT CORNER

South Quarter Corner of Section 14, Township 30 North, Range 22 West, County of Ramsey, State of Minnesota.

At the corner location shown on the sketch short 4 3/8 inch  
 On August 4, 2010 April 21, 2014 found a cast iron monument, flush. Checked ties and removed cast iron due to construction.

left monument as found       raised/lowered monument       removed monument (explain)  
 On Dec 11, 2014 re-placed the short cast iron, all ties check.  
 Note: the gutter line was changed, the cast iron is now in the sidewalk set in concrete flush.

### SKETCH OF REFERENCE TIES



ALL DISTANCES ARE SHOWN IN U.S. SURVEY FEET.  
 BEARINGS ARE FOR TIE REFERENCE PURPOSES ONLY.

RAMSEY COUNTY  
 NAD83 (1986)  
**MONUMENT 172**  
 X= 595045.351 (Easting)  
 Y= 205256.456 (Northing)

Statements of evidence relative to this corner are on the following page.

I hereby certify that this document has been prepared by me or under my direct supervision this 11th day of December, 2014.

[Signature]  
 SIGNATURE

Minnesota License No. 26723

- County Surveyor  
 Deputy County Surveyor  
 Land Surveyor

OFFICE OF COUNTY SURVEYOR  
 County of Ramsey

I hereby certify that this document was filed in the County Surveyor's office this 15th day of December, 2015.

[Signature]  
 SIGNATURE  
~~Michael D. Fiebiger, P.L.S.~~ CRAIG W. HINZMAN L.S.  
 Ramsey County Surveyor

## MONUMENT 172

Found nothing. Placed a cast iron monument as per Survey Book No.1, pages 56 and 57. Obtained ties from State Highway Department, which checked, June 24, 1975.

Tied monument, June 15, 1990.

Retied monument, September 28, 1999.

Concrete added around monument, May 24, 2000.

Retied monument, December 14, 2004.

Monument tied out for removal during sewer/water and sidewalk re-construction, June 28, 2007.

Reset a short (4 5/8 in.) cast iron monument, flush in the concrete curbing gutter, September 28, 2007.

Tied monument, August 4, 2010.