

MONUMENT 388

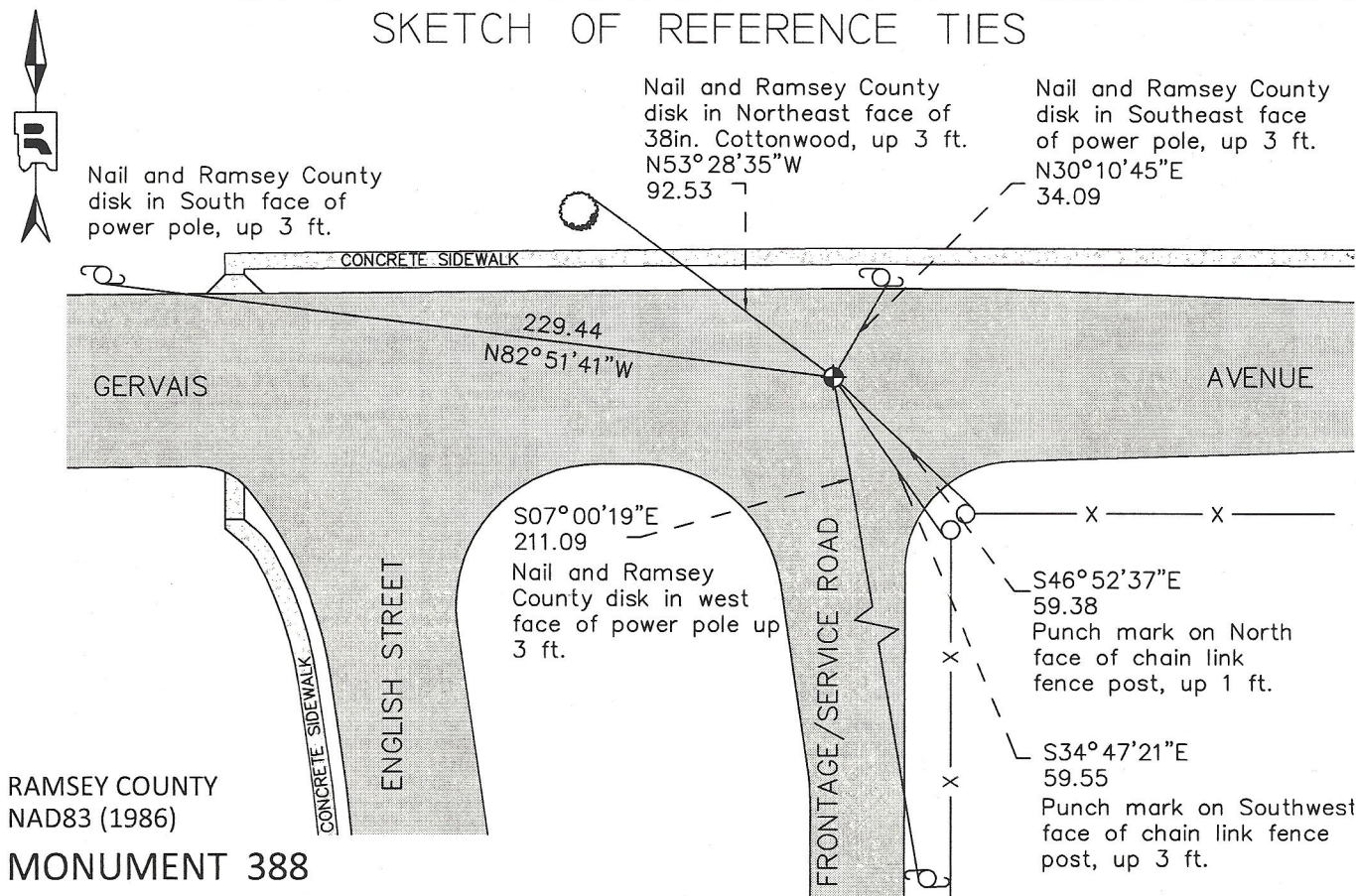
CERTIFICATE OF LOCATION OF GOVERNMENT CORNER

East Quarter Corner of Section 9, Township 29 North, Range 22 West, County of Ramsey, State of Minnesota.

At the corner location shown on the sketch

- On October 31, 2012 found "Ramsey County" cast iron monument, flush in bituminous roadway; tied monument for removal during road construction.
- left monument as found
 raised/lowered monument
 removed monument (explain)
- On October 22, 2013 placed a "Ramsey County" 20 inch cast iron monument within a cast iron manhole assembly; tied monument.

SKETCH OF REFERENCE TIES



RAMSEY COUNTY
NAD83 (1986)

MONUMENT 388

X= 587328.593 (Easting)
Y= 181339.633 (Northing)

ALL DISTANCES ARE SHOWN IN U.S. SURVEY FEET.
BEARINGS ARE FOR TIE REFERENCE PURPOSES ONLY.

Statements of evidence relative to this corner are on the following page.

I hereby certify that this document was prepared by me or under my direct supervision and that I am a duly Licensed Land Surveyor under the laws of the State of Minnesota.

Daniel D. Baar 11-18-13
Daniel D. Baar Date
Minnesota License No. 45816

- County Surveyor
 Deputy County Surveyor Land Surveyor

OFFICE OF COUNTY SURVEYOR
County of Ramsey

I hereby certify that this document was filed in the County Surveyor's office this 18th day of November, 20 13.

Craig W. Hinzman
Craig W. Hinzman, L.S.
Ramsey County Surveyor

MONUMENT 388

East Quarter Corner of Section 9, Township 29, Range 22, County of Ramsey, State of Minnesota.

Set Quarter Section Post, B. Oak 12 S83°E 2.34, November 29, 1847.

In establishing the 1/4 Corner between Sections 9 and 10, ran straight line from corner to corner and fixed 1/4 corner 1/2 way, Government ties gone, set monument, November 1899.

Reset monument-G.B.(field crew initials), May 6, 1949.

Transit ties taken to granite monument, May 1, 1967.

Monument destroyed by construction, last seen, July 16, 1980.

Replaced cast iron monument, July 22, 1981.

Tied monument, August 9, 1990.

Retied monument, April 9, 2003.

Retied monument, June 29, 2009.

Found "Ramsey County" cast iron monument, flush in bituminous roadway; tied monument for removal during road reconstruction, October 31, 2012.

Placed a "Ramsey County" 20 inch cast iron monument within a cast iron manhole assembly; tied monument, October 22, 2013.