

MONUMENT 762

CERTIFICATE OF LOCATION OF GOVERNMENT CORNER

East Quarter Corner of Section 24, Township 28 North, Range 22 West, County of Ramsey, State of Minnesota.

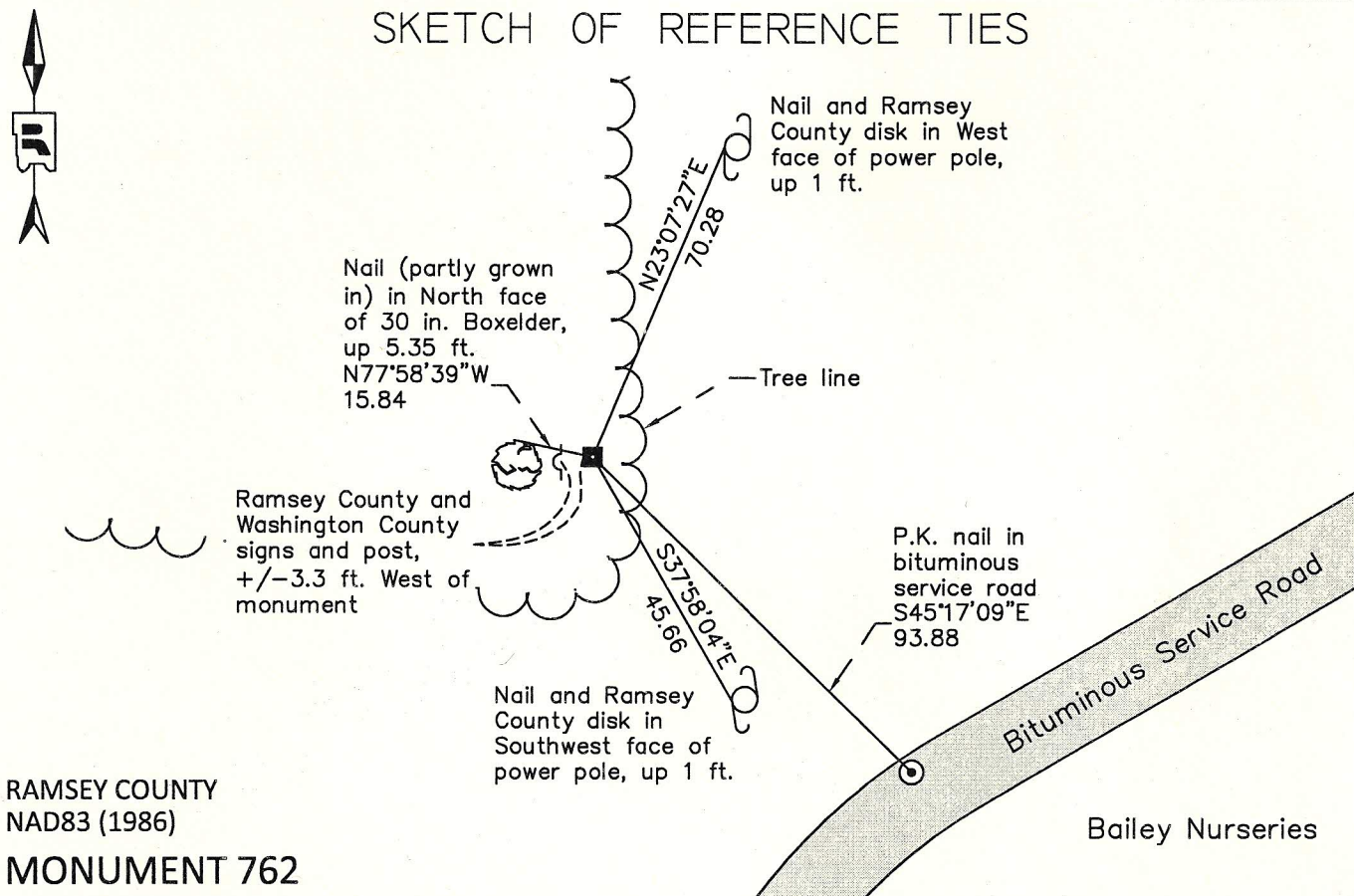
At the corner location shown on the sketch

On September 28, 2012 found an 8 in. x 8 in. granite monument with drill hole, down 1.5 ft.

left monument as found raised/lowered monument removed monument (explain)

On _____ placed a _____

SKETCH OF REFERENCE TIES



RAMSEY COUNTY
NAD83 (1986)
MONUMENT 762

X= 603429.396 (Easting)
Y= 139242.911 (Northing)

ALL DISTANCES ARE SHOWN IN U.S. SURVEY FEET.
BEARINGS ARE FOR TIE REFERENCE PURPOSES ONLY.

Statements of evidence relative to this corner are on the following page.

I hereby certify that this document was prepared by me or under my direct supervision and that I am a duly Licensed Land Surveyor under the laws of the State of Minnesota.

Daniel D. Baar 2-20-13
Daniel D. Baar Date
Minnesota License No. 45816

- County Surveyor Land Surveyor
 Deputy County Surveyor

OFFICE OF COUNTY SURVEYOR
County of Ramsey

I hereby certify that this document was filed in the County Surveyor's office this 20th day of February, 20 13.

Craig W. Hinzman
Craig W. Hinzman, L.S.
Ramsey County Surveyor

MONUMENT 762

East Quarter Corner of Section 24, Township 28 North, Range 22 West

Set post at qr. Section Corner, Br. Oak 8 N85°E 62, Br. Oak 10 N64°W 89, September 30, 1847.

In establishing the 1/4 Corner on County line between Ramsey and Washington Counties, between Section 24, Township 28, Range 22 and Section 19, Township 28, Range 21, found one old Government witness stump; fixed Corner and tied it, May 21, 1897.

Found a cast iron monument up 0.1 ft.; old notes show a granite monument down 1 ft., August 6, 1974.

Removed broken cast iron monument; set a 1in. x 18 in. iron pipe along East side and flush with top of stone. 8 in. x 8 in. granite monument is down 1 ft., November 16, 1981. (Washington County Surveyor's Office)

Checked monument, October 2, 1984. (Washington County Surveyor's Office)

Cast iron monument gone; found a granite monument down +/-1.5 ft. and tied, August 9, 1989.

Found granite monument down +/-1.3 ft. and retied, July 31, 2002.

Retied granite monument, down 1.5 ft., September 7, 2007.

Found granite monument, down 1.5 ft. Checked condition of ties; Washington and Ramsey County sign and post +/-3.3 ft. West of monument, September 28, 2012.