

MONUMENT 460

CERTIFICATE OF LOCATION OF GOVERNMENT CORNER

North Quarter Corner of Section 23, Township 29 North, Range 22 West, County of Ramsey, State of Minnesota.

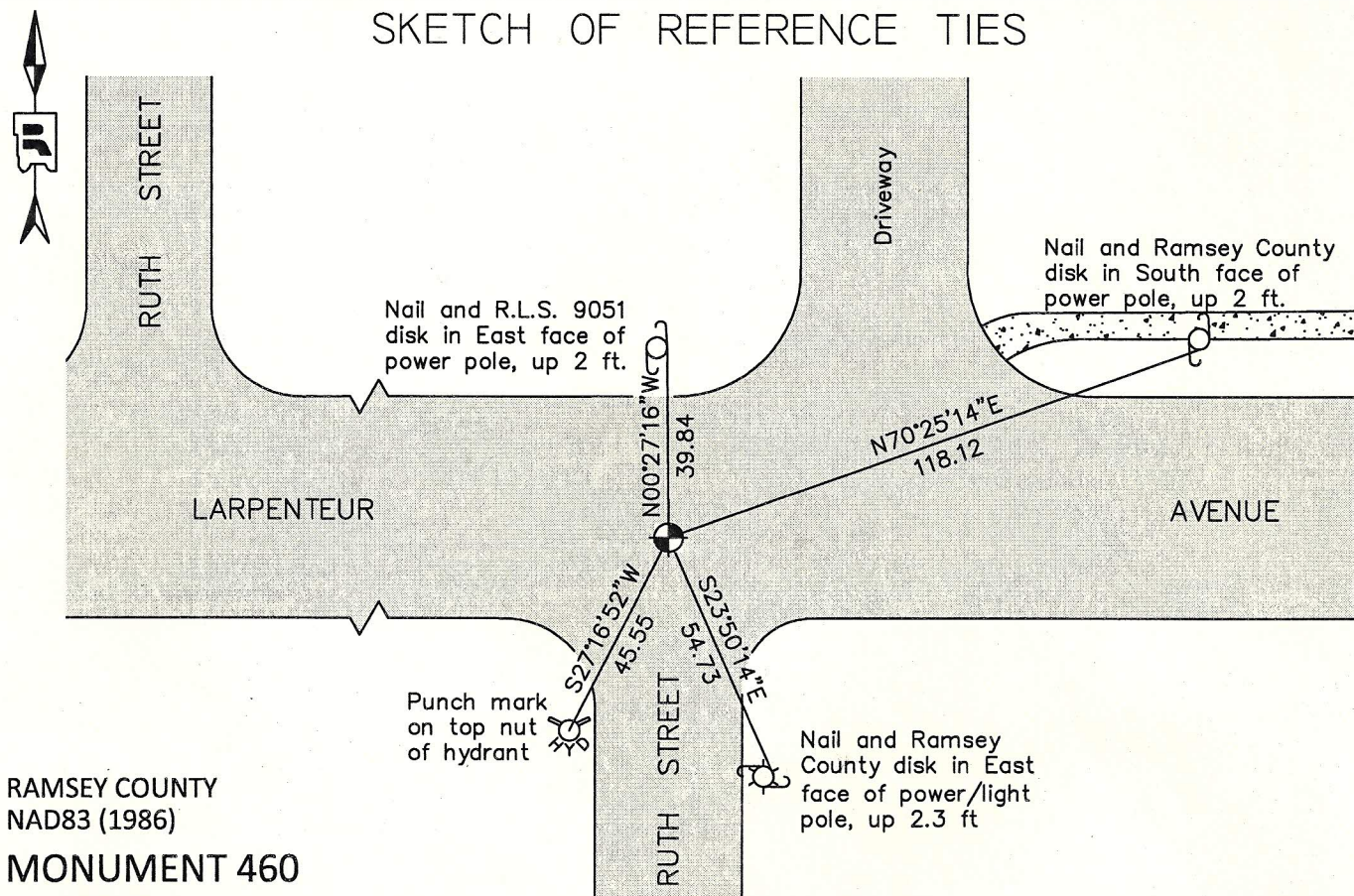
At the corner location shown on the sketch

On July 17, 2012 found a cast iron monument, down 0.2 ft. in bituminous road.

left monument as found raised/lowered monument removed monument (explain)

On _____ placed a _____

SKETCH OF REFERENCE TIES



RAMSEY COUNTY
NAD83 (1986)

MONUMENT 460

X= 595287.559 (Easting)
Y= 173452.517 (Northing)

ALL DISTANCES ARE SHOWN IN U.S. SURVEY FEET.
BEARINGS ARE FOR TIE REFERENCE PURPOSES ONLY.

Statements of evidence relative to this corner are on the following page.

I hereby certify that this document was prepared by me or under my direct supervision and that I am a duly Licensed Land Surveyor under the laws of the State of Minnesota.

Daniel D. Baar 2-20-13
Daniel D. Baar Date
Minnesota License No. 45816

- County Surveyor Land Surveyor
 Deputy County Surveyor

OFFICE OF COUNTY SURVEYOR
County of Ramsey

I hereby certify that this document was filed in the County Surveyor's office this 20th day of February, 20 13.

Craig W. Hinzman
Craig W. Hinzman, L.S.
Ramsey County Surveyor

MONUMENT 460

North Quarter Corner of Section 23, Township 29 North, Range 22 West

Set 1/4 Section post, B. Oak 16 N45°W 14, Bur Oak 8 S24-1/2°W 10,
November 29, 1847.

Monument set by J. H. Armstrong, July 10, 1890. (City of St. Paul Surveyor's Office)

One bearing stump found, January, 1891. (City of St. Paul Surveyor's Office)

Tied monument, September 28, 1928. (City of St. Paul Surveyor's Office)

Tied stone monument, January 30, 1934. (City of St. Paul Surveyor's Office)

Tied monument, May 21, 1958. (City of St. Paul Surveyor's Office)

Placed a 4 in. iron, April 14, 1960. (City of St. Paul Surveyor's Office)

Checked monument, March, 1967.

Found a cast iron monument, no date given in field book.

Checked ties, 1980. (City of St. Paul Surveyor's Office)

Checked and tied monument, July 17, 1984.

Retied monument, November 6, 2002.

Retied monument, August 27, 2007.

Tied cast iron monument, December 1, 2010. (City of Saint Paul Surveyor)

Checked condition of cast iron monument, down 0.2 ft. in bituminous road, and ties,
July 17, 2012.