

MONUMENT 459

CERTIFICATE OF LOCATION OF GOVERNMENT CORNER

Northeast Corner of Section 22, Township 29 North, Range 22 West, County of Ramsey, State of Minnesota.

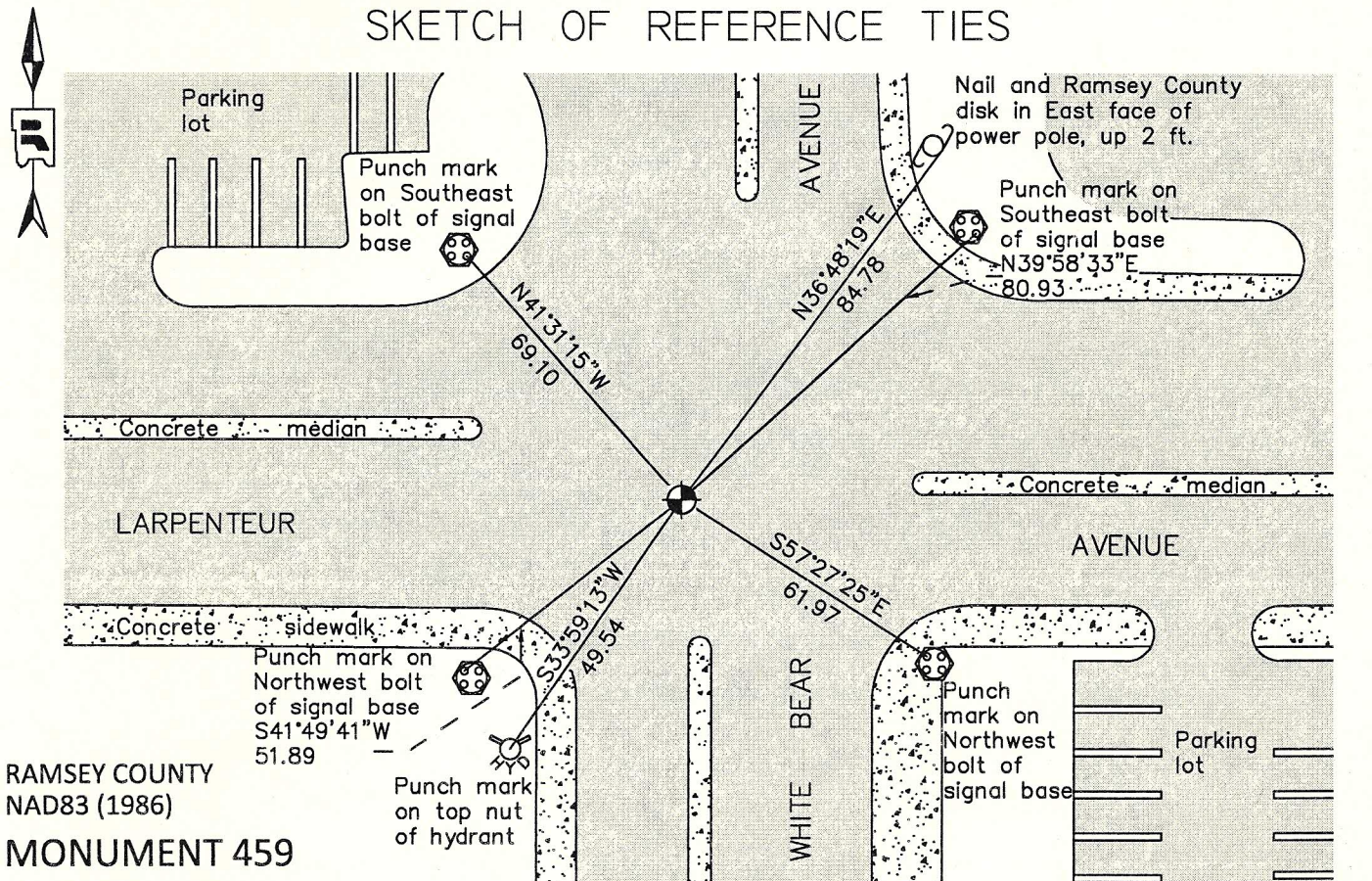
At the corner location shown on the sketch

On July 30, 2012 found a cast iron monument, down 0.05 ft. in bituminous road.

left monument as found raised/lowered monument removed monument (explain)

On _____ placed a _____

SKETCH OF REFERENCE TIES



RAMSEY COUNTY
NAD83 (1986)
MONUMENT 459

X= 592654.185 (Easting)
Y= 173432.850 (Northing)

ALL DISTANCES ARE SHOWN IN U.S. SURVEY FEET.
BEARINGS ARE FOR TIE REFERENCE PURPOSES ONLY.

Statements of evidence relative to this corner are on the following page.

I hereby certify that this document was prepared by me or under my direct supervision and that I am a duly Licensed Land Surveyor under the laws of the State of Minnesota.

Daniel D. Baar 2-20-13
Daniel D. Baar Date
Minnesota License No. 45816

County Surveyor
 Deputy County Surveyor Land Surveyor

OFFICE OF COUNTY SURVEYOR
County of Ramsey

I hereby certify that this document was filed in the County Surveyor's office this 20th day of February, 2013.

Craig W. Hinzman
Craig W. Hinzman, L.S.
Ramsey County Surveyor

MONUMENT 459

Northeast Corner of Section 22, Township 29 North, Range 22 West

Set post to Corner to Sections 14, 15, 22, & 23, B. Oak 16 N52°W 129, W. Oak 17 N72-1/2°E 4.49, November 29, 1847.

Monument set by J. H. Armstrong, March 27, 1890. (City of Saint Paul Surveyor's Office)

Tied monument, January 31, 1934. (City of Saint Paul Surveyor's Office)

MEISTER'S HIGHLANDS, RAMSEY CO., MINN. plat shows a granite monument at Southwest Corner of Section 14, Township 29, Range 22, December 28, 1939.

Set brass monument over original monument, down 2 ft., July, 1945. (City of Saint Paul Surveyor's Office)

Tied cast iron monument, June 9, 1955.

Replaced drill hole with cast iron monument, April 25, 1972. (City of Saint Paul Surveyor's Office)

Found a cast iron monument, 1974.

Checked monument, August 12, 1977.

Found a cast iron monument broken off, 1980.

Replaced with a short cast iron monument, July 17, 1981.

Tied monument, June 8, 1990.

Retied monument, November 7, 2002.

Retied monument, August 27, 2007.

Checked condition of cast iron monument, down 0.05 ft., and ties. Monument appears to be leaning Easterly, July 30, 2012.

Checked monument ties and static GPS distance measurement to the North Quarter Corner of Section 23; position of monument has not changed since it was installed July 17, 1981, December 12, 2012.