

# MONUMENT 454

## CERTIFICATE OF LOCATION OF GOVERNMENT CORNER

North Quarter Corner of Section 20, Township 29 North, Range 22 West, County of Ramsey, State of Minnesota.

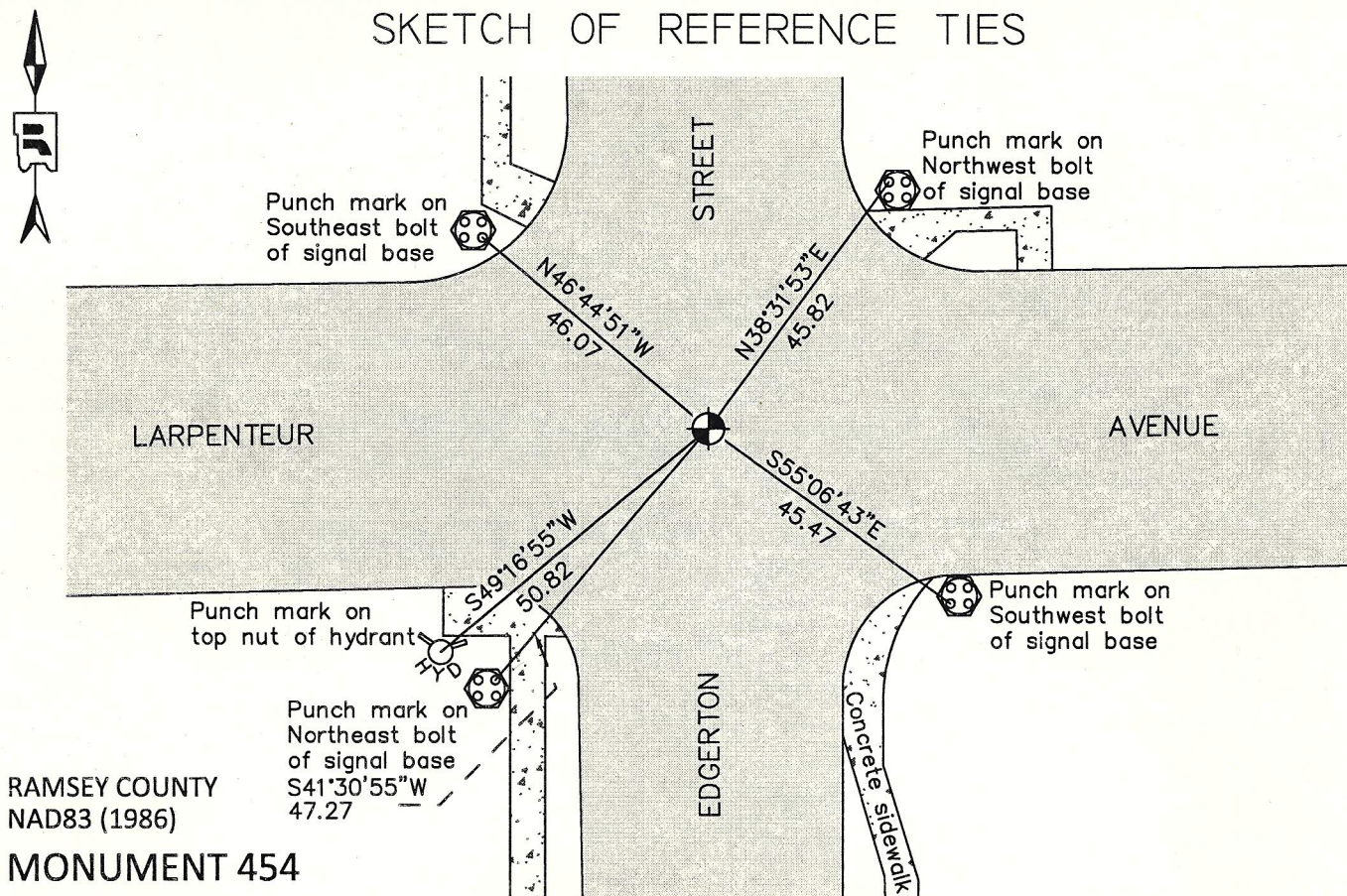
At the corner location shown on the sketch

On June 27, 2012 found a cast iron monument, down 0.25 ft. in bituminous road.

left monument as found       raised/lowered monument       removed monument (explain)

On \_\_\_\_\_ placed a \_\_\_\_\_

### SKETCH OF REFERENCE TIES



RAMSEY COUNTY  
NAD83 (1986)

### MONUMENT 454

X= 579462.504 (Easting)  
Y= 173366.354 (Northing)

ALL DISTANCES ARE SHOWN IN U.S. SURVEY FEET.  
BEARINGS ARE FOR TIE REFERENCE PURPOSES ONLY.

Statements of evidence relative to this corner are on the following page.

I hereby certify that this document was prepared by me or under my direct supervision and that I am a duly Licensed Land Surveyor under the laws of the State of Minnesota.

Daniel D. Baar      2-20-13  
Daniel D. Baar      Date  
Minnesota License No. 45816

- County Surveyor  
 Deputy County Surveyor       Land Surveyor

OFFICE OF COUNTY SURVEYOR  
County of Ramsey

I hereby certify that this document was filed in the County Surveyor's office this 20th day of February, 20 13.

Craig W. Hinzman  
Craig W. Hinzman, L.S.  
Ramsey County Surveyor

## MONUMENT 454

North Quarter Corner of Section 20, Township 29 North, Range 22 West

Set 1/4 Section post, W. Oak 10 N47°E 13, B. Oak 12 S1/2°W 29,  
November 29, 1847.

Monument set by J. H. Armstrong, September, 1887. (City of Saint Paul Surveyor's Office)

Monument was reset by Chas Hunt after grading, January 26, 1889. (City of Saint Paul Surveyor's Office)

Tied granite monument, February 1, 1934. (City of Saint Paul Surveyor's Office)

Tied monument, May 28, 1954. (City of Saint Paul Surveyor's Office)

Found Granite monument tipped and in bad shape, February 23, 1972. (City of Saint Paul Surveyor's Office)

Removed busted granite monument and replaced with cast iron monument flush with concrete, May 3, 1972. (City of Saint Paul Surveyor's Office)

Cast iron monument in wrong place, reset and tied, July 11, 1972. (City of Saint Paul Surveyor's Office)

Intersection under construction, monument has been removed, April, 1973. (City of Saint Paul Surveyor's Office)

Cast iron monument set to grade, August, 1973. (City of Saint Paul Surveyor's Office)

Found a cast iron monument, 1974.

Checked monument, August 12, 1977.

Found cast iron monument in place, June, 1980. (City of Saint Paul Surveyor's Office)

Found a cast iron monument down +/-0.15 ft. and tied out, May 10, 1990.

Found cast iron monument at grade and tied, March 9, 2001. (City of Saint Paul Surveyor's Office)

Retied monument, July 8, 2002.

# MONUMENT 454

North Quarter Corner of Section 20, Township 29 North, Range 22 West

Retied monument, August 22, 2007.

Checked condition of monument and ties; tied cast iron monument, down 0.25 ft., for removal during water main reconstruction, June 27, 2012.