

# MONUMENT 446

## CERTIFICATE OF LOCATION OF GOVERNMENT CORNER

North Quarter Corner of Section 22, Township 29 North, Range 23 West, County of Ramsey, State of Minnesota.

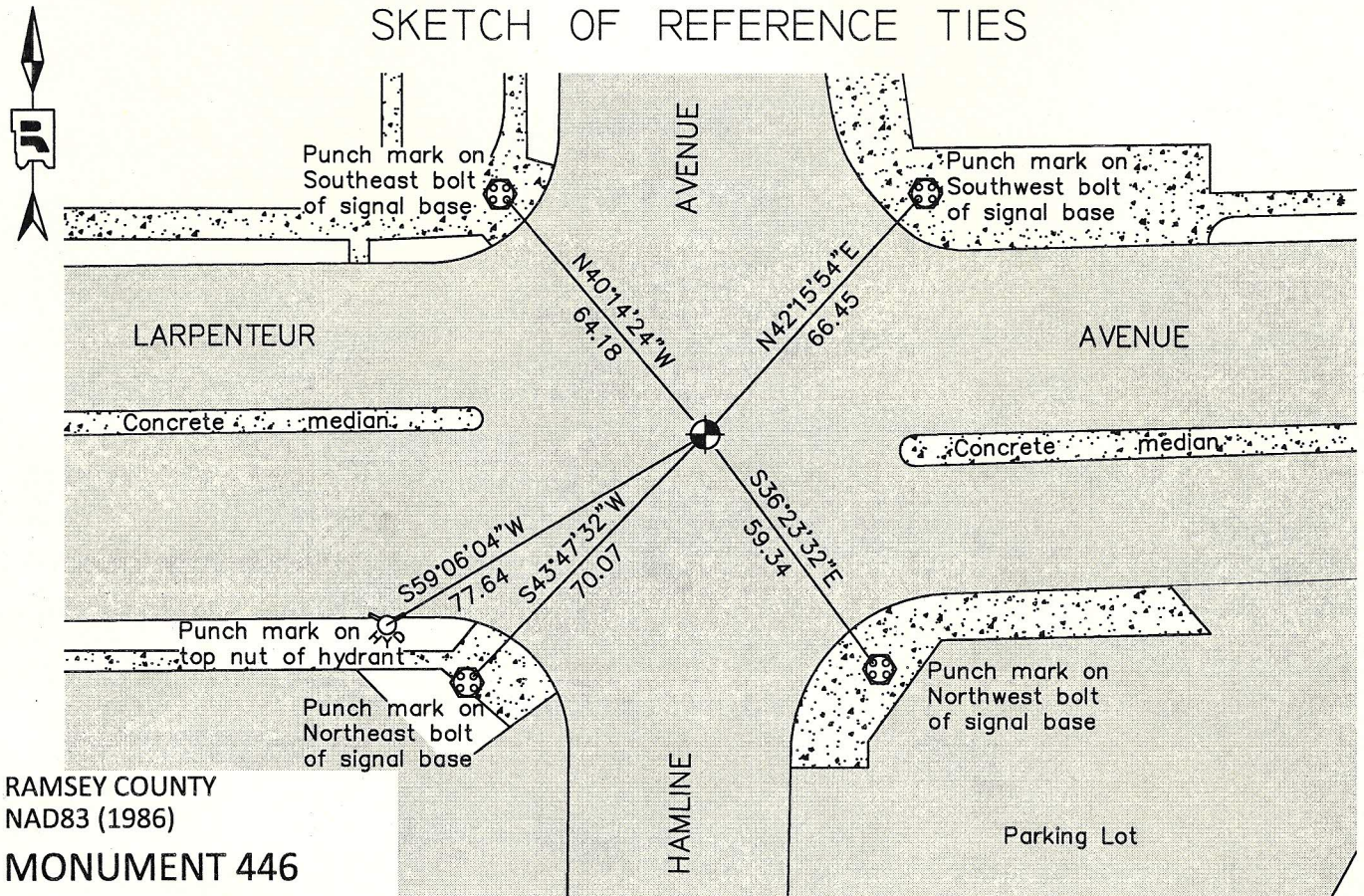
At the corner location shown on the sketch

On October 3, 2012 found a "Ramsey County" cast iron monument within a cast iron manhole assembly.

left monument as found     
  raised/lowered monument     
  removed monument (explain)

On \_\_\_\_\_ placed a \_\_\_\_\_

### SKETCH OF REFERENCE TIES



RAMSEY COUNTY  
NAD83 (1986)

### MONUMENT 446

X= 558674.417 (Easting)  
Y= 173270.858 (Northing)

ALL DISTANCES ARE SHOWN IN U.S. SURVEY FEET.  
BEARINGS ARE FOR TIE REFERENCE PURPOSES ONLY.

Statements of evidence relative to this corner are on the following page.

I hereby certify that this document was prepared by me or under my direct supervision and that I am a duly Licensed Land Surveyor under the laws of the State of Minnesota.

Daniel D. Baar      2-20-13  
Daniel D. Baar      Date  
Minnesota License No. 45816

- County Surveyor     
  Land Surveyor  
 Deputy County Surveyor

OFFICE OF COUNTY SURVEYOR  
County of Ramsey

I hereby certify that this document was filed in the County Surveyor's office this 20th day of February, 20 13.

Craig W. Hinzman  
Craig W. Hinzman, L.S.  
Ramsey County Surveyor



# MONUMENT 446

North Quarter Corner of Section 22, Township 29 North, Range 23 West

Set 1/4 Section post, Bur Oak 20 S23°E 2.53, November 3, 1847.

Monument set by J. H. Armstrong; tied, March, 1891. (City of Saint Paul Surveyor)

Tied granite monument at grade, January 1, 1934. (City of Saint Paul Surveyor)

Tied monument, December, 1939. (City of Saint Paul Surveyor)

Found a granite monument, June 18, 1976.

Checked monument, August 12, 1977.

Found granite monument at grade, in concrete pavement, March, 1991. (City of Saint Paul Surveyor)

Tied out granite monument for removal by construction, April 26, 2000.

Set a 20 in. cast iron monument, down 18 in.; Shafer Contracting to set P.V.C. pipe and cast iron manhole assembly, July, 2000.

Tied monument, down +/-18 in., March 28, 2001.

Retied monument, September 5, 2007.

Tied cast iron monument, December 3, 2009. (City of Saint Paul Surveyor)

Found "Ramsey County" cast iron monument in cast iron manhole assembly. Checked condition of ties, October 3, 2012.