

MONUMENT 407

CERTIFICATE OF LOCATION OF GOVERNMENT CORNER

Northeast Corner of Section 18, Township 29 North, Range 22 West, County of Ramsey, State of Minnesota.

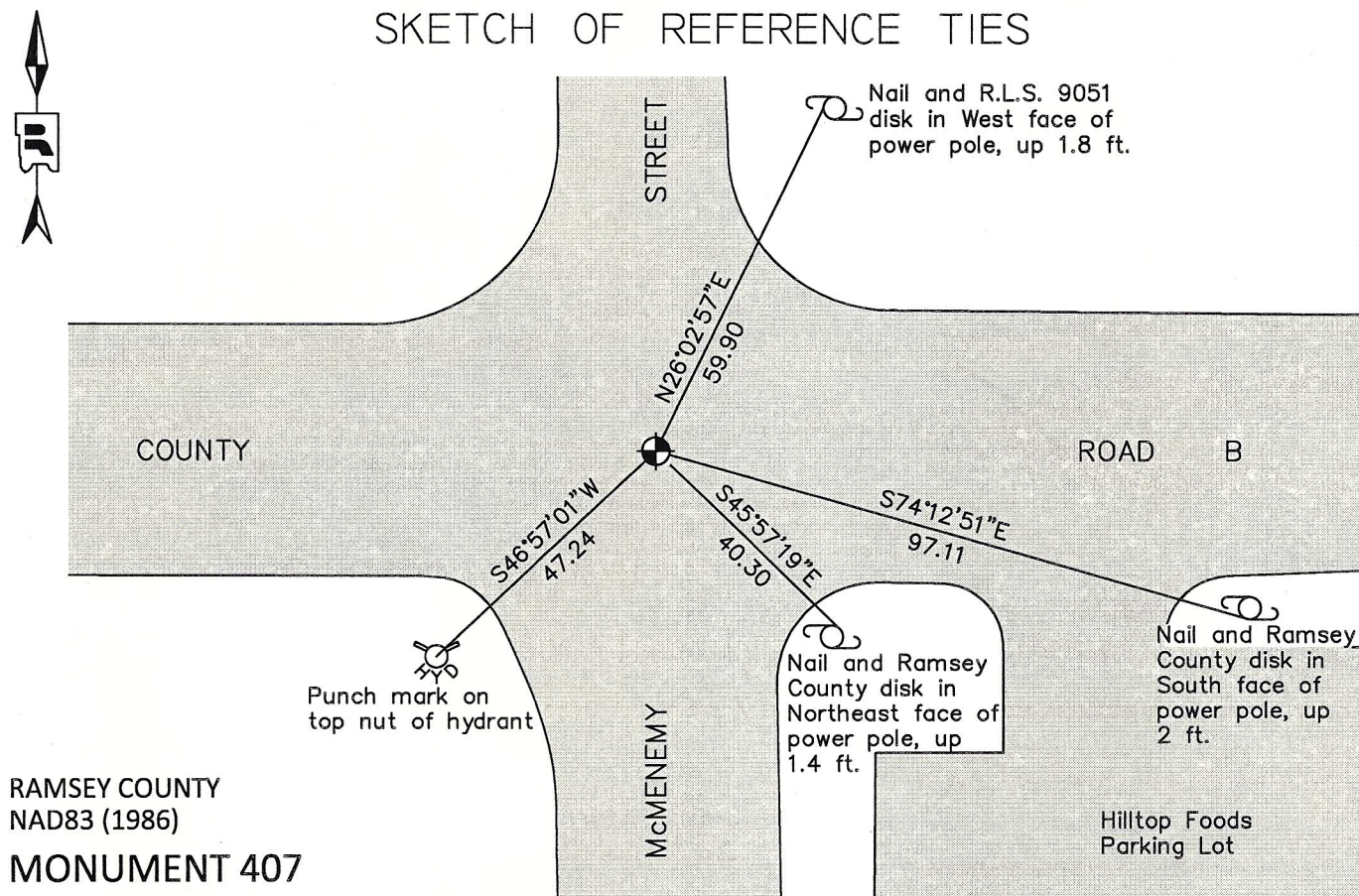
At the corner location shown on the sketch

On July 20, 2012 found a cast iron monument down 0.2 ft. in bituminous road.

left monument as found raised/lowered monument removed monument (explain)

On _____ placed a _____

SKETCH OF REFERENCE TIES



RAMSEY COUNTY
NAD83 (1986)

MONUMENT 407

X= 576776.191 (Easting)
Y= 178581.285 (Northing)

ALL DISTANCES ARE SHOWN IN U.S. SURVEY FEET.
BEARINGS ARE FOR TIE REFERENCE PURPOSES ONLY.

Statements of evidence relative to this corner are on the following page.

I hereby certify that this document was prepared by me or under my direct supervision and that I am a duly Licensed Land Surveyor under the laws of the State of Minnesota.

Daniel D. Baar 2-20-13
Daniel D. Baar Date
Minnesota License No. 45816

County Surveyor
 Deputy County Surveyor Land Surveyor

OFFICE OF COUNTY SURVEYOR
County of Ramsey

I hereby certify that this document was filed in the County Surveyor's office this 20th day of February, 20 13.

Craig W. Hinzman
Craig W. Hinzman, L.S.
Ramsey County Surveyor

MONUMENT 407

Northeast Corner of Section 18, Township 29 North, Range 22 West

Set post corner to Sections 7, 8, 17, & 18, Bur Oak 14 N63°E 1.01, W. Oak 16 S71°W 167, November 29, 1847.

The Northeast Corner of Section 18 was fixed by Gates A. Johnson Jr. from a Government witness stump, 1885.

Set monument, 1895.

Checked monument, May, 1939.

Retied granite monument, March 13, 1961.

Checked granite monument, May, 1970.

Found a granite monument flush and tied, September 18, 1974.

Maintenance Department to remove granite monument; tied, May 14, 1991.

Relocated position and set 4 P.K. nails, August 26, 1991.

Placed a 20 in. cast iron monument, 1991.

Tied monument, December 30, 2002.

Retied monument, August 9, 2007.

Checked cast iron monument and tie conditions, July 20, 2012.