

MONUMENT 377

CERTIFICATE OF LOCATION OF SECTION SUBDIVISION MONUMENT

Center of Section 10, Township 29 North, Range 23 West, County of Ramsey, State of Minnesota.

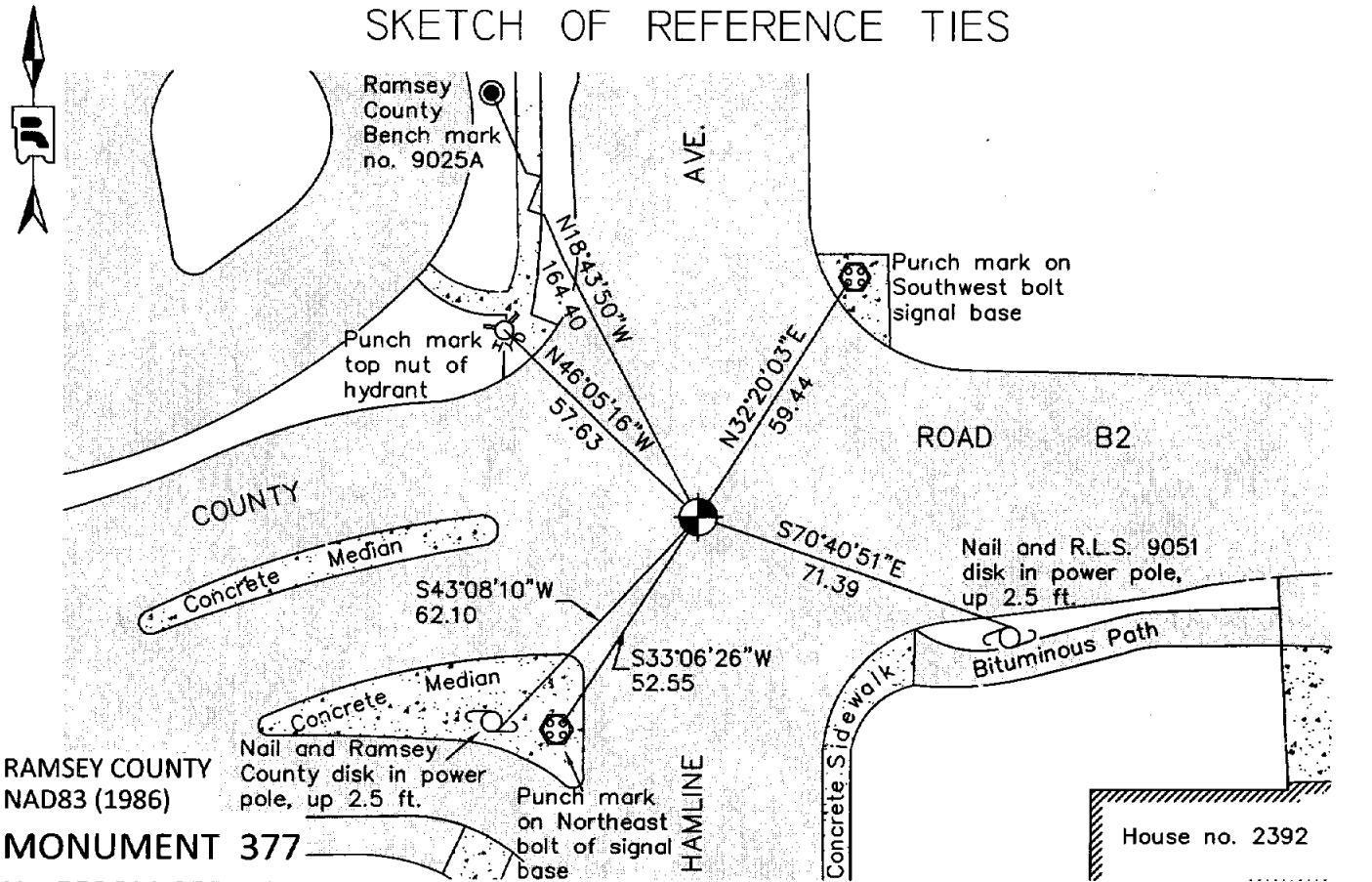
At the corner location shown on the sketch

On June 18, 2012 found a cast iron monument, flush.

left monument as found raised/lowered monument removed monument (explain)

On June 18, 2012 placed a 20 in. cast iron monument within cast iron manhole assembly.

SKETCH OF REFERENCE TIES



RAMSEY COUNTY
NAD83 (1986)

MONUMENT 377

X= 558611.355 (Easting)
Y= 181168.033 (Northing)

ALL DISTANCES ARE SHOWN IN U.S. SURVEY FEET.
BEARINGS ARE FOR TIE REFERENCE PURPOSES ONLY.

Statements of evidence relative to this corner are on the following page.

I hereby certify that this document was prepared by me or under my direct supervision and that I am a duly Licensed Land Surveyor under the laws of the State of Minnesota.

Daniel D. Baar 7-24-12
Daniel D. Baar Date
Minnesota License No. 45816

- County Surveyor Land Surveyor
 Deputy County Surveyor

OFFICE OF COUNTY SURVEYOR
County of Ramsey

I hereby certify that this document was filed in the County Surveyor's office this 24th day of July, 20 12.

Craig W. Hinzman
Craig W. Hinzman, L.S.
Ramsey County Surveyor

MONUMENT 377

Center of Section 10, Township 29 North, Range 23 West

Fixed the Center of Section 10 by Intersection, January 7, 1898.

Set monument, May 9, 1898.

Found cast iron monument flush and tied, July 23, 1974 (The origin of the cast iron monument has not been determined).

Checked monument, July 15, 1977.

Retied monument, August 10, 1990.

Monument destroyed by construction, 1993.

Set 20 in. cast iron monument, September 20, 1994.

Tied monument, July 31, 1998.

Retied monument, July 10, 2006.

Retied cast iron monument flush, July 6, 2011.

Tied monument for removal during road reconstruction, June 5, 2012.

Removed cast iron monument and set 20 in. cast iron monument within a cast iron manhole assembly, using construction ties; tied, June 18, 2012.