

# MONUMENT 332

## CERTIFICATE OF LOCATION OF GOVERNMENT CORNER

East Quarter Corner of Section 3, Township 29 North, Range 23 West, County of Ramsey, State of Minnesota.

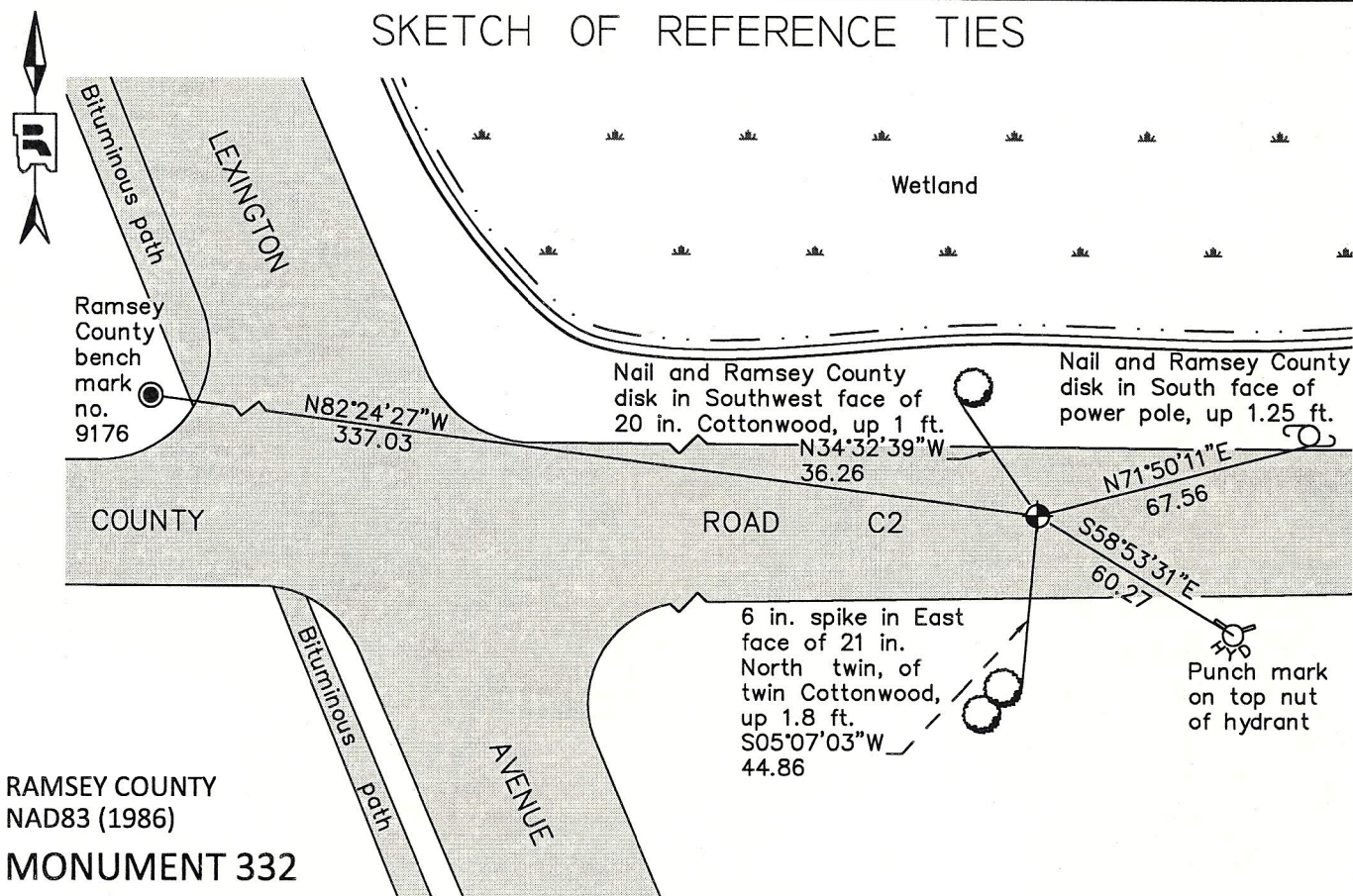
At the corner location shown on the sketch

On June 12, 2012 found a cast iron monument flush in bituminous road.

left monument as found       raised/lowered monument       removed monument (explain)

On \_\_\_\_\_ placed a \_\_\_\_\_

### SKETCH OF REFERENCE TIES



RAMSEY COUNTY  
NAD83 (1986)  
**MONUMENT 332**

X= 561163.565 (Easting)  
Y= 186434.570 (Northing)

ALL DISTANCES ARE SHOWN IN U.S. SURVEY FEET.  
BEARINGS ARE FOR TIE REFERENCE PURPOSES ONLY.

Statements of evidence relative to this corner are on the following page.

I hereby certify that this document was prepared by me or under my direct supervision and that I am a duly Licensed Land Surveyor under the laws of the State of Minnesota.

Daniel D. Baar      2-20-13  
Daniel D. Baar      Date  
Minnesota License No. 45816

- County Surveyor  
 Deputy County Surveyor       Land Surveyor

OFFICE OF COUNTY SURVEYOR  
County of Ramsey

I hereby certify that this document was filed in the County Surveyor's office this 20th day of February, 20 13.

Craig W. Hinzman  
Craig W. Hinzman, L.S.  
Ramsey County Surveyor

# MONUMENT 332

East Quarter Corner of Section 3, Township 29 North, Range 23 West

Set 1/4 Section post, W. Oak 18 S34-1/2°E 2.67, "Do" 10 S31-1/2°W 2.60, November 3, 1847.

The 1/4 Corner between Sections 2 and 3 was fixed by J.H. Armstrong, December, 1896.

Set monument, May, 1897.

Checked monument, October, 1944.

Found a granite monument down 0.89 ft. Set a 10 in. cast iron monument over granite monument, September 26, 1975.

Checked monument, April 17, 1977.

Monument destroyed by construction. Set a 20 in. cast iron monument, September, 1980.

Tied monument, June 5, 1981.

Retied monument, January 18, 1991.

Retied monument, July 17, 2002.

Monument in need of repair; removed loose bituminous from around the monument and placed concrete around the top of the monument in bituminous road surface, October 27, 2005.

Retied monument, August 24, 2007.

Checked condition of cast iron monument, flush in bituminous road, and ties, June 12, 2012.