

MONUMENT 196

CERTIFICATE OF LOCATION OF GOVERNMENT CORNER

East Quarter Corner of Section 22, Township 30 North, Range 22 West, County of Ramsey, State of Minnesota.

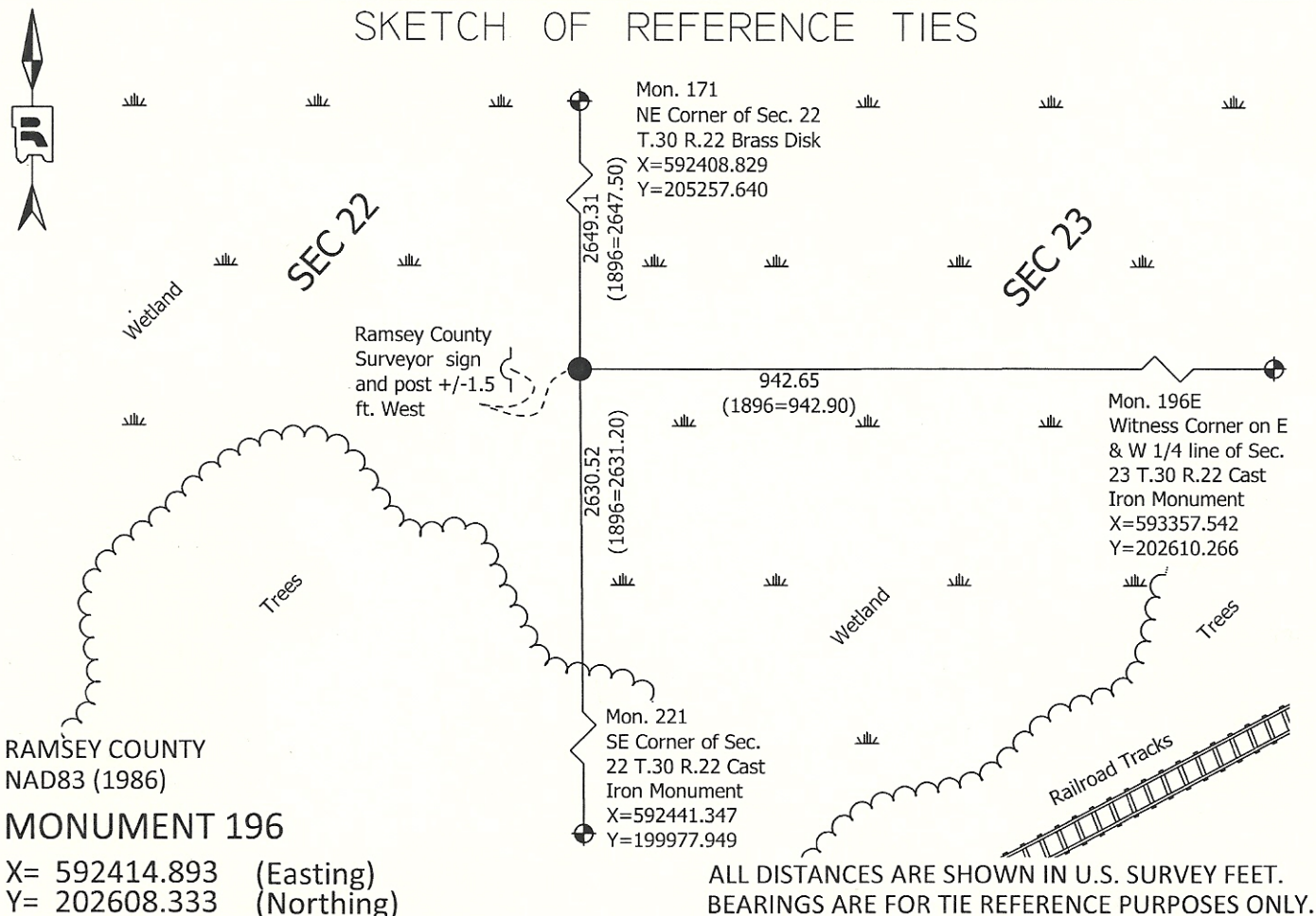
At the corner location shown on the sketch

On October 31, 2012 found a 2 in. x 22in. open iron pipe leaning.

left monument as found raised/lowered monument removed monument (explain)

On October 31, 2012 placed a 5 ft. x 7/8 in. diameter rebar, then replaced the 2 in. x 22 in. open iron pipe over rebar; set iron pipe flush in wetland.

SKETCH OF REFERENCE TIES



Statements of evidence relative to this corner are on the following page.

I hereby certify that this document was prepared by me or under my direct supervision and that I am a duly Licensed Land Surveyor under the laws of the State of Minnesota.

Daniel D. Baar 11-8-12
Daniel D. Baar Date
Minnesota License No. 45816

- County Surveyor Land Surveyor
 Deputy County Surveyor

OFFICE OF COUNTY SURVEYOR
County of Ramsey

I hereby certify that this document was filed in the County Surveyor's office this 8th day of November, 20 12.

Craig W. Hinzman
Craig W. Hinzman, L.S.
Ramsey County Surveyor

MONUMENT 196

East Quarter Corner of Section 22, Township 30 North, Range 22 West

Set 1/4 Section post, Tamarack 12 N73°W 27, "Do" (Tamarack) 14 S80°E 43, December 7, 1847.

Found old Tamarack stake at 1/4 Corner between Sections 22 and 23, found two Government witness stumps; retied it, October 6, 1896. Set monument.

Checked iron monument, February, 1948.

Found 2 in. rusted iron up +/-0.2 ft. and placed a sign and post, February 8, 1991.

Found 2 in. pipe flush, and sign and post tipped west, February 21, 2007.

Found 2 in. x 22 in. open iron pipe leaning Southwesterly, removed pipe and probed down +/-3 ft. within a 3 ft. radius of pipe, found nothing. Placed a 5 ft. x 7/8 in. rebar, then replaced 2 in. open iron pipe over the top of rebar; placed flush in wetland at straightened position, October 31, 2012.