

MONUMENT 646

CERTIFICATE OF LOCATION OF GOVERNMENT CORNER

North Quarter Corner of Section 12, Township 28 North, Range 22 West, County of Ramsey, State of Minnesota.

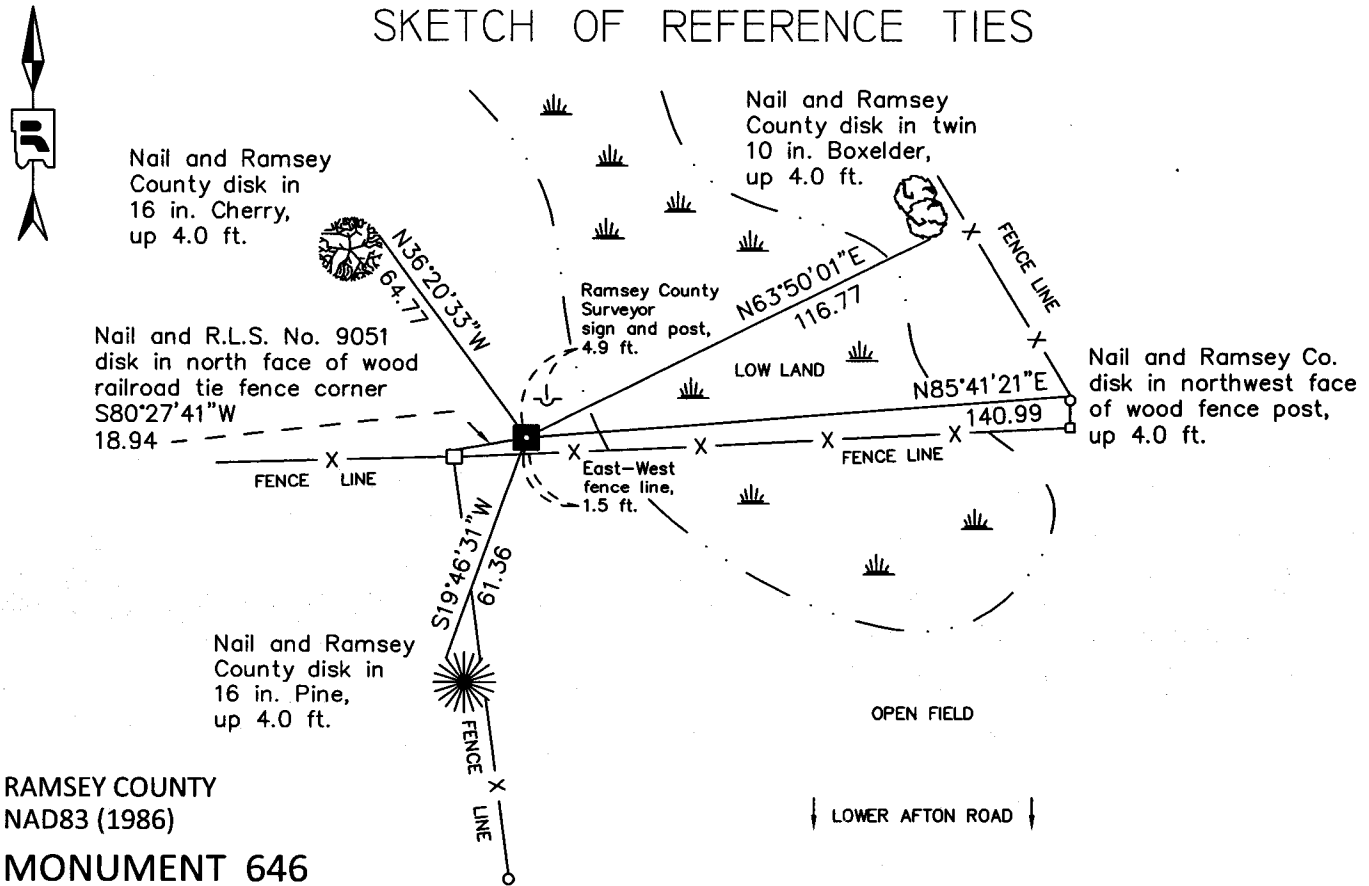
At the corner location shown on the sketch

On June 3, 2011 found a granite monument, up 0.75 ft.

left monument as found raised/lowered monument removed monument (explain)

On _____ placed a _____

SKETCH OF REFERENCE TIES



RAMSEY COUNTY
NAD83 (1986)
MONUMENT 646

X= 600663.107 (Easting)
Y= 152348.229 (Northing)

ALL DISTANCES ARE SHOWN IN U.S. SURVEY FEET.
BEARINGS ARE FOR TIE REFERENCE PURPOSES ONLY.

Statements of evidence relative to this corner are on the following page.

I hereby certify that this document was prepared by me or under my direct supervision and that I am a duly Licensed Land Surveyor under the laws of the State of Minnesota.

Daniel D. Baar 7-24-12
Daniel D. Baar Date
Minnesota License No. 45816

County Surveyor
 Deputy County Surveyor Land Surveyor

OFFICE OF COUNTY SURVEYOR
County of Ramsey

I hereby certify that this document was filed in the County Surveyor's office this 24th day of July, 2012.

Craig W. Hinzman
Craig W. Hinzman, L.S.
Ramsey County Surveyor

MONUMENT 646

North Quarter Corner of Section 12, Township 28 North, Range 22 West

Set 1/4 Section Corner, Black Oak 14 N35°W 63; Bur Oak 14 S21°E 67,
October 24, 1847.

In establishing the 1/4 Corner between Sections 1 and 12, found old stake,
Government trees gone, fixed Corner and tied it, June 30, 1897; set monument,
August 12, 1897.

Found granite monument flush and tied, August 2, 1974.

Checked monument, September 22, 1988.

Retied granite monument, up 1 ft.; set sign and post 5.2 ft. northeast of granite
monument, August 28, 1996.

Retied monument, October 6, 2006.

Retied granite monument, up 0.75 ft., June 3, 2011.