

MONUMENT 438

CERTIFICATE OF LOCATION OF GOVERNMENT CORNER

East Quarter Corner of Section 14, Township 29 North, Range 22 West, County of Ramsey, State of Minnesota.

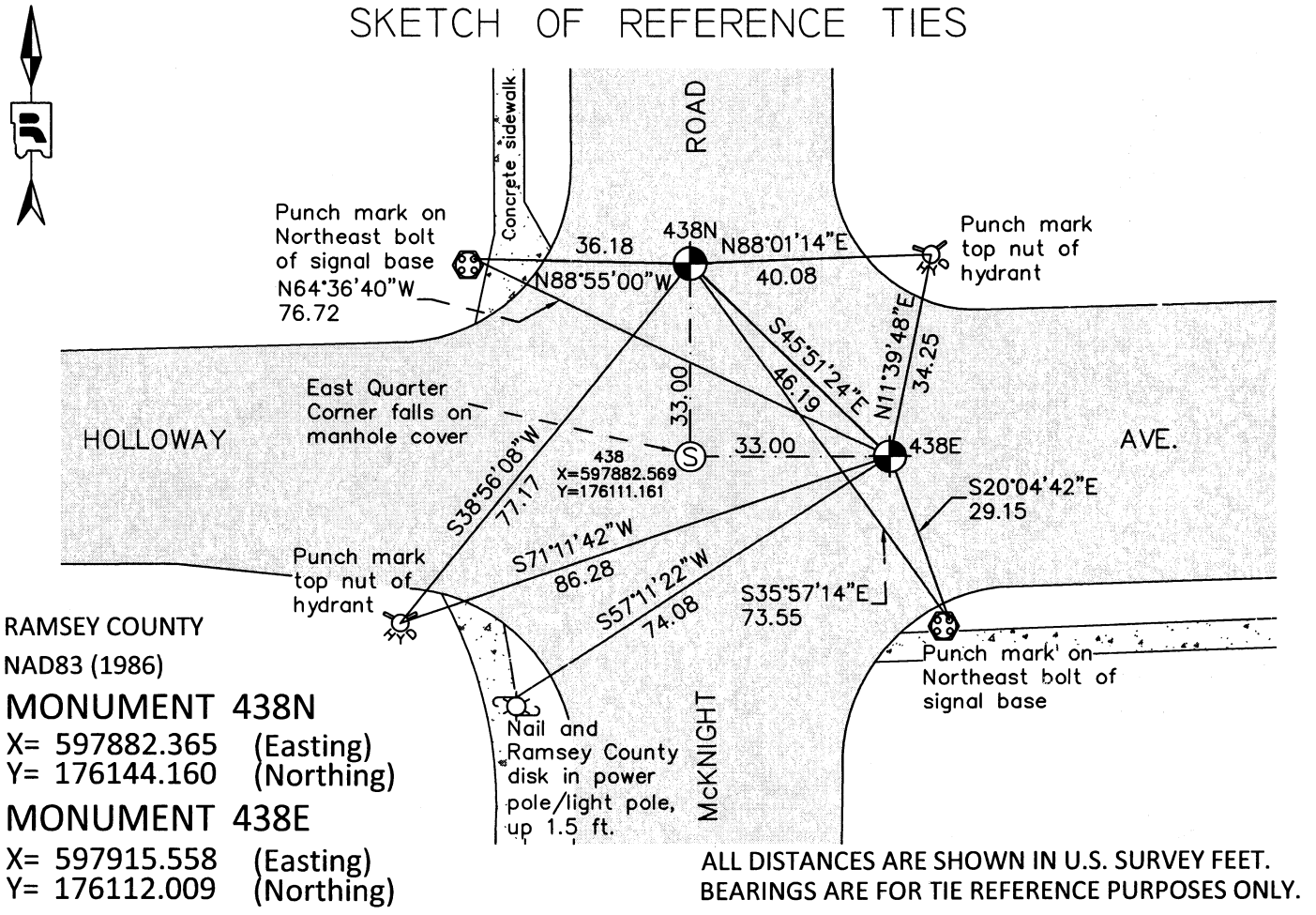
At the corner location shown on the sketch

On June 9, 2011 found a cast iron monument within a cast iron manhole assembly.

left monument as found raised/lowered monument removed monument (explain)

On _____ placed a _____

SKETCH OF REFERENCE TIES



Statements of evidence relative to this corner are on the following page.

I hereby certify that this document was prepared by me or under my direct supervision and that I am a duly Licensed Land Surveyor under the laws of the State of Minnesota.

Daniel D. Baar 9-6-12
Daniel D. Baar Date
Minnesota License No. 45816

- County Surveyor
 Deputy County Surveyor Land Surveyor

OFFICE OF COUNTY SURVEYOR
County of Ramsey

I hereby certify that this document was filed in the County Surveyor's office this 5th day of September, 20 12.

Craig W. Hinzman
Craig W. Hinzman, L.S.
Ramsey County Surveyor

MONUMENT 438

East Quarter Corner of Section 14, Township 29 North, Range 22 West

Set 1/4 Section post, Bur Oak 10 S8°W 84, Bur Oak 26 N87°E 175,
November 29, 1847.

In Establishing the 1/4 Corner between Sections 13 and 14, found old stake at 1/4
Corner, which was fixed when old Government trees were standing. Fixed Corner and
set Monument August, 1900.

Tied a R.R. spike by manhole, February, 1967.

Found a manhole at center of street and broken off Reference Monument
southwesterly; Reference Monuments northeasterly and southeasterly missing,
September 16, 1974.

Found a cast iron Witness Corner monument 33 ft. North and placed a cast iron
Witness Corner 33 ft. East of true position of the Quarter Corner. Witness Corner
monuments are on line, November 15, 1974, (True position of 1/4 Section Corner
matches tie taken to the Southeast Corner of house no. 2255 in February, 1967).

Replaced East Witness Monument after construction, no date was given in the field
book.

Tied monuments, July 12, 1984.

Checked monuments, July 16, 1984.

Monuments destroyed during McKnight Road reconstruction, 1988.

Placed P.K. for East Witness, 1989.

Tied out P.K., August 3, 1990.

Set a 20 in. cast iron monument at East Witness monument position,
August 16, 1990.

Set a 20 in. cast iron monument at North Witness Monument position, 1993.

Tied monuments, April 2, 2001.

MONUMENT 438

East Quarter Corner of Section 14, Township 29 North, Range 22 West

Lowered North Witness monument 12 in. below grade for road milling project; set tube, July 22, 2003.

Set a cast iron manhole assembly over North Witness monument, August 19, 2003.

Set a cast iron manhole assembly over East Witness monument, August 20, 2004

Tied monuments, August 2, 2006.

Retied North and East Witness cast iron monuments within cast iron manhole assemblies, June 9, 2011.